

Washoe County Sheriff's Office

CAB Data

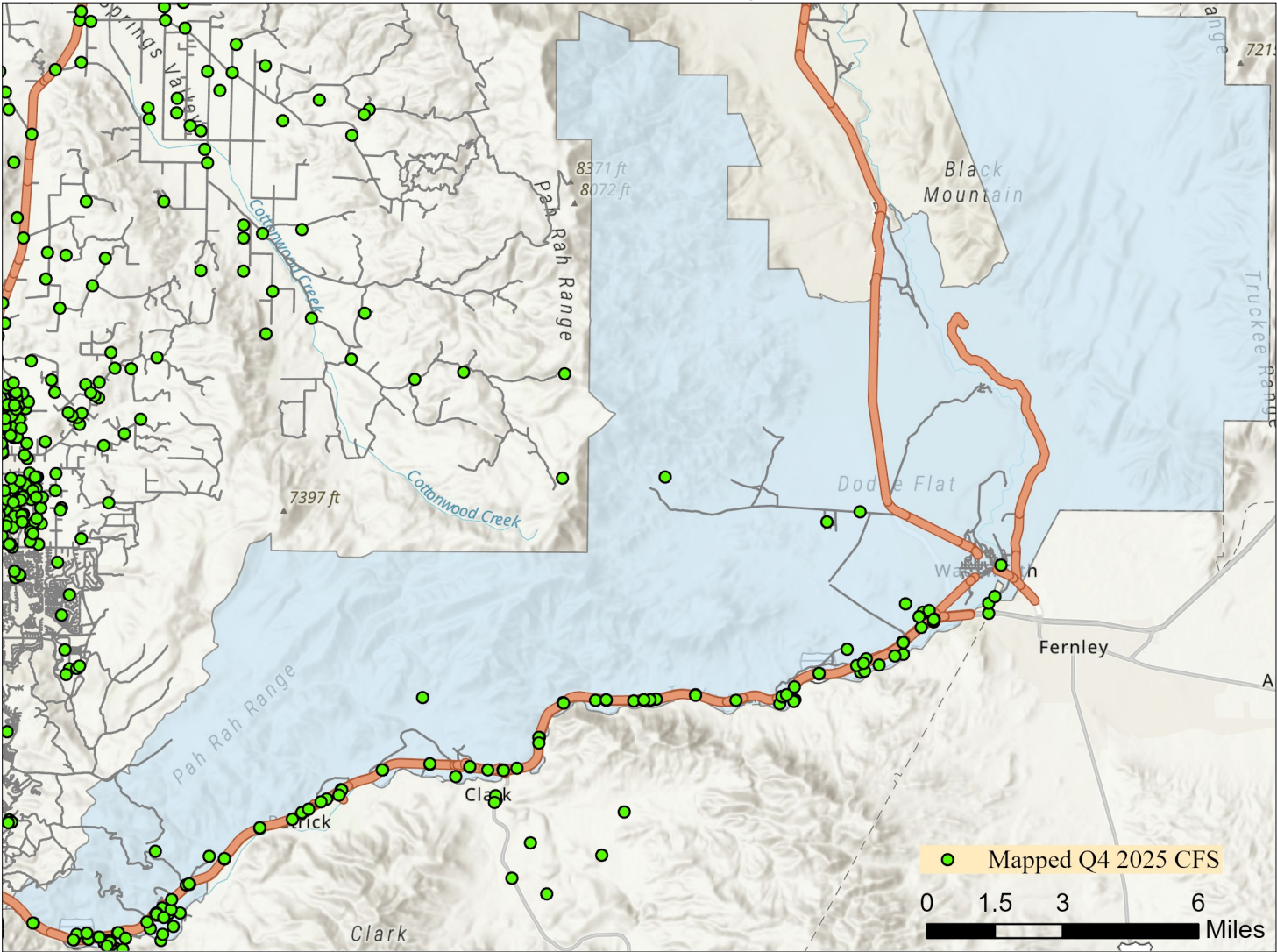
Quarter 4 2025



Note: Calls for service (CFS) and case data reflect WCSO jurisdictions. CFS and cases are mapped with useable coordinates only.

Published: 1/27/2026

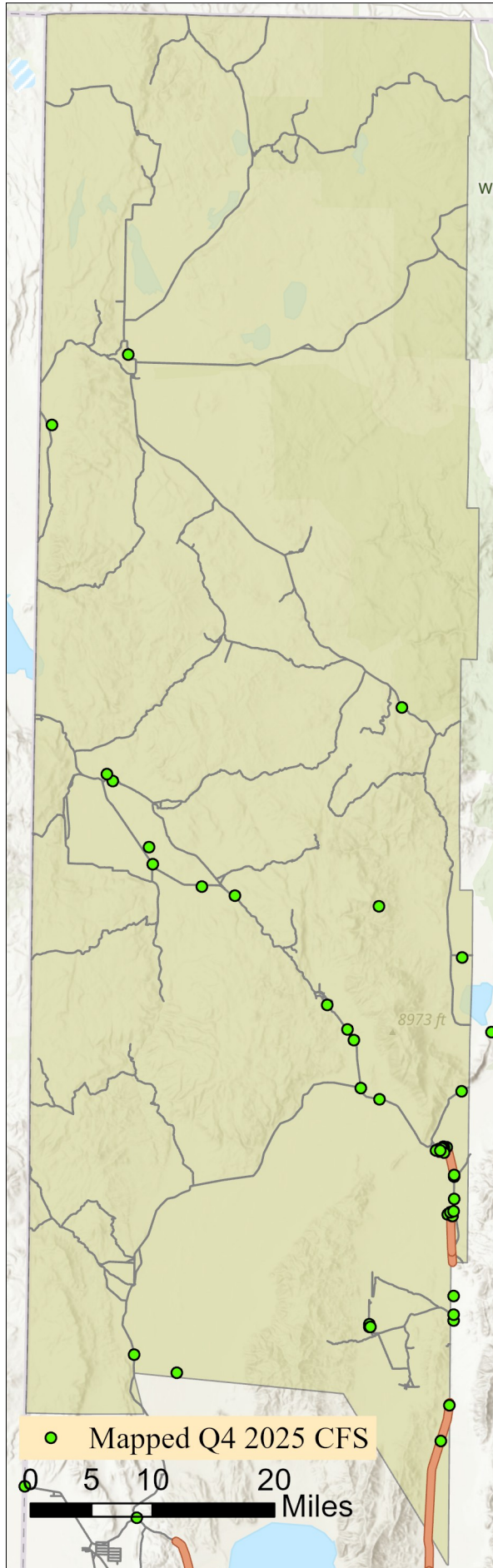
East Truckee Canyon CAB



Offense Categories	Q4	3yr Avg	Up/Down	Offense Categories	Q4	3yr Avg	Up/Down
All Other Offenses	0	1	↓	Homicide Offenses	0	0	●
Animal Cruelty	0	0	●	Human Trafficking Offenses	0	0	●
Arson	0	0	●	Kidnapping/Abduction	0	0	●
Assault Offenses	0	0	●	Larceny/Theft Offenses	1	2	↓
Bad Checks	0	0	●	Liquor Law Violations	0	0	●
Bribery	0	0	●	Motor Vehicle Theft	1	0	↑
Burglary	3	0	↑	Peeping Tom	0	0	●
Counterfeiting/Forgery	0	0	●	Pornography/Obscene Material	0	0	●
Curfew/Loitering/Vagrancy	0	0	●	Prostitution Offenses	0	0	●
Destruction/Damage/Vandalism	2	1	↑	Robbery	0	0	●
Disorderly Conduct	0	0	●	Sex Offenses	0	0	●
Driving Under the Influence	0	0	●	Sex Offenses, Nonforcible	0	0	●
Drug Equipment Violations	1	0	↑	Stolen Property Offenses	0	0	●
Drug/Narcotic Violations	1	2	↓	Trespass of Real Property	0	0	●
Drunkenness	0	0	●	Weapon Law Violations	0	1	↓
Embezzlement	0	0	●	CFS Status	Q4	3yr Avg	Up/Down
Extortion/Blackmail	0	0	●	Dispatched	65	48	↑
Family Offenses (Nonviolent)	0	0	●	Initiated	92	381	↓
Fraud Offenses	2	1	↑	Unspecified	474	201	↑
Gambling Offenses	0	0	●	Total	631	631	●

Note: Initiated CFS are defined by whether the created date and time listed in the CFS match the on scene date and time entered by dispatch. Additionally, follow up and assignment CFS types are included in this category. Dispatched CFS are defined by whether an on scene time is listed in the CFS, and the CFS is not initially defined as initiated. Unspecified CFS include CFS with no on scene date and time information.

Gerlach/Empire CAB

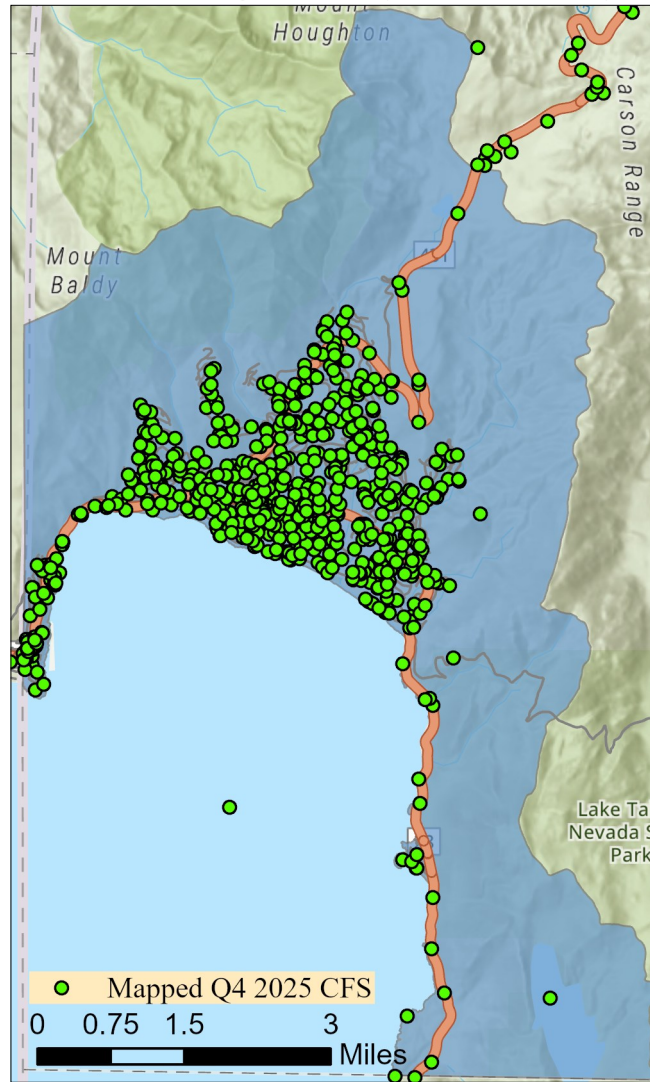


Offense Categories	Q4	3yr Avg	Up/Down
All Other Offenses	0	0	●
Animal Cruelty	0	0	●
Arson	0	0	●
Assault Offenses	1	1	●
Bad Checks	0	0	●
Bribery	0	0	●
Burglary	0	0	●
Counterfeiting/Forgery	0	0	●
Curfew/Loitering/Vagrancy	0	0	●
Destruction/Damage/Vandalism	0	0	●
Disorderly Conduct	1	0	↑
Driving Under the Influence	0	0	●
Drug Equipment Violations	0	0	●
Drug/Narcotic Violations	0	0	●
Drunkenness	0	0	●
Embezzlement	0	0	●
Extortion/Blackmail	0	0	●
Family Offenses (Nonviolent)	0	0	●
Fraud Offenses	0	0	●
Gambling Offenses	0	0	●

Offense Categories	Q4	3yr Avg	Up/Down
Homicide Offenses	0	0	●
Human Trafficking Offenses	0	0	●
Kidnapping/Abduction	0	0	●
Larceny/Theft Offenses	0	1	↓
Liquor Law Violations	0	0	●
Motor Vehicle Theft	0	0	●
Peeping Tom	0	0	●
Pornography/Obscene Material	0	0	●
Prostitution Offenses	0	0	●
Robbery	0	0	●
Sex Offenses	0	0	●
Sex Offenses, Nonforcible	0	0	●
Stolen Property Offenses	0	0	●
Trespass of Real Property	0	0	●
Weapon Law Violations	0	0	●
CFS Status	Q4	3yr Avg	Up/Down
Dispatched	22	20	↑
Initiated	43	167	↓
Unspecified	17	31	↓
Total	82	219	↓

Note: Initiated CFS are defined by whether the created date and time listed in the CFS match the on scene date and time entered by dispatch. Additionally, follow up and assignment CFS types are included in this category. Dispatched CFS are defined by whether an on scene time is listed in the CFS, and the CFS is not initially defined as initiated. Unspecified CFS include CFS with no on scene date and time information.

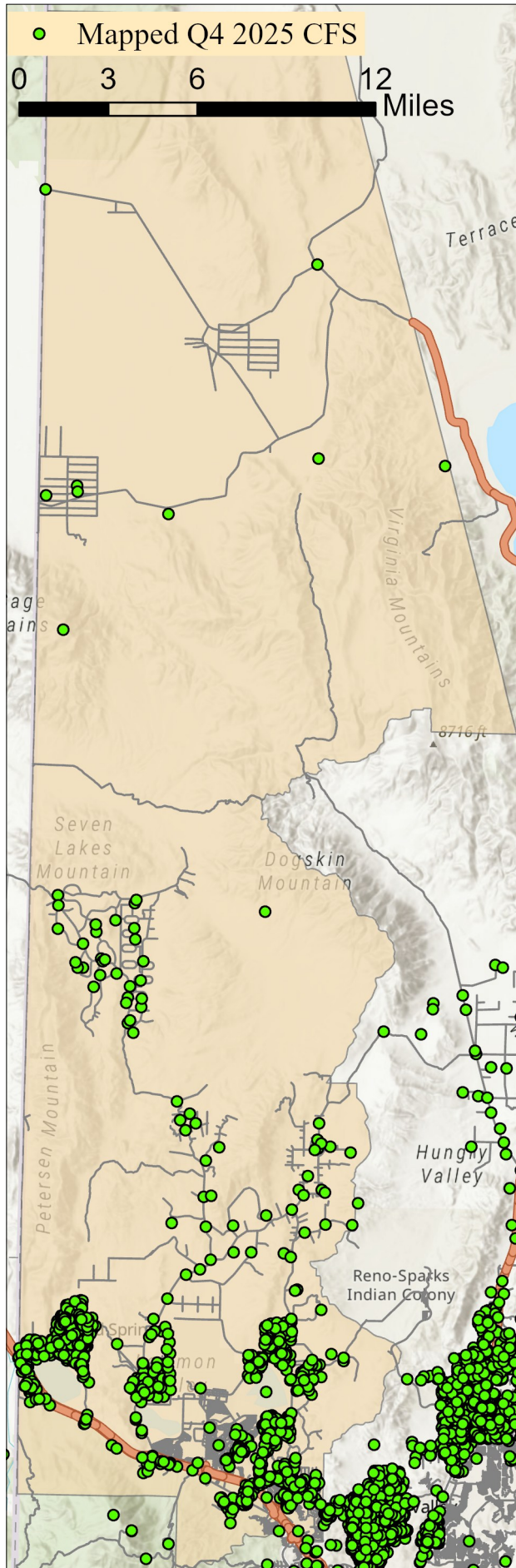
Incline Village/Crystal Bay CAB



Offense Categories	Q4	3yr Avg	Up/Down	Offense Categories	Q4	3yr Avg	Up/Down
All Other Offenses	15	8	↑	Homicide Offenses	0	0	●
Animal Cruelty	0	0	●	Human Trafficking Offenses	0	0	●
Arson	1	0	↑	Kidnapping/Abduction	1	0	↑
Assault Offenses	9	14	↓	Larceny/Theft Offenses	8	10	↓
Bad Checks	0	0	●	Liquor Law Violations	0	1	↓
Bribery	0	0	●	Motor Vehicle Theft	1	1	●
Burglary	1	2	↓	Peeping Tom	0	0	●
Counterfeiting/Forgery	0	2	↓	Pornography/Obscene Material	1	1	●
Curfew/Loitering/Vagrancy	0	0	●	Prostitution Offenses	0	0	●
Destruction/Damage/Vandalism	5	6	↓	Robbery	0	0	●
Disorderly Conduct	0	0	●	Sex Offenses	0	2	↓
Driving Under the Influence	3	3	●	Sex Offenses, Nonforcible	0	0	●
Drug Equipment Violations	4	3	↑	Stolen Property Offenses	1	1	●
Drug/Narcotic Violations	3	2	↑	Trespass of Real Property	2	2	●
Drunkenness	0	0	●	Weapon Law Violations	0	0	●
Embezzlement	0	2	↓	CFS Status	Q4	3yr Avg	Up/Down
Extortion/Blackmail	2	1	↑	Dispatched	455	513	↓
Family Offenses (Nonviolent)	4	0	↑	Initiated	2,297	1,958	↑
Fraud Offenses	9	12	↓	Unspecified	435	558	↓
Gambling Offenses	0	0	●	Total	3,187	3,029	↑

Note: Initiated CFS are defined by whether the created date and time listed in the CFS match the on scene date and time entered by dispatch. Additionally, follow up and assignment CFS types are included in this category. Dispatched CFS are defined by whether an on scene time is listed in the CFS, and the CFS is not initially defined as initiated. Unspecified CFS include CFS with no on scene date and time information.

North Valleys CAB

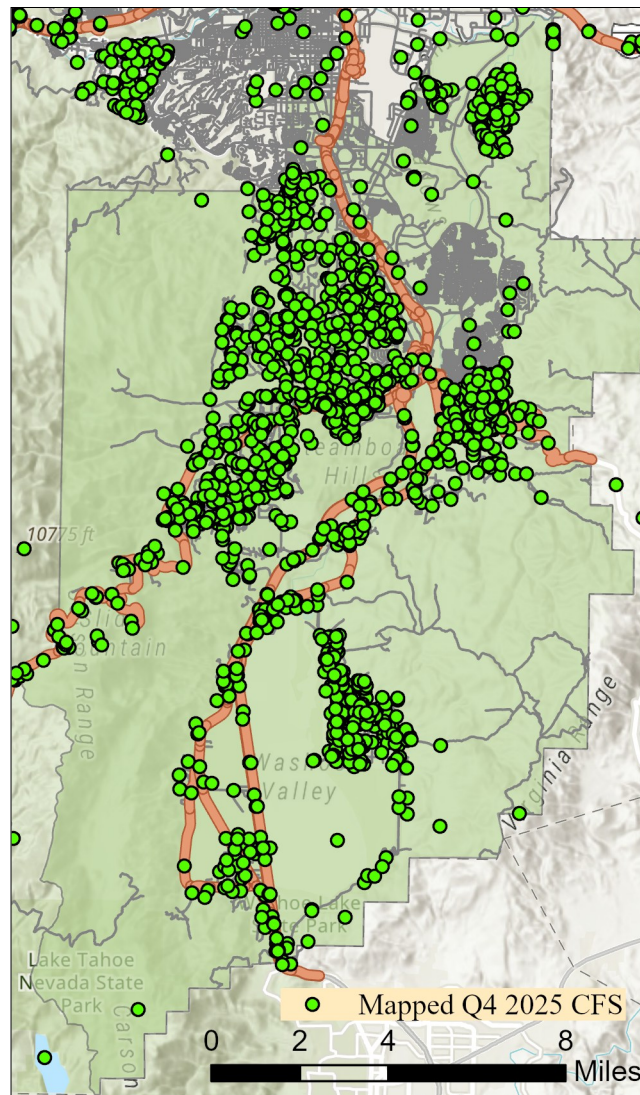


Offense Categories	Q4	3yr Avg	Up/Down
All Other Offenses	38	41	↓
Animal Cruelty	2	0	↑
Arson	0	1	↓
Assault Offenses	45	42	↑
Bad Checks	0	0	●
Bribery	1	0	↑
Burglary	3	5	↓
Counterfeiting/Forgery	0	2	↓
Curfew/Loitering/Vagrancy	0	0	●
Destruction/Damage/Vandalism	18	17	↑
Disorderly Conduct	3	4	↓
Driving Under the Influence	10	14	↓
Drug Equipment Violations	8	8	●
Drug/Narcotic Violations	9	13	↓
Drunkenness	0	0	●
Embezzlement	0	0	●
Extortion/Blackmail	5	1	↑
Family Offenses (Nonviolent)	6	6	●
Fraud Offenses	14	24	↓
Gambling Offenses	0	0	●

Offense Categories	Q4	3yr Avg	Up/Down
Homicide Offenses	0	0	●
Human Trafficking Offenses	0	0	●
Kidnapping/Abduction	0	3	↓
Larceny/Theft Offenses	27	23	↑
Liquor Law Violations	3	1	↑
Motor Vehicle Theft	4	4	●
Peeping Tom	0	0	●
Pornography/Obscene Material	1	1	●
Prostitution Offenses	0	0	●
Robbery	1	1	●
Sex Offenses	3	6	↓
Sex Offenses, Nonforcible	0	0	●
Stolen Property Offenses	4	4	●
Trespass of Real Property	6	5	↑
Weapon Law Violations	9	6	↑
CFS Status	Q4	3yr Avg	Up/Down
Dispatched	691	675	↑
Initiated	1,081	871	↑
Unspecified	966	790	↑
Total	2,738	2,335	↑

Note: Initiated CFS are defined by whether the created date and time listed in the CFS match the on scene date and time entered by dispatch. Additionally, follow up and assignment CFS types are included in this category. Dispatched CFS are defined by whether an on scene time is listed in the CFS, and the CFS is not initially defined as initiated. Unspecified CFS include CFS with no on scene date and time information.

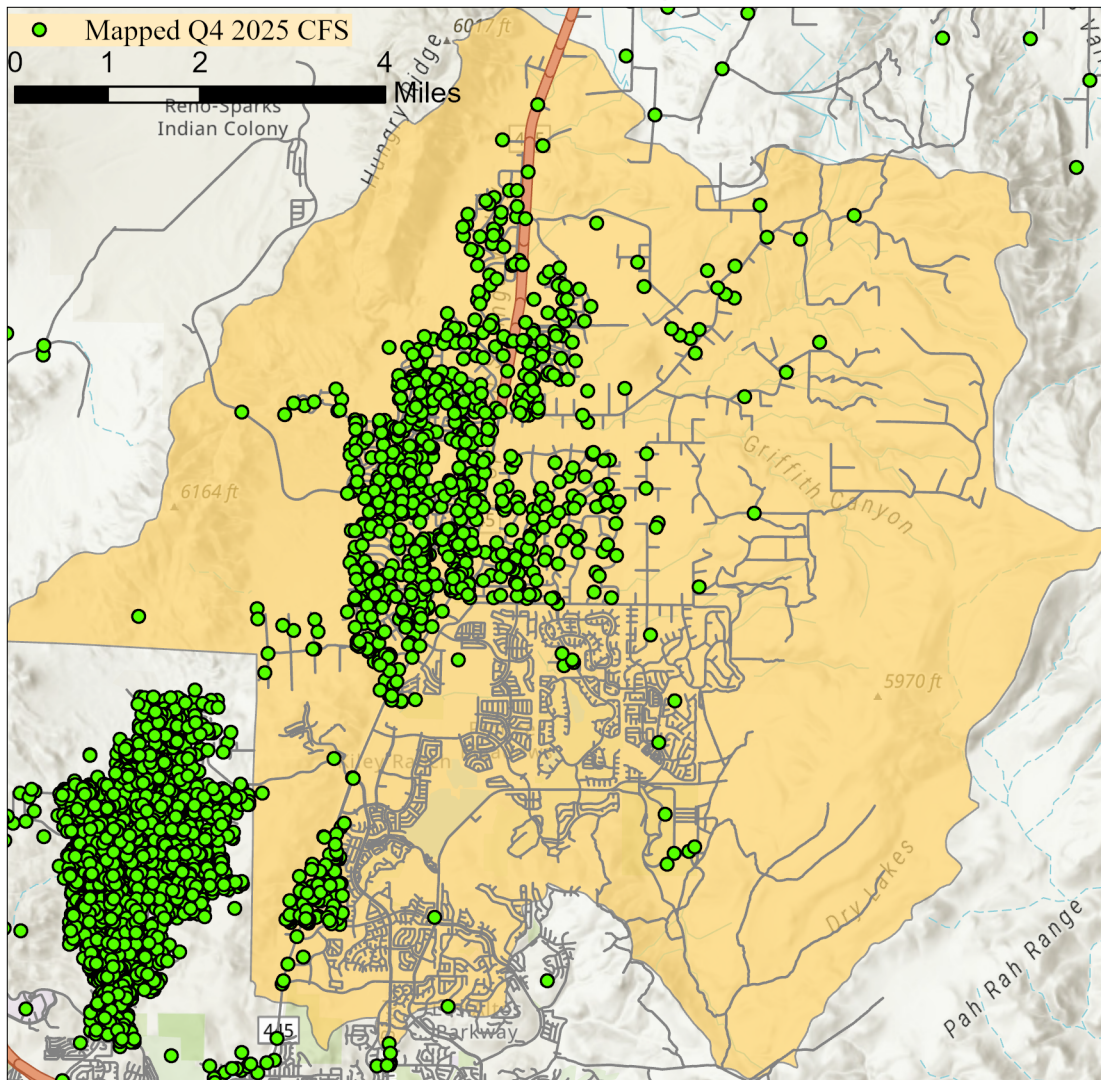
South Truckee Meadows/Washoe Valley CAB



Offense Categories	Q4	3yr Avg	Up/Down	Offense Categories	Q4	3yr Avg	Up/Down
All Other Offenses	25	28	↓	Homicide Offenses	0	0	●
Animal Cruelty	1	0	↑	Human Trafficking Offenses	0	0	●
Arson	0	0	●	Kidnapping/Abduction	0	0	●
Assault Offenses	22	23	↓	Larceny/Theft Offenses	32	28	↑
Bad Checks	0	0	●	Liquor Law Violations	0	0	●
Bribery	0	0	●	Motor Vehicle Theft	1	3	↓
Burglary	14	10	↑	Peeping Tom	0	0	●
Counterfeiting/Forgery	1	2	↓	Pornography/Obscene Material	1	1	●
Curfew/Loitering/Vagrancy	1	0	↑	Prostitution Offenses	0	0	●
Destruction/Damage/Vandalism	18	23	↓	Robbery	0	0	●
Disorderly Conduct	1	2	↓	Sex Offenses	3	4	↓
Driving Under the Influence	12	8	↑	Sex Offenses, Nonforcible	0	0	●
Drug Equipment Violations	3	7	↓	Stolen Property Offenses	0	4	↓
Drug/Narcotic Violations	4	8	↓	Trespass of Real Property	3	4	↓
Drunkenness	0	0	●	Weapon Law Violations	2	4	↓
Embezzlement	0	0	●	CFS Status	Q4	3yr Avg	Up/Down
Extortion/Blackmail	0	2	↓	Dispatched	692	675	↑
Family Offenses (Nonviolent)	4	3	↑	Initiated	1,352	926	↑
Fraud Offenses	24	28	↓	Unspecified	1,534	1,137	↑
Gambling Offenses	0	0	●	Total	3,578	2,738	↑

Note: Initiated CFS are defined by whether the created date and time listed in the CFS match the on scene date and time entered by dispatch. Additionally, follow up and assignment CFS types are included in this category. Dispatched CFS are defined by whether an on scene time is listed in the CFS, and the CFS is not initially defined as initiated. Unspecified CFS include CFS with no on scene date and time information.

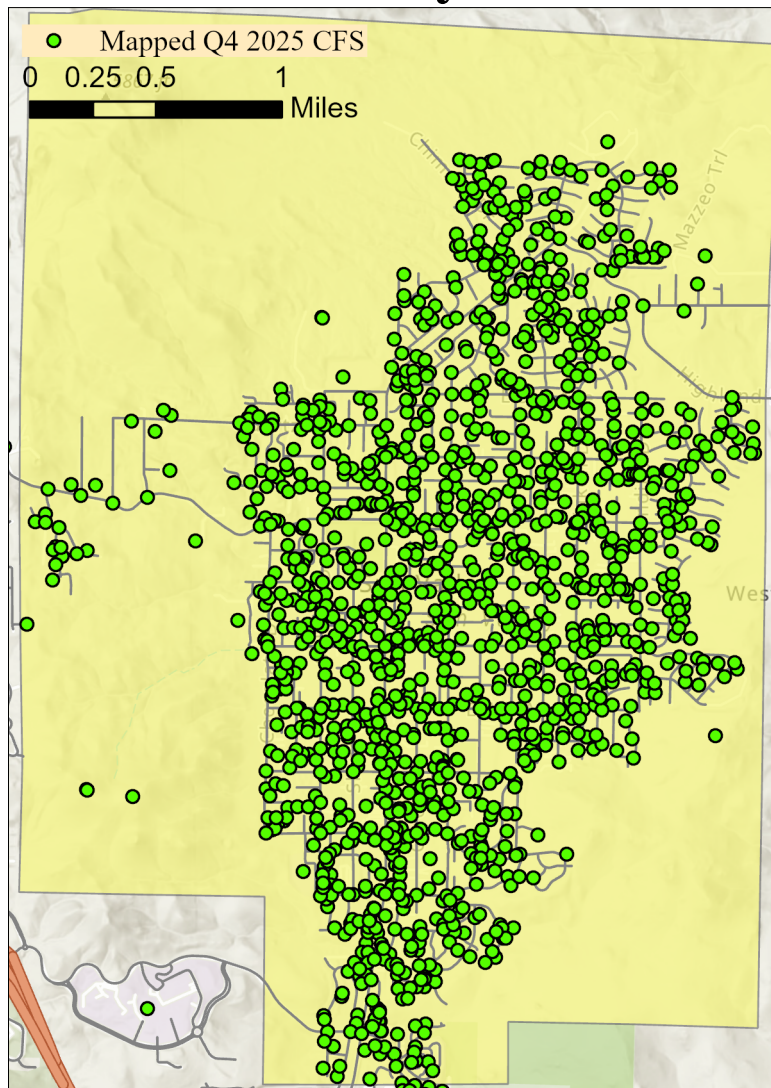
Spanish Springs CAB



Offense Categories	Q4	3yr Avg	Up/Down	Offense Categories	Q4	3yr Avg	Up/Down
All Other Offenses	28	20	↑	Homicide Offenses	0	0	●
Animal Cruelty	0	0	●	Human Trafficking Offenses	0	0	●
Arson	2	0	↑	Kidnapping/Abduction	0	2	↓
Assault Offenses	29	23	↑	Larceny/Theft Offenses	16	12	↑
Bad Checks	0	0	●	Liquor Law Violations	2	1	↑
Bribery	1	0	↑	Motor Vehicle Theft	2	3	↓
Burglary	3	3	●	Peeping Tom	1	0	↑
Counterfeiting/Forgery	0	1	↓	Pornography/Obscene Material	1	0	↑
Curfew/Loitering/Vagrancy	0	0	●	Prostitution Offenses	0	0	●
Destruction/Damage/Vandalism	14	15	↓	Robbery	0	1	↓
Disorderly Conduct	6	1	↑	Sex Offenses	7	5	↑
Driving Under the Influence	11	3	↑	Sex Offenses, Nonforcible	0	0	●
Drug Equipment Violations	2	2	●	Stolen Property Offenses	4	3	↑
Drug/Narcotic Violations	2	2	●	Trespass of Real Property	2	3	↓
Drunkenness	0	0	●	Weapon Law Violations	7	1	↑
Embezzlement	0	1	↓	CFS Status	Q4	3yr Avg	Up/Down
Extortion/Blackmail	2	1	↑	Dispatched	498	420	↑
Family Offenses (Nonviolent)	0	4	↓	Initiated	838	509	↑
Fraud Offenses	17	23	↓	Unspecified	849	655	↑
Gambling Offenses	0	0	●	Total	2,185	1,584	↑

Note: Initiated CFS are defined by whether the created date and time listed in the CFS match the on scene date and time entered by dispatch. Additionally, follow up and assignment CFS types are included in this category. Dispatched CFS are defined by whether an on scene time is listed in the CFS, and the CFS is not initially defined as initiated. Unspecified CFS include CFS with no on scene date and time information.

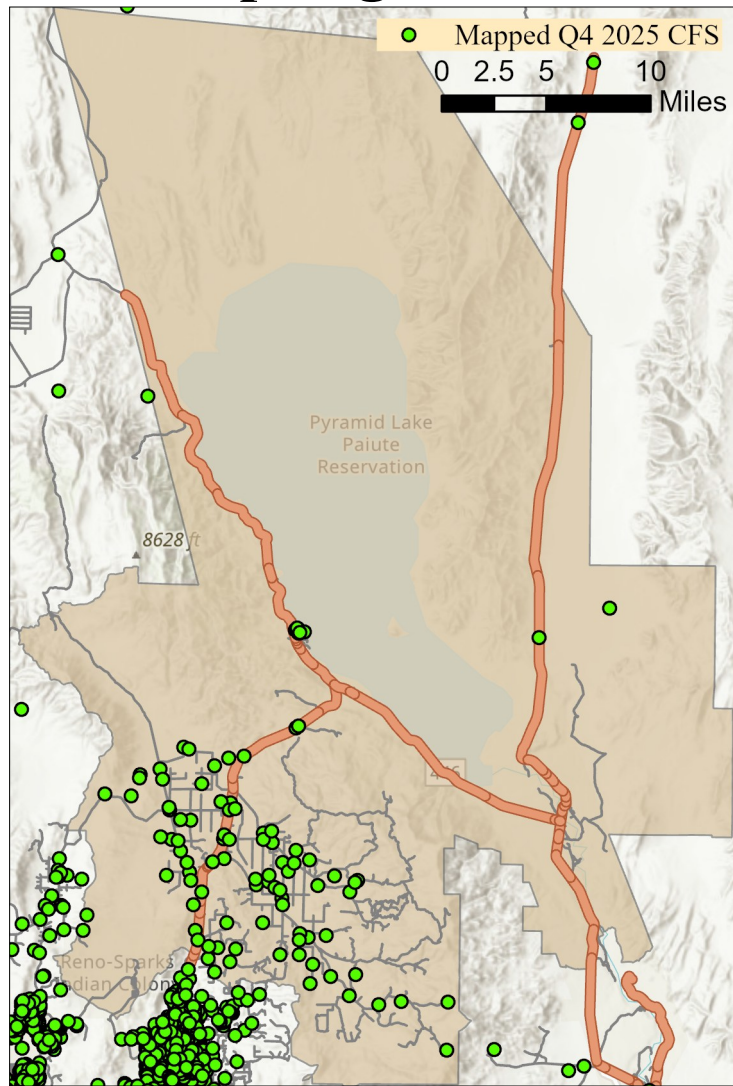
Sun Valley CAB



Offense Categories	Q4	3yr Avg	Up/Down	Offense Categories	Q4	3yr Avg	Up/Down
All Other Offenses	83	88	↓	Homicide Offenses	0	0	●
Animal Cruelty	1	1	●	Human Trafficking Offenses	0	1	↓
Arson	2	1	↑	Kidnapping/Abduction	2	2	●
Assault Offenses	63	55	↑	Larceny/Theft Offenses	33	27	↑
Bad Checks	0	0	●	Liquor Law Violations	0	2	↓
Bribery	0	0	●	Motor Vehicle Theft	6	10	↓
Burglary	11	9	↑	Peeping Tom	0	0	●
Counterfeiting/Forgery	0	3	↓	Pornography/Obscene Material	0	1	↓
Curfew/Loitering/Vagrancy	0	1	↓	Prostitution Offenses	0	0	●
Destruction/Damage/Vandalism	25	27	↓	Robbery	3	1	↑
Disorderly Conduct	3	3	●	Sex Offenses	9	9	●
Driving Under the Influence	18	19	↓	Sex Offenses, Nonforcible	1	0	↑
Drug Equipment Violations	20	25	↓	Stolen Property Offenses	8	6	↑
Drug/Narcotic Violations	21	28	↓	Trespass of Real Property	5	6	↓
Drunkenness	0	0	●	Weapon Law Violations	10	8	↑
Embezzlement	1	2	↓	CFS Status	Q4	3yr Avg	Up/Down
Extortion/Blackmail	0	2	↓	Dispatched	1,053	969	↑
Family Offenses (Nonviolent)	10	10	●	Initiated	1,708	1,491	↑
Fraud Offenses	20	20	●	Unspecified	1,129	924	↑
Gambling Offenses	0	0	●	Total	3,890	3,385	↑

Note: Initiated CFS are defined by whether the created date and time listed in the CFS match the on scene date and time entered by dispatch. Additionally, follow up and assignment CFS types are included in this category. Dispatched CFS are defined by whether an on scene time is listed in the CFS, and the CFS is not initially defined as initiated. Unspecified CFS include CFS with no on scene date and time information.

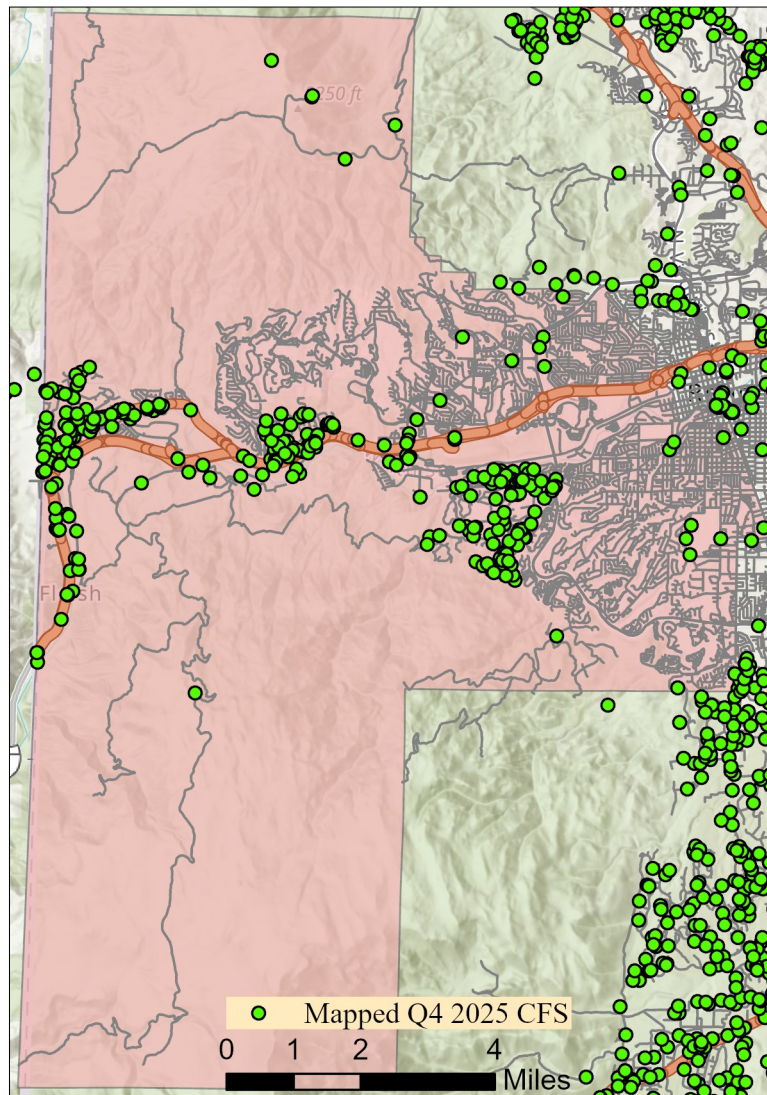
Warm Springs/Rural CAB



Offense Categories	Q4	3yr Avg	Up/Down	Offense Categories	Q4	3yr Avg	Up/Down
All Other Offenses	1	1	●	Homicide Offenses	0	0	●
Animal Cruelty	0	0	●	Human Trafficking Offenses	0	0	●
Arson	0	0	●	Kidnapping/Abduction	0	0	●
Assault Offenses	0	3	↓	Larceny/Theft Offenses	1	1	●
Bad Checks	0	0	●	Liquor Law Violations	0	0	●
Bribery	0	0	●	Motor Vehicle Theft	1	0	↑
Burglary	0	0	●	Peeping Tom	0	0	●
Counterfeiting/Forgery	0	0	●	Pornography/Obscene Material	0	0	●
Curfew/Loitering/Vagrancy	0	0	●	Prostitution Offenses	0	0	●
Destruction/Damage/Vandalism	0	1	↓	Robbery	1	0	↑
Disorderly Conduct	0	0	●	Sex Offenses	0	0	●
Driving Under the Influence	0	0	●	Sex Offenses, Nonforcible	0	0	●
Drug Equipment Violations	0	0	●	Stolen Property Offenses	0	0	●
Drug/Narcotic Violations	0	0	●	Trespass of Real Property	1	0	↑
Drunkenness	0	0	●	Weapon Law Violations	1	0	↑
Embezzlement	0	0	●	CFS Status	Q4	3yr Avg	Up/Down
Extortion/Blackmail	1	0	↑	Dispatched	50	52	↓
Family Offenses (Nonviolent)	0	1	↓	Initiated	30	55	↓
Fraud Offenses	1	3	↓	Unspecified	123	77	↑
Gambling Offenses	0	0	●	Total	203	184	↑

Note: Initiated CFS are defined by whether the created date and time listed in the CFS match the on scene date and time entered by dispatch. Additionally, follow up and assignment CFS types are included in this category. Dispatched CFS are defined by whether an on scene time is listed in the CFS, and the CFS is not initially defined as initiated. Unspecified CFS include CFS with no on scene date and time information.

West Truckee Meadows/Verdi CAB



Offense Categories	Q4	3yr Avg	Up/Down	Offense Categories	Q4	3yr Avg	Up/Down
All Other Offenses	10	11	↓	Homicide Offenses	0	0	●
Animal Cruelty	0	0	●	Human Trafficking Offenses	0	0	●
Arson	0	0	●	Kidnapping/Abduction	0	1	↓
Assault Offenses	3	5	↓	Larceny/Theft Offenses	10	8	↑
Bad Checks	0	0	●	Liquor Law Violations	0	0	●
Bribery	0	0	●	Motor Vehicle Theft	0	2	↓
Burglary	5	2	↑	Peeping Tom	0	0	●
Counterfeiting/Forgery	0	1	↓	Pornography/Obscene Material	0	0	●
Curfew/Loitering/Vagrancy	0	0	●	Prostitution Offenses	0	0	●
Destruction/Damage/Vandalism	8	4	↑	Robbery	1	0	↑
Disorderly Conduct	0	0	●	Sex Offenses	0	0	●
Driving Under the Influence	5	1	↑	Sex Offenses, Nonforcible	0	0	●
Drug Equipment Violations	4	5	↓	Stolen Property Offenses	0	1	↓
Drug/Narcotic Violations	7	11	↓	Trespass of Real Property	0	1	↓
Drunkenness	0	0	●	Weapon Law Violations	2	2	●
Embezzlement	0	0	●	CFS Status	Q4	3yr Avg	Up/Down
Extortion/Blackmail	1	0	↑	Dispatched	131	124	↑
Family Offenses (Nonviolent)	2	1	↑	Initiated	608	370	↑
Fraud Offenses	4	3	↑	Unspecified	284	162	↑
Gambling Offenses	0	0	●	Total	1,023	657	↑

Note: Initiated CFS are defined by whether the created date and time listed in the CFS match the on scene date and time entered by dispatch. Additionally, follow up and assignment CFS types are included in this category. Dispatched CFS are defined by whether an on scene time is listed in the CFS, and the CFS is not initially defined as initiated. Unspecified CFS include CFS with no on scene date and time information.