

Washoe County Sheriff's Office

CAB Data

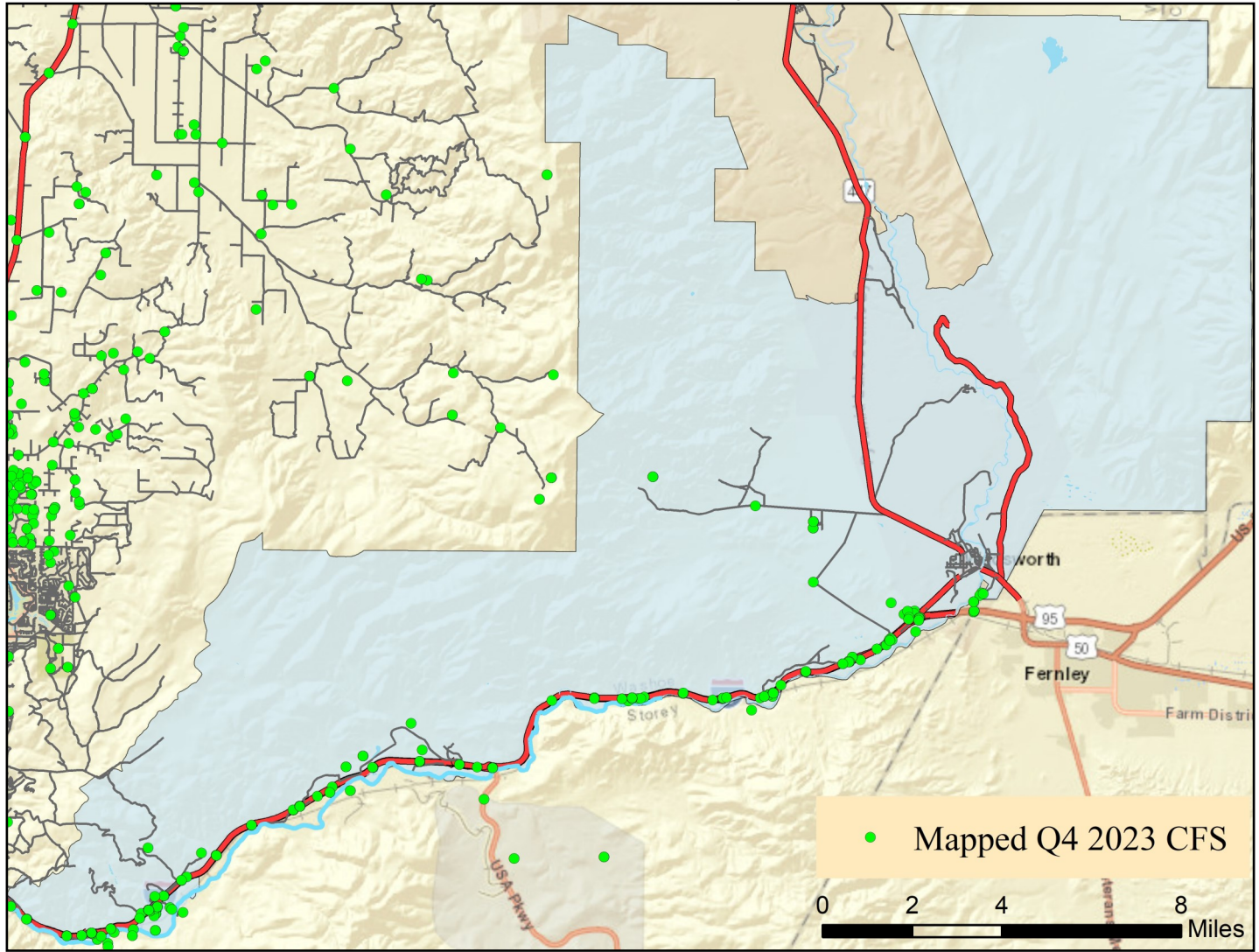
Quarter 4 2023



Note: Calls for service (CFS) and case data reflect WCSO jurisdictions. CFS and cases are mapped with useable coordinates only.

Published: 1/11/2024

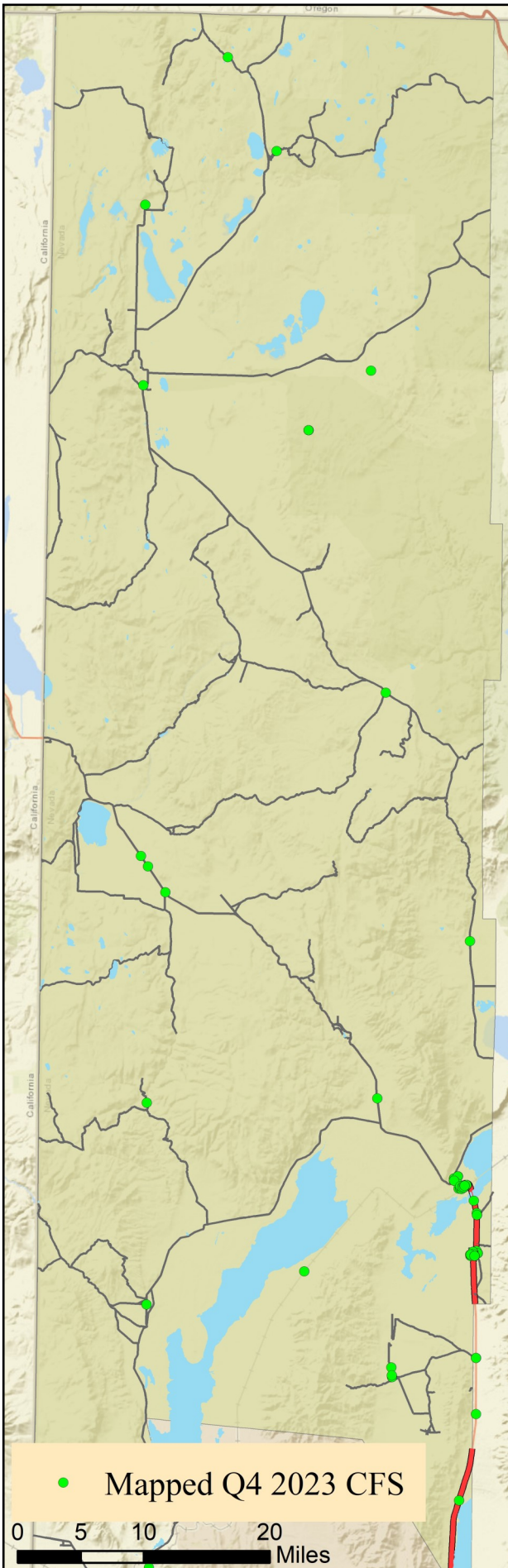
East Truckee Canyon CAB



Offense Categories	Q4	3yr Avg	Up/Down	Offense Categories	Q4	3yr Avg	Up/Down
All Other Offenses	2	1	↑	Homicide Offenses	0	0	●
Animal Cruelty	0	0	●	Human Trafficking Offenses	0	0	●
Arson	0	0	●	Kidnapping/Abduction	0	0	●
Assault Offenses	1	0	↑	Larceny/Theft Offenses	0	4	↓
Bad Checks	0	0	●	Liquor Law Violations	0	0	●
Bribery	0	0	●	Motor Vehicle Theft	0	1	↓
Burglary	0	0	●	Peeping Tom	0	0	●
Counterfeiting/Forgery	0	0	●	Pornography/Obscene Material	0	0	●
Curfew/Loitering/Vagrancy	0	0	●	Prostitution Offenses	0	0	●
Destruction/Damage/Vandalism	1	2	↓	Robbery	0	0	●
Disorderly Conduct	0	0	●	Sex Offenses	0	0	●
Driving Under the Influence	0	0	●	Sex Offenses, Nonforcible	0	0	●
Drug Equipment Violations	0	0	●	Stolen Property Offenses	1	0	↑
Drug/Narcotic Violations	4	1	↑	Trespass of Real Property	1	0	↑
Drunkness	0	0	●	Weapon Law Violations	2	0	↑
Embezzlement	0	0	●	CFS Status	Q4	3yr Avg	Up/Down
Extortion/Blackmail	0	0	●	Dispatched	48	48	●
Family Offenses (Nonviolent)	0	0	●	Initiated	388	195	↑
Fraud Offenses	0	1	↓	Unspecified	202	131	↑
Gambling Offenses	0	0	●	Total	638	374	↑

Note: Initiated CFS are defined by whether the created date and time listed in the CFS match the on scene date and time entered by dispatch. Additionally, follow up and assignment CFS types are included in this category. Dispatched CFS are defined by whether an on scene time is listed in the CFS, and the CFS is not initially defined as initiated. Unspecified CFS include CFS with no on scene date and time information.

Gerlach/Empire CAB

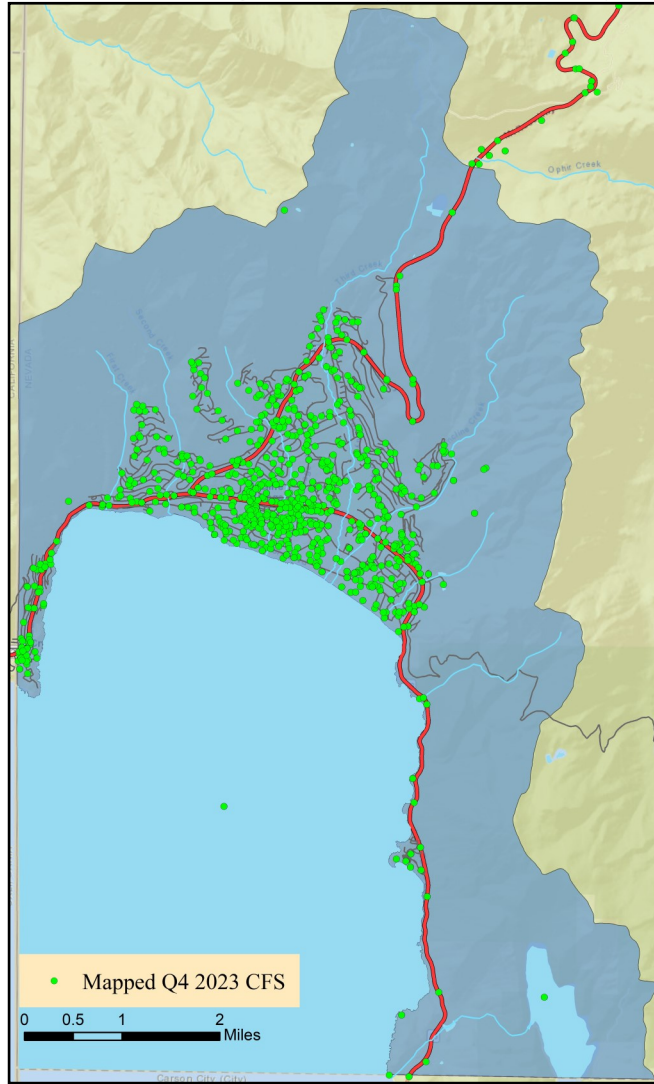


Offense Categories	Q4	3yr Avg	Up/Down
All Other Offenses	1	0	↑
Animal Cruelty	0	0	●
Arson	0	0	●
Assault Offenses	2	1	↑
Bad Checks	0	0	●
Bribery	0	0	●
Burglary	0	0	●
Counterfeiting/Forgery	0	0	●
Curfew/Loitering/Vagrancy	0	0	●
Destruction/Damage/Vandalism	0	1	↓
Disorderly Conduct	0	0	●
Driving Under the Influence	0	0	●
Drug Equipment Violations	0	0	●
Drug/Narcotic Violations	0	0	●
Drunkenness	0	0	●
Embezzlement	0	0	●
Extortion/Blackmail	0	0	●
Family Offenses (Nonviolent)	0	0	●
Fraud Offenses	0	0	●
Gambling Offenses	0	0	●

Offense Categories	Q4	3yr Avg	Up/Down
Homicide Offenses	0	0	●
Human Trafficking Offenses	0	0	●
Kidnapping/Abduction	0	0	●
Larceny/Theft Offenses	1	0	↑
Liquor Law Violations	0	0	●
Motor Vehicle Theft	0	0	●
Peeping Tom	0	0	●
Pornography/Obscene Material	0	0	●
Prostitution Offenses	1	0	↑
Robbery	0	0	●
Sex Offenses	0	0	●
Sex Offenses, Nonforcible	0	0	●
Stolen Property Offenses	0	0	●
Trespass of Real Property	1	0	↑
Weapon Law Violations	0	0	●
CFS Status	Q4	3yr Avg	Up/Down
Dispatched	20	23	↓
Initiated	224	236	↓
Unspecified	27	25	↑
Total	271	284	↓

Note: Initiated CFS are defined by whether the created date and time listed in the CFS match the on scene date and time entered by dispatch. Additionally, follow up and assignment CFS types are included in this category. Dispatched CFS are defined by whether an on scene time is listed in the CFS, and the CFS is not initially defined as initiated. Unspecified CFS include CFS with no on scene date and time information.

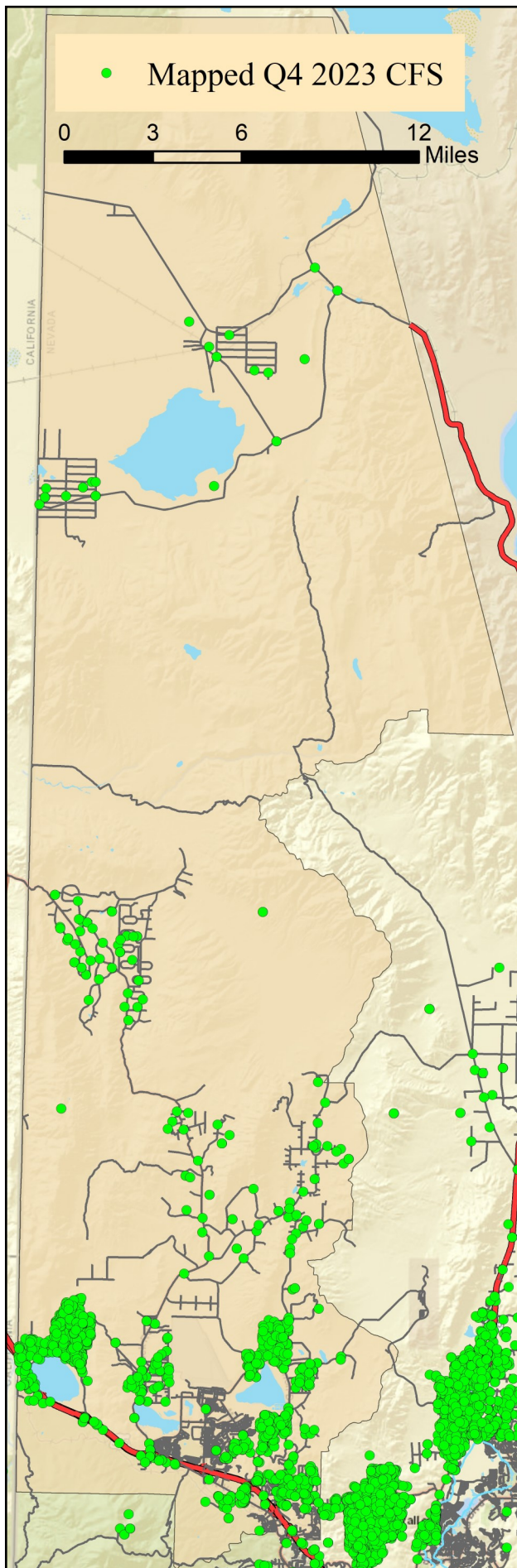
Incline Village/Crystal Bay CAB



Offense Categories	Q4	3yr Avg	Up/Down	Offense Categories	Q4	3yr Avg	Up/Down
All Other Offenses	9	9	●	Homicide Offenses	0	0	●
Animal Cruelty	0	0	●	Human Trafficking Offenses	1	0	↑
Arson	0	0	●	Kidnapping/Abduction	0	0	●
Assault Offenses	21	8	↑	Larceny/Theft Offenses	8	19	↓
Bad Checks	0	0	●	Liquor Law Violations	1	1	●
Bribery	0	0	●	Motor Vehicle Theft	0	1	↓
Burglary	2	2	●	Peeping Tom	0	0	●
Counterfeiting/Forgery	0	2	↓	Pornography/Obscene Material	1	0	↑
Curfew/Loitering/Vagrancy	0	1	↓	Prostitution Offenses	0	0	●
Destruction/Damage/Vandalism	6	11	↓	Robbery	1	0	↑
Disorderly Conduct	0	1	↓	Sex Offenses	1	2	↓
Driving Under the Influence	2	7	↓	Sex Offenses, Nonforcible	1	0	↑
Drug Equipment Violations	4	2	↑	Stolen Property Offenses	0	1	↓
Drug/Narcotic Violations	3	3	●	Trespass of Real Property	2	2	●
Drunkenness	0	0	●	Weapon Law Violations	1	1	●
Embezzlement	0	2	↓	CFS Status	Q4	3yr Avg	Up/Down
Extortion/Blackmail	0	0	●	Dispatched	489	575	↓
Family Offenses (Nonviolent)	0	1	↓	Initiated	1,878	1,797	↑
Fraud Offenses	8	13	↓	Unspecified	563	702	↓
Gambling Offenses	0	0	●	Total	2,930	3,073	↓

Note: Initiated CFS are defined by whether the created date and time listed in the CFS match the on scene date and time entered by dispatch. Additionally, follow up and assignment CFS types are included in this category. Dispatched CFS are defined by whether an on scene time is listed in the CFS, and the CFS is not initially defined as initiated. Unspecified CFS include CFS with no on scene date and time information.

North Valleys CAB

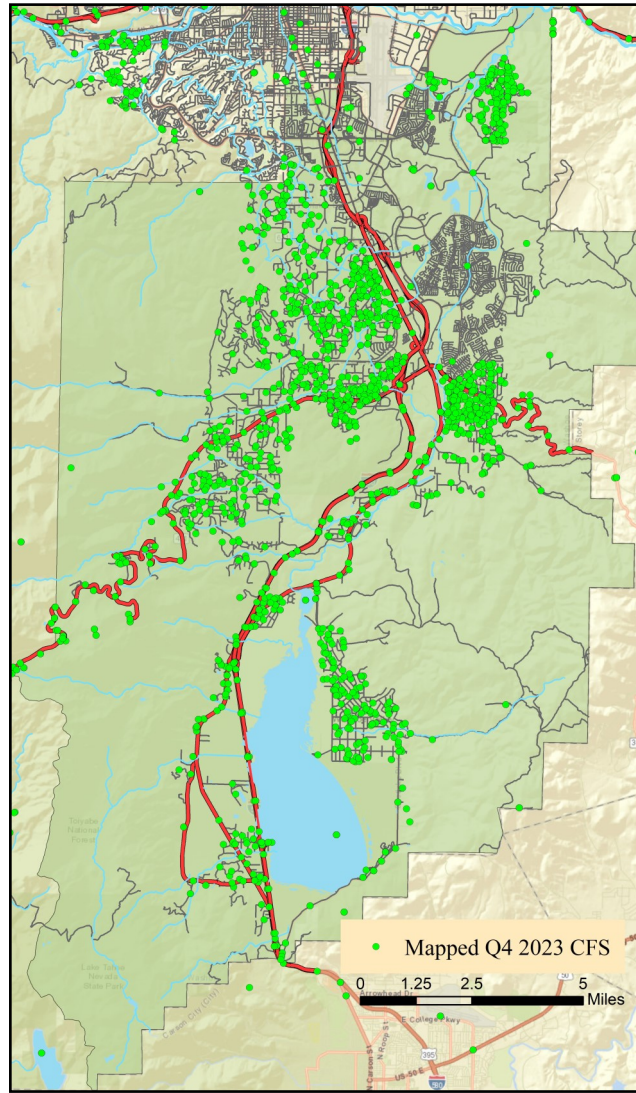


Offense Categories	Q4	3yr Avg	Up/Down
All Other Offenses	31	42	↓
Animal Cruelty	0	0	○
Arson	0	1	↓
Assault Offenses	37	33	↑
Bad Checks	0	0	○
Bribery	0	0	○
Burglary	7	6	↑
Counterfeiting/Forgery	3	2	↑
Curfew/Loitering/Vagrancy	0	0	○
Destruction/Damage/Vandalism	16	15	↑
Disorderly Conduct	0	2	↓
Driving Under the Influence	12	13	↓
Drug Equipment Violations	5	11	↓
Drug/Narcotic Violations	8	15	↓
Drunkenness	0	0	○
Embezzlement	0	1	↓
Extortion/Blackmail	2	0	↑
Family Offenses (Nonviolent)	7	8	↓
Fraud Offenses	20	28	↓
Gambling Offenses	0	0	○

Offense Categories	Q4	3yr Avg	Up/Down
Homicide Offenses	1	0	↑
Human Trafficking Offenses	0	0	○
Kidnapping/Abduction	3	1	↑
Larceny/Theft Offenses	21	22	↓
Liquor Law Violations	2	1	↑
Motor Vehicle Theft	3	5	↓
Peeping Tom	0	0	○
Pornography/Obscene Material	1	1	○
Prostitution Offenses	0	0	○
Robbery	1	1	○
Sex Offenses	7	5	↑
Sex Offenses, Nonforcible	0	0	○
Stolen Property Offenses	2	3	↓
Trespass of Real Property	4	2	↑
Weapon Law Violations	5	8	↓
CFS Status	Q4	3yr Avg	Up/Down
Dispatched	690	706	↓
Initiated	754	630	↑
Unspecified	821	704	↑
Total	2,265	2,040	↑

Note: Initiated CFS are defined by whether the created date and time listed in the CFS match the on scene date and time entered by dispatch. Additionally, follow up and assignment CFS types are included in this category. Dispatched CFS are defined by whether an on scene time is listed in the CFS, and the CFS is not initially defined as initiated. Unspecified CFS include CFS with no on scene date and time information.

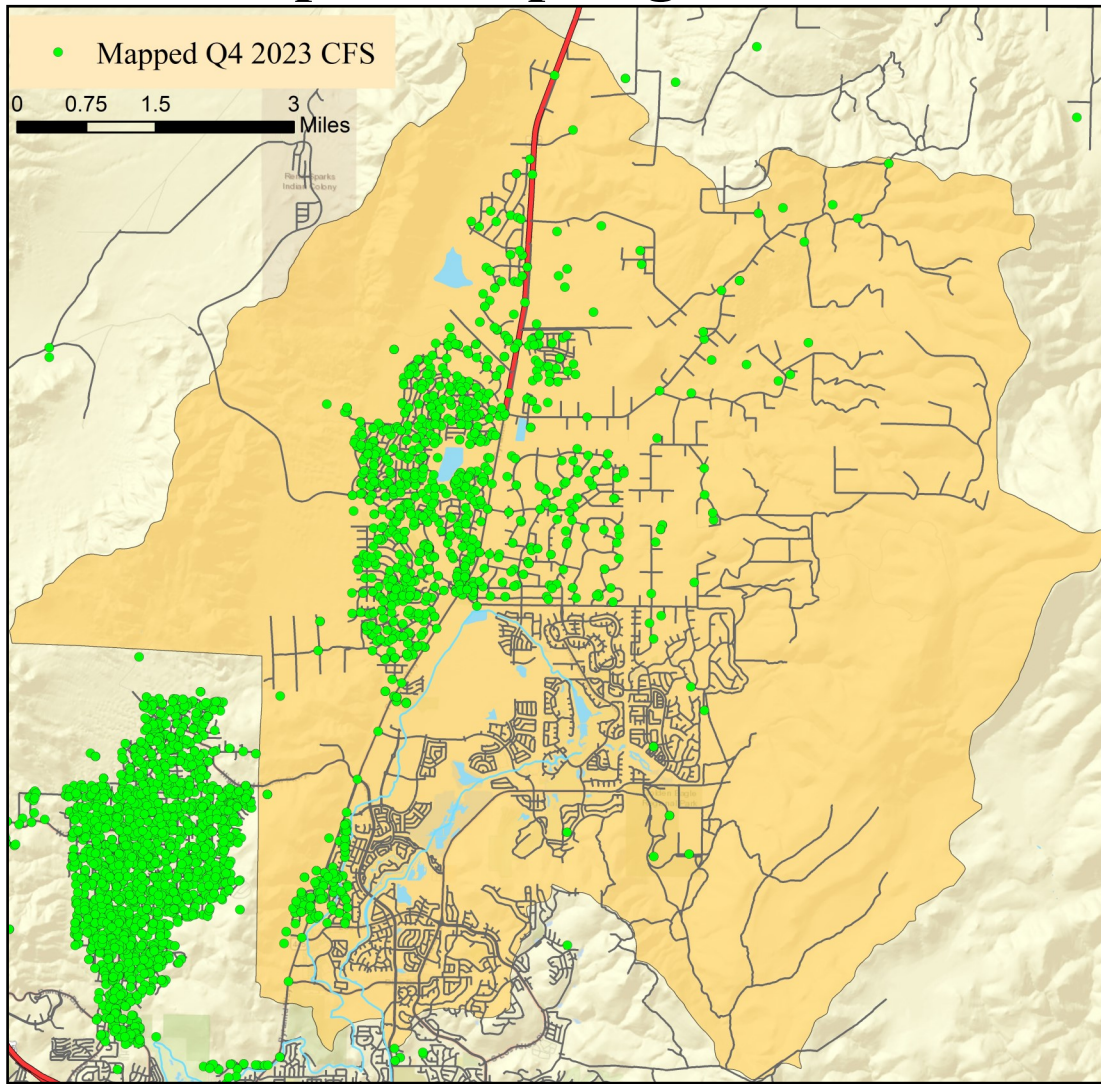
South Truckee Meadows/Washoe Valley CAB



Offense Categories	Q4	3yr Avg	Up/Down	Offense Categories	Q4	3yr Avg	Up/Down
All Other Offenses	23	28	↓	Homicide Offenses	0	0	●
Animal Cruelty	0	1	↓	Human Trafficking Offenses	0	0	●
Arson	1	0	↑	Kidnapping/Abduction	0	1	↓
Assault Offenses	32	21	↑	Larceny/Theft Offenses	26	44	↓
Bad Checks	0	0	●	Liquor Law Violations	0	0	●
Bribery	0	0	●	Motor Vehicle Theft	2	1	↑
Burglary	12	11	↑	Peeping Tom	0	0	●
Counterfeiting/Forgery	4	4	●	Pornography/Obscene Material	0	1	↓
Curfew/Loitering/Vagrancy	0	0	●	Prostitution Offenses	0	0	●
Destruction/Damage/Vandalism	21	25	↓	Robbery	0	1	↓
Disorderly Conduct	1	4	↓	Sex Offenses	7	6	↑
Driving Under the Influence	10	6	↑	Sex Offenses, Nonforcible	0	0	●
Drug Equipment Violations	14	4	↑	Stolen Property Offenses	9	5	↑
Drug/Narcotic Violations	14	7	↑	Trespass of Real Property	7	3	↑
Drunkenness	0	0	●	Weapon Law Violations	7	3	↑
Embezzlement	0	1	↓	CFS Status	Q4	3yr Avg	Up/Down
Extortion/Blackmail	1	1	●	Dispatched	728	682	↑
Family Offenses (Nonviolent)	4	3	↑	Initiated	1,053	755	↑
Fraud Offenses	33	40	↓	Unspecified	1,139	1,012	↑
Gambling Offenses	0	0	●	Total	2,920	2,449	↑

Note: Initiated CFS are defined by whether the created date and time listed in the CFS match the on scene date and time entered by dispatch. Additionally, follow up and assignment CFS types are included in this category. Dispatched CFS are defined by whether an on scene time is listed in the CFS, and the CFS is not initially defined as initiated. Unspecified CFS include CFS with no on scene date and time information.

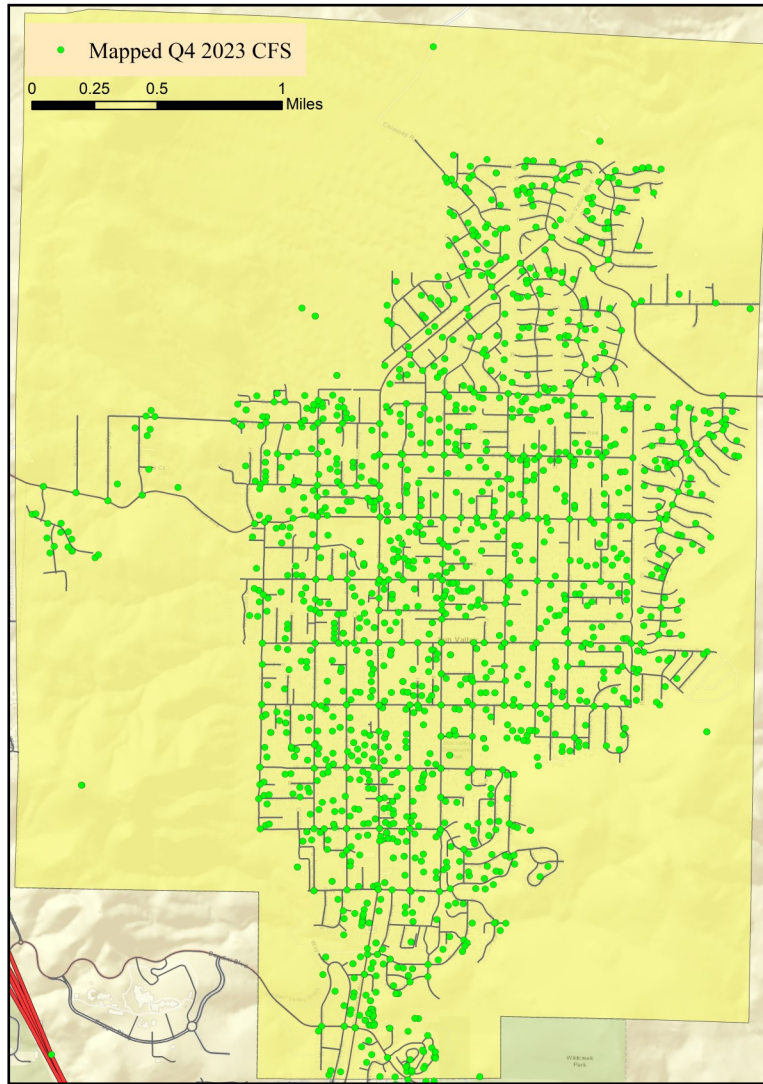
Spanish Springs CAB



Offense Categories	Q4	3yr Avg	Up/Down	Offense Categories	Q4	3yr Avg	Up/Down
All Other Offenses	24	14	↑	Homicide Offenses	0	0	●
Animal Cruelty	0	0	●	Human Trafficking Offenses	0	0	●
Arson	1	0	↑	Kidnapping/Abduction	2	1	↑
Assault Offenses	31	19	↑	Larceny/Theft Offenses	12	15	↓
Bad Checks	0	0	●	Liquor Law Violations	3	1	↑
Bribery	0	0	●	Motor Vehicle Theft	1	1	●
Burglary	6	4	↑	Peeping Tom	0	0	●
Counterfeiting/Forgery	1	2	↓	Pornography/Obscene Material	1	0	↑
Curfew/Loitering/Vagrancy	0	0	●	Prostitution Offenses	0	0	●
Destruction/Damage/Vandalism	15	14	↑	Robbery	2	0	↑
Disorderly Conduct	0	2	↓	Sex Offenses	7	4	↑
Driving Under the Influence	1	4	↓	Sex Offenses, Nonforcible	0	0	●
Drug Equipment Violations	3	2	↑	Stolen Property Offenses	2	2	●
Drug/Narcotic Violations	5	1	↑	Trespass of Real Property	5	2	↑
Drunkness	0	0	●	Weapon Law Violations	1	2	↓
Embezzlement	0	0	●	CFS Status	Q4	3yr Avg	Up/Down
Extortion/Blackmail	2	0	↑	Dispatched	485	394	↑
Family Offenses (Nonviolent)	4	3	↑	Initiated	536	298	↑
Fraud Offenses	14	27	↓	Unspecified	646	582	↑
Gambling Offenses	0	0	●	Total	1,667	1,273	↑

Note: Initiated CFS are defined by whether the created date and time listed in the CFS match the on scene date and time entered by dispatch. Additionally, follow up and assignment CFS types are included in this category. Dispatched CFS are defined by whether an on scene time is listed in the CFS, and the CFS is not initially defined as initiated. Unspecified CFS include CFS with no on scene date and time information.

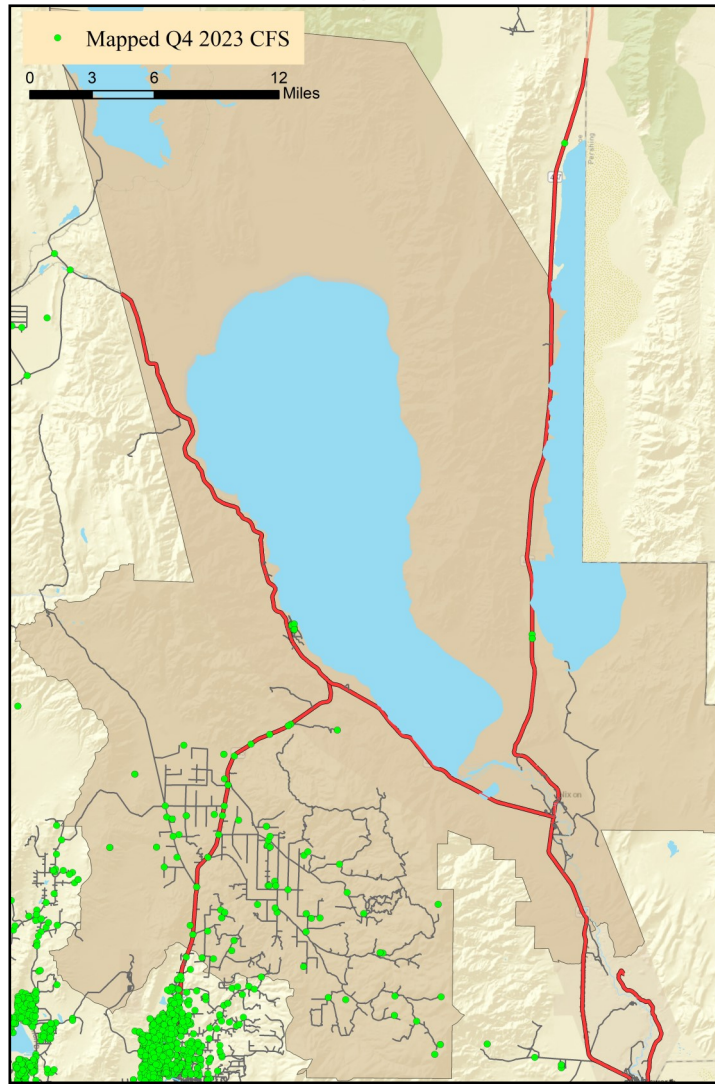
Sun Valley CAB



Offense Categories	Q4	3yr Avg	Up/Down	Offense Categories	Q4	3yr Avg	Up/Down
All Other Offenses	64	106	↓	Homicide Offenses	0	0	●
Animal Cruelty	1	0	↑	Human Trafficking Offenses	0	0	●
Arson	0	0	●	Kidnapping/Abduction	1	3	↓
Assault Offenses	53	55	↓	Larceny/Theft Offenses	33	36	↓
Bad Checks	0	0	●	Liquor Law Violations	1	3	↓
Bribery	0	0	●	Motor Vehicle Theft	15	10	↑
Burglary	13	13	●	Peeping Tom	0	0	●
Counterfeiting/Forgery	8	3	↑	Pornography/Obscene Material	0	0	●
Curfew/Loitering/Vagrancy	0	2	↓	Prostitution Offenses	0	0	●
Destruction/Damage/Vandalism	32	30	↑	Robbery	2	1	↑
Disorderly Conduct	3	3	●	Sex Offenses	12	4	↑
Driving Under the Influence	23	18	↑	Sex Offenses, Nonforcible	0	0	●
Drug Equipment Violations	26	25	↑	Stolen Property Offenses	8	9	↓
Drug/Narcotic Violations	28	31	↓	Trespass of Real Property	7	4	↑
Drunkenness	0	0	●	Weapon Law Violations	6	10	↓
Embezzlement	2	3	↓	CFS Status	Q4	3yr Avg	Up/Down
Extortion/Blackmail	0	2	↓	Dispatched	1,015	1,031	↓
Family Offenses (Nonviolent)	15	9	↑	Initiated	1,373	1,497	↓
Fraud Offenses	22	28	↓	Unspecified	887	831	↑
Gambling Offenses	0	0	●	Total	3,275	3,360	↓

Note: Initiated CFS are defined by whether the created date and time listed in the CFS match the on scene date and time entered by dispatch. Additionally, follow up and assignment CFS types are included in this category. Dispatched CFS are defined by whether an on scene time is listed in the CFS, and the CFS is not initially defined as initiated. Unspecified CFS include CFS with no on scene date and time information.

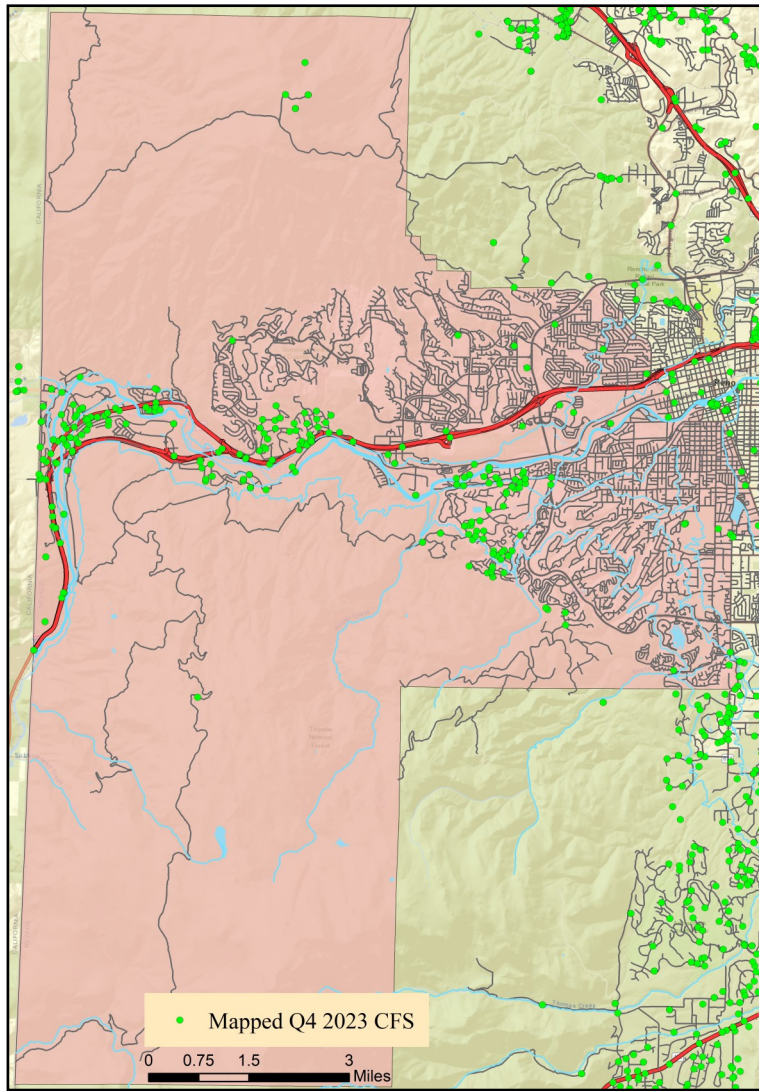
Warm Springs/Rural CAB



Offense Categories	Q4	3yr Avg	Up/Down	Offense Categories	Q4	3yr Avg	Up/Down
All Other Offenses	0	1	↓	Homicide Offenses	0	0	●
Animal Cruelty	0	0	●	Human Trafficking Offenses	0	0	●
Arson	0	0	●	Kidnapping/Abduction	0	0	●
Assault Offenses	3	2	↑	Larceny/Theft Offenses	2	1	↑
Bad Checks	0	0	●	Liquor Law Violations	0	0	●
Bribery	0	0	●	Motor Vehicle Theft	0	0	●
Burglary	0	0	●	Peeping Tom	0	0	●
Counterfeiting/Forgery	0	0	●	Pornography/Obscene Material	0	0	●
Curfew/Loitering/Vagrancy	0	0	●	Prostitution Offenses	0	0	●
Destruction/Damage/Vandalism	2	1	↑	Robbery	0	0	●
Disorderly Conduct	0	0	●	Sex Offenses	0	0	●
Driving Under the Influence	0	0	●	Sex Offenses, Nonforcible	0	0	●
Drug Equipment Violations	1	0	↑	Stolen Property Offenses	0	0	●
Drug/Narcotic Violations	0	0	●	Trespass of Real Property	1	0	↑
Drunkness	0	0	●	Weapon Law Violations	1	0	↑
Embezzlement	0	0	●	CFS Status	Q4	3yr Avg	Up/Down
Extortion/Blackmail	0	0	●	Dispatched	49	39	↑
Family Offenses (Nonviolent)	0	0	●	Initiated	43	41	↑
Fraud Offenses	2	2	●	Unspecified	73	64	↑
Gambling Offenses	0	0	●	Total	165	144	↑

Note: Initiated CFS are defined by whether the created date and time listed in the CFS match the on scene date and time entered by dispatch. Additionally, follow up and assignment CFS types are included in this category. Dispatched CFS are defined by whether an on scene time is listed in the CFS, and the CFS is not initially defined as initiated. Unspecified CFS include CFS with no on scene date and time information.

West Truckee Meadows/Verdi CAB



Offense Categories	Q4	3yr Avg	Up/Down	Offense Categories	Q4	3yr Avg	Up/Down
All Other Offenses	8	10	↓	Homicide Offenses	0	0	●
Animal Cruelty	0	0	●	Human Trafficking Offenses	0	0	●
Arson	0	0	●	Kidnapping/Abduction	0	0	●
Assault Offenses	6	4	↑	Larceny/Theft Offenses	8	14	↓
Bad Checks	0	0	●	Liquor Law Violations	0	0	●
Bribery	0	0	●	Motor Vehicle Theft	2	2	●
Burglary	2	4	↓	Peeping Tom	0	0	●
Counterfeiting/Forgery	1	0	↑	Pornography/Obscene Material	0	0	●
Curfew/Loitering/Vagrancy	0	0	●	Prostitution Offenses	0	0	●
Destruction/Damage/Vandalism	2	7	↓	Robbery	0	0	●
Disorderly Conduct	0	0	●	Sex Offenses	0	2	↓
Driving Under the Influence	0	2	↓	Sex Offenses, Nonforcible	0	0	●
Drug Equipment Violations	9	4	↑	Stolen Property Offenses	2	1	↑
Drug/Narcotic Violations	14	6	↑	Trespass of Real Property	1	1	●
Drunkness	0	0	●	Weapon Law Violations	0	2	↓
Embezzlement	0	0	●	CFS Status	Q4	3yr Avg	Up/Down
Extortion/Blackmail	0	0	●	Dispatched	133	143	↓
Family Offenses (Nonviolent)	1	1	●	Initiated	403	310	↑
Fraud Offenses	4	5	↓	Unspecified	157	160	↓
Gambling Offenses	0	0	●	Total	693	613	↑

Note: Initiated CFS are defined by whether the created date and time listed in the CFS match the on scene date and time entered by dispatch. Additionally, follow up and assignment CFS types are included in this category. Dispatched CFS are defined by whether an on scene time is listed in the CFS, and the CFS is not initially defined as initiated. Unspecified CFS include CFS with no on scene date and time information.