

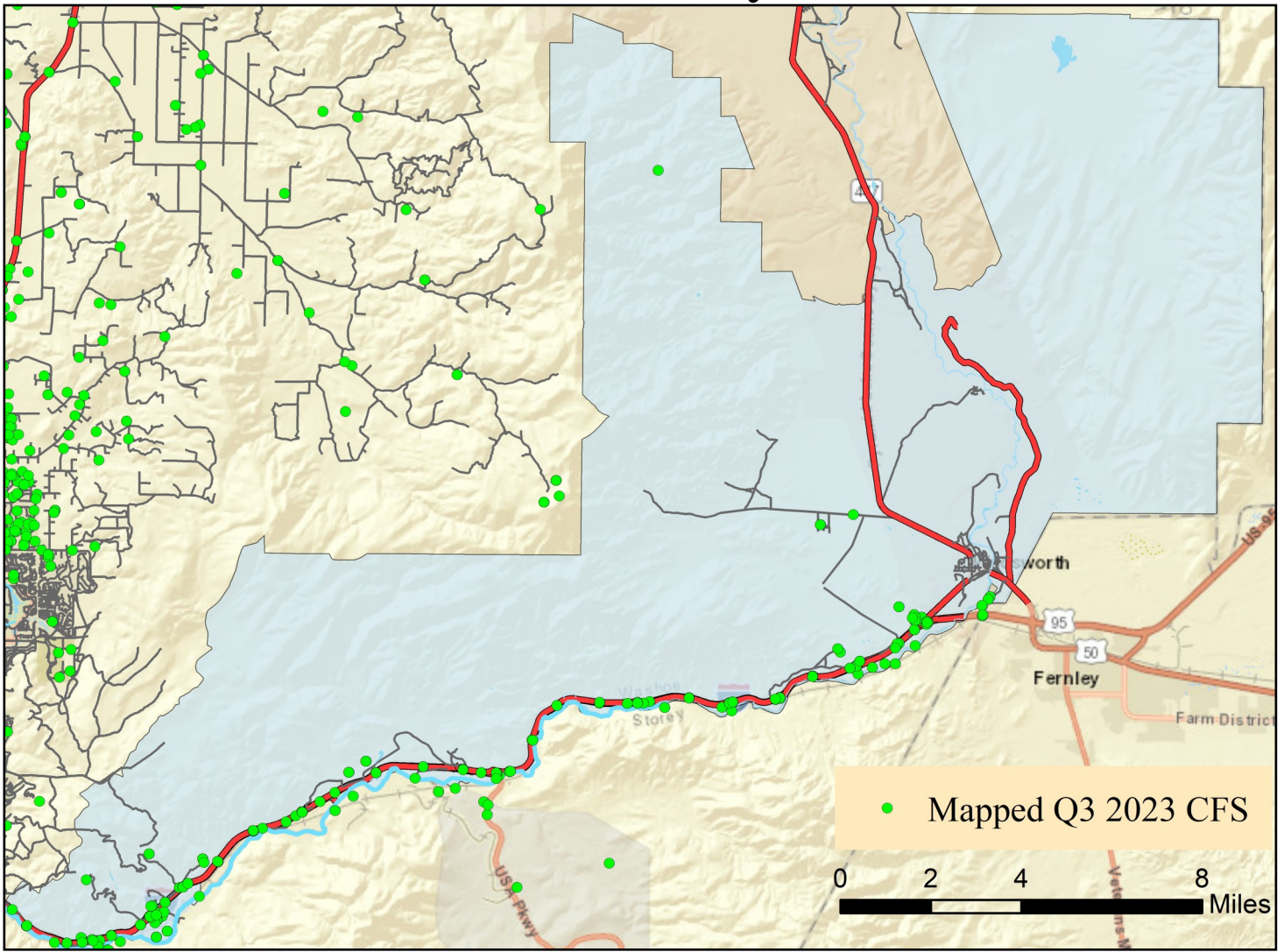
Washoe County Sheriff's Office

CAB Data

Quarter 3 2023



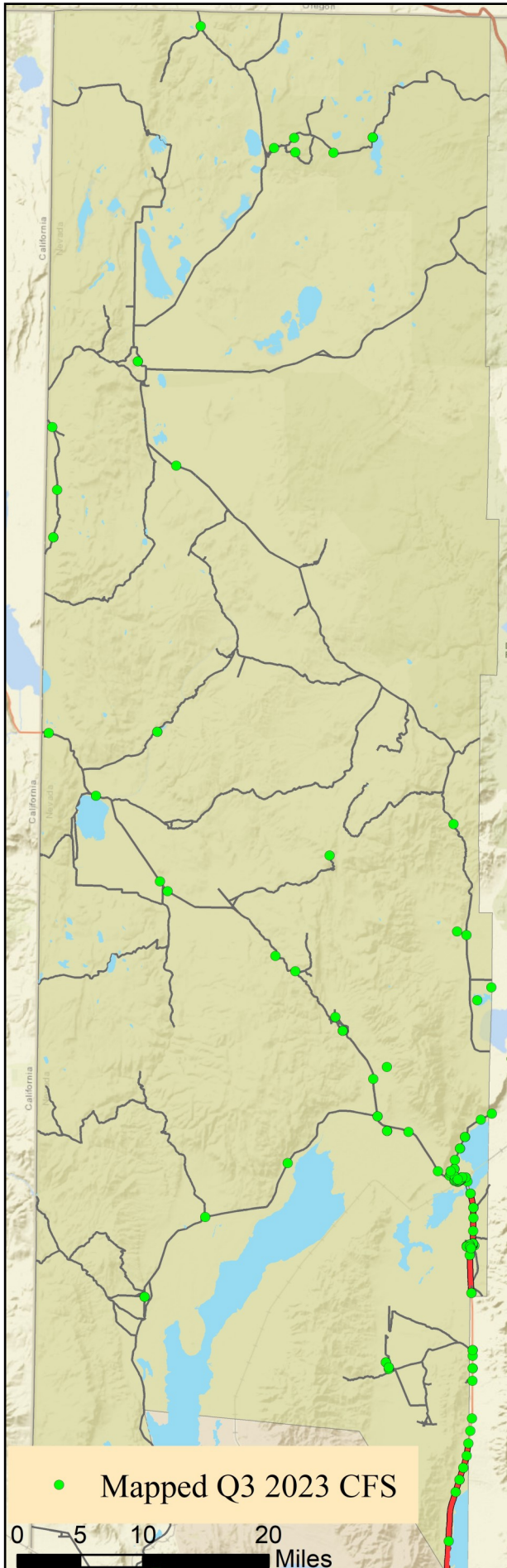
East Truckee Canyon CAB



Offense Categories	Q3	3yr Avg	Up/Down	Offense Categories	Q3	3yr Avg	Up/Down
All Other Offenses	1	1	●	Homicide Offenses	0	0	●
Animal Cruelty	0	0	●	Human Trafficking Offenses	0	0	●
Arson	0	0	●	Kidnapping/Abduction	0	0	●
Assault Offenses	1	3	↓	Larceny/Theft Offenses	1	4	↓
Bad Checks	0	0	●	Liquor Law Violations	0	0	●
Bribery	0	0	●	Motor Vehicle Theft	1	1	●
Burglary	1	2	↓	Peeping Tom	0	0	●
Counterfeiting/Forgery	0	0	●	Pornography/Obscene Material	0	0	●
Curfew/Loitering/Vagrancy	0	0	●	Prostitution Offenses	0	0	●
Destruction/Damage/Vandalism	2	3	↓	Robbery	0	0	●
Disorderly Conduct	0	0	●	Sex Offenses	0	0	●
Driving Under the Influence	1	0	↑	Sex Offenses, Nonforcible	0	0	●
Drug Equipment Violations	0	1	↓	Stolen Property Offenses	0	0	●
Drug/Narcotic Violations	3	1	↑	Trespass of Real Property	0	0	●
Drunkness	0	0	●	Weapon Law Violations	1	0	↑
Embezzlement	0	0	●	CFS Status	Q3	3yr Avg	Up/Down
Extortion/Blackmail	0	0	●	Dispatched	71	54	↑
Family Offenses (Nonviolent)	0	0	●	Initiated	267	166	↑
Fraud Offenses	0	0	●	Unspecified	257	172	↑
Gambling Offenses	0	0	●	Total	595	391	↑

Note: Initiated CFS are defined by whether the created date and time listed in the CFS match the on scene date and time entered by dispatch. Additionally, follow up and assignment CFS types are included in this category. Dispatched CFS are defined by whether an on scene time is listed in the CFS, and the CFS is not initially defined as initiated. Unspecified CFS include CFS with no on scene date and time information.

Gerlach/Empire CAB

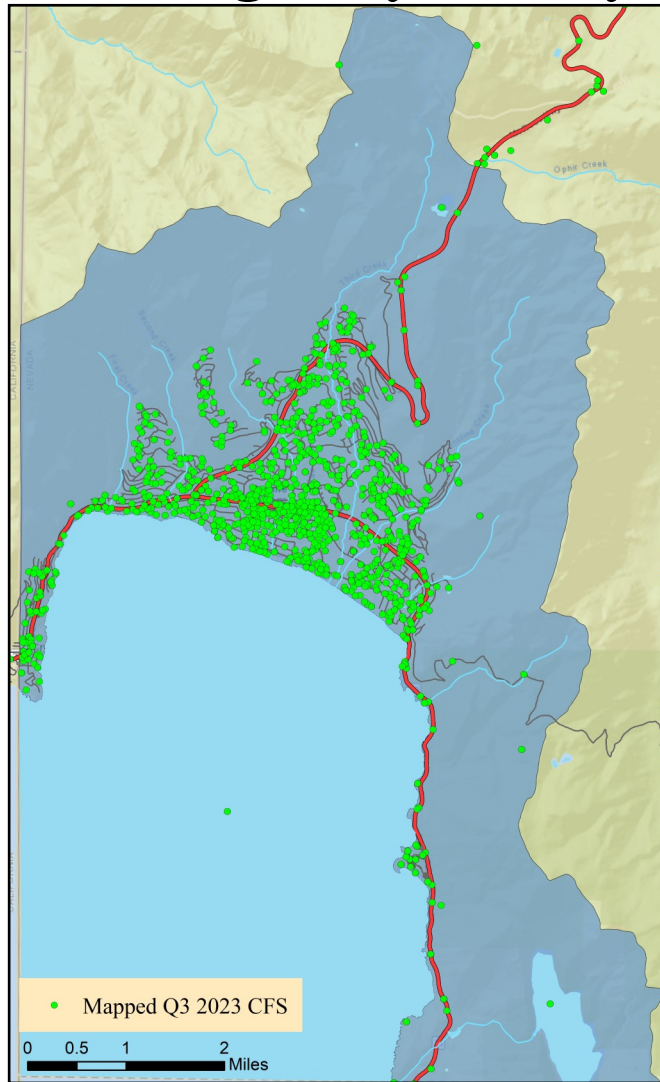


Offense Categories	Q3	3yr Avg	Up/Down
All Other Offenses	3	1	↑
Animal Cruelty	0	0	●
Arson	0	0	●
Assault Offenses	0	0	●
Bad Checks	0	0	●
Bribery	0	0	●
Burglary	0	0	●
Counterfeiting/Forgery	0	0	●
Curfew/Loitering/Vagrancy	0	0	●
Destruction/Damage/Vandalism	0	0	●
Disorderly Conduct	0	0	●
Driving Under the Influence	0	0	●
Drug Equipment Violations	0	0	●
Drug/Narcotic Violations	0	0	●
Drunkenness	0	0	●
Embezzlement	0	0	●
Extortion/Blackmail	0	0	●
Family Offenses (Nonviolent)	0	0	●
Fraud Offenses	0	0	●
Gambling Offenses	0	0	●

Offense Categories	Q3	3yr Avg	Up/Down
Homicide Offenses	0	0	●
Human Trafficking Offenses	0	0	●
Kidnapping/Abduction	0	0	●
Larceny/Theft Offenses	2	0	↑
Liquor Law Violations	0	0	●
Motor Vehicle Theft	1	0	↑
Peeping Tom	0	0	●
Pornography/Obscene Material	0	0	●
Prostitution Offenses	0	0	●
Robbery	0	0	●
Sex Offenses	0	1	↓
Sex Offenses, Nonforcible	0	0	●
Stolen Property Offenses	0	0	●
Trespass of Real Property	0	1	↓
Weapon Law Violations	0	0	●
CFS Status	Q3	3yr Avg	Up/Down
Dispatched	71	40	↑
Initiated	699	454	↑
Unspecified	77	46	↑
Total	847	540	↑

Note: Initiated CFS are defined by whether the created date and time listed in the CFS match the on scene date and time entered by dispatch. Additionally, follow up and assignment CFS types are included in this category. Dispatched CFS are defined by whether an on scene time is listed in the CFS, and the CFS is not initially defined as initiated. Unspecified CFS include CFS with no on scene date and time information.

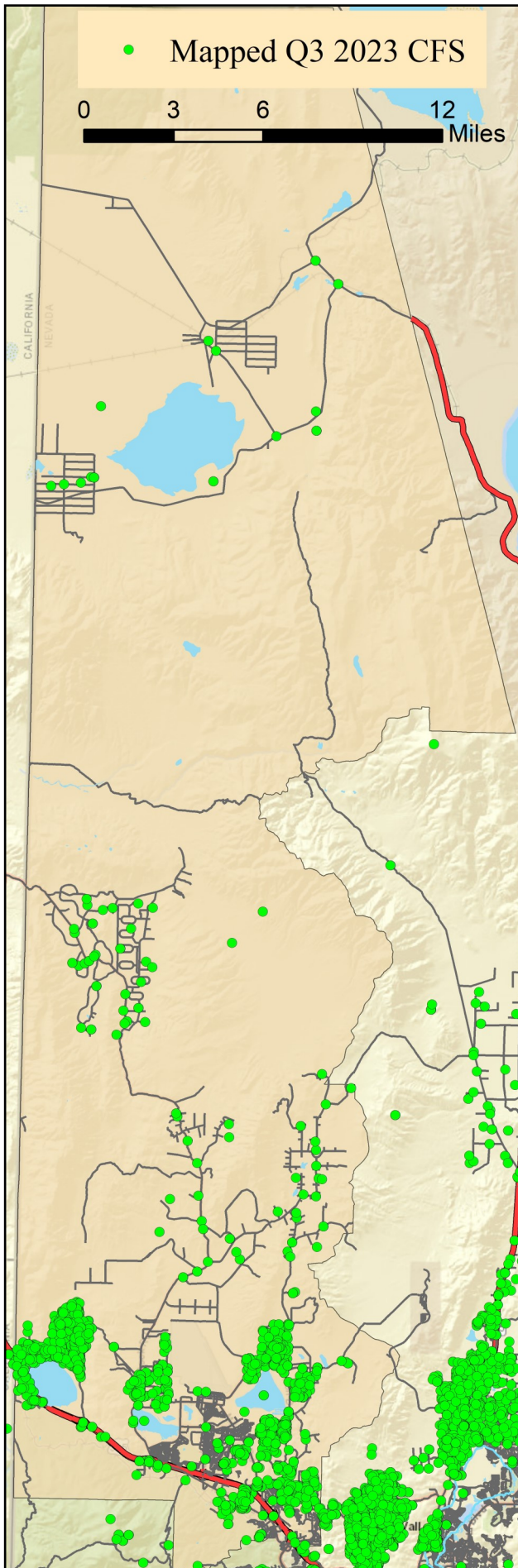
Incline Village/Crystal Bay CAB



Offense Categories	Q3	3yr Avg	Up/Down	Offense Categories	Q3	3yr Avg	Up/Down
All Other Offenses	20	18	↑	Homicide Offenses	0	0	●
Animal Cruelty	0	0	●	Human Trafficking Offenses	0	0	●
Arson	0	0	●	Kidnapping/Abduction	0	0	●
Assault Offenses	12	13	↓	Larceny/Theft Offenses	10	18	↓
Bad Checks	0	1	↓	Liquor Law Violations	1	1	●
Bribery	0	0	●	Motor Vehicle Theft	4	1	↑
Burglary	5	4	↑	Peeping Tom	0	0	●
Counterfeiting/Forgery	1	1	●	Pornography/Obscene Material	0	0	●
Curfew/Loitering/Vagrancy	0	0	●	Prostitution Offenses	0	0	●
Destruction/Damage/Vandalism	11	13	↓	Robbery	1	0	↑
Disorderly Conduct	1	3	↓	Sex Offenses	2	1	↑
Driving Under the Influence	5	8	↓	Sex Offenses, Nonforcible	0	0	●
Drug Equipment Violations	1	3	↓	Stolen Property Offenses	1	1	●
Drug/Narcotic Violations	3	4	↓	Trespass of Real Property	3	3	●
Drunkness	0	0	●	Weapon Law Violations	1	0	↑
Embezzlement	0	1	↓	CFS Status	Q3	3yr Avg	Up/Down
Extortion/Blackmail	0	1	↓	Dispatched	755	815	↓
Family Offenses (Nonviolent)	0	0	●	Initiated	1,879	2,272	↓
Fraud Offenses	10	21	↓	Unspecified	1,045	1,316	↓
Gambling Offenses	0	0	●	Total	3,679	4,403	↓

Note: Initiated CFS are defined by whether the created date and time listed in the CFS match the on scene date and time entered by dispatch. Additionally, follow up and assignment CFS types are included in this category. Dispatched CFS are defined by whether an on scene time is listed in the CFS, and the CFS is not initially defined as initiated. Unspecified CFS include CFS with no on scene date and time information.

North Valleys CAB

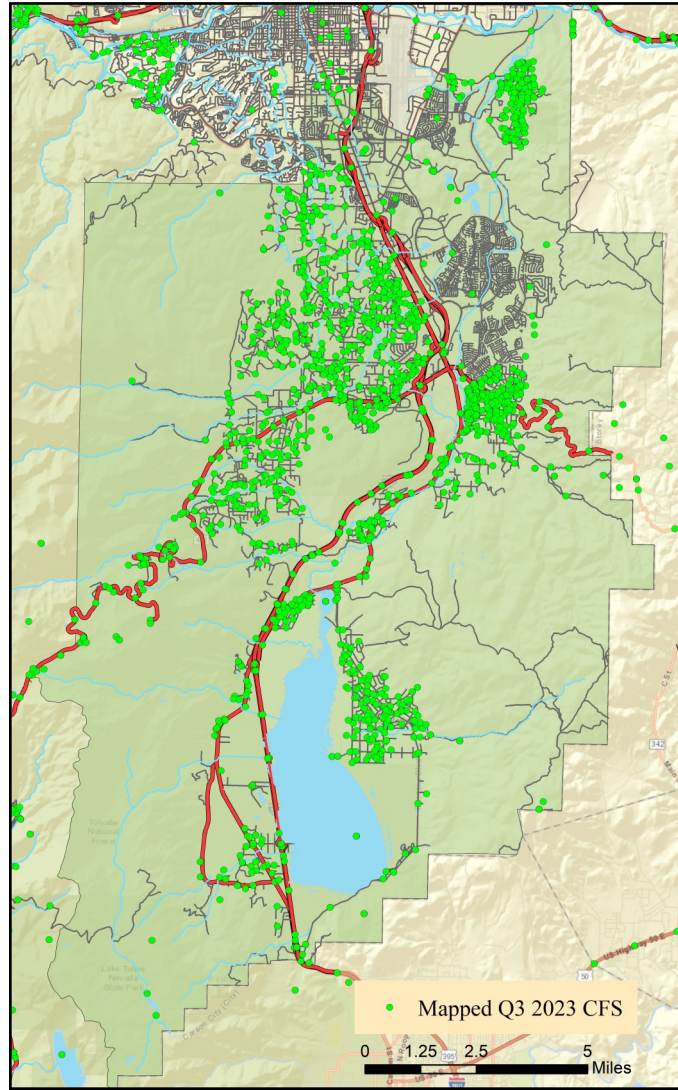


Offense Categories	Q3	3yr Avg	Up/Down
All Other Offenses	52	52	●
Animal Cruelty	0	0	●
Arson	0	2	↓
Assault Offenses	37	40	↓
Bad Checks	0	0	●
Bribery	0	0	●
Burglary	12	9	↑
Counterfeiting/Forgery	0	1	↓
Curfew/Loitering/Vagrancy	0	0	●
Destruction/Damage/Vandalism	17	22	↓
Disorderly Conduct	7	3	↑
Driving Under the Influence	9	12	↓
Drug Equipment Violations	13	10	↑
Drug/Narcotic Violations	17	15	↑
Drunkenness	0	0	●
Embezzlement	0	0	●
Extortion/Blackmail	0	0	●
Family Offenses (Nonviolent)	8	8	●
Fraud Offenses	18	31	↓
Gambling Offenses	0	0	●

Offense Categories	Q3	3yr Avg	Up/Down
Homicide Offenses	0	0	●
Human Trafficking Offenses	0	0	●
Kidnapping/Abduction	2	1	↑
Larceny/Theft Offenses	21	24	↓
Liquor Law Violations	0	1	↓
Motor Vehicle Theft	6	7	↓
Peeping Tom	0	0	●
Pornography/Obscene Material	1	1	●
Prostitution Offenses	0	0	●
Robbery	2	1	↑
Sex Offenses	4	7	↓
Sex Offenses, Nonforcible	0	1	↓
Stolen Property Offenses	4	3	↑
Trespass of Real Property	6	2	↑
Weapon Law Violations	5	7	↓
CFS Status	Q3	3yr Avg	Up/Down
Dispatched	804	833	↓
Initiated	688	831	↓
Unspecified	918	784	↑
Total	2,410	2,447	↓

Note: Initiated CFS are defined by whether the created date and time listed in the CFS match the on scene date and time entered by dispatch. Additionally, follow up and assignment CFS types are included in this category. Dispatched CFS are defined by whether an on scene time is listed in the CFS, and the CFS is not initially defined as initiated. Unspecified CFS include CFS with no on scene date and time information.

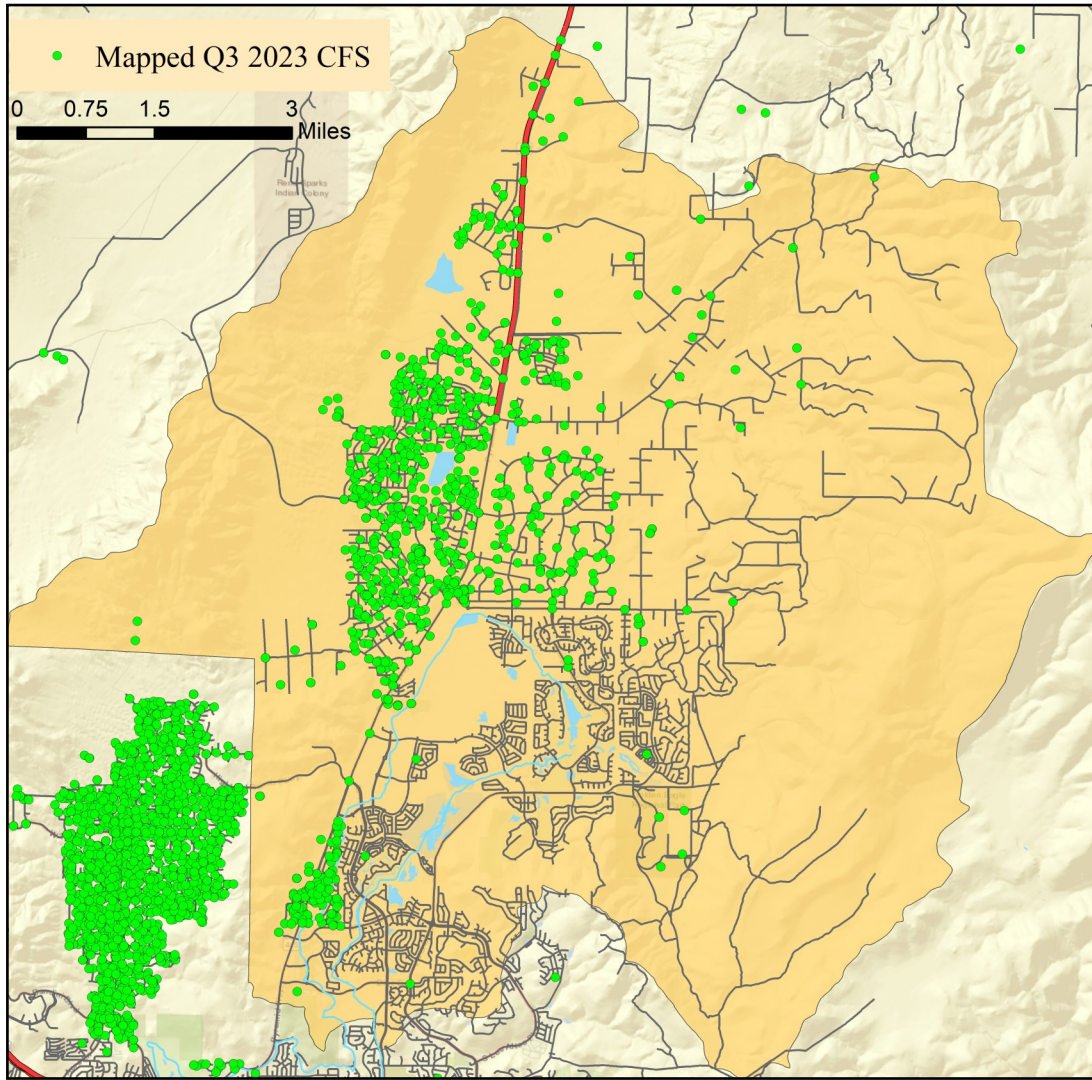
South Truckee Meadows/Washoe Valley CAB



Offense Categories	Q3	3yr Avg	Up/Down	Offense Categories	Q3	3yr Avg	Up/Down
All Other Offenses	29	36	↓	Homicide Offenses	1	0	↑
Animal Cruelty	0	0	●	Human Trafficking Offenses	0	0	●
Arson	0	1	↓	Kidnapping/Abduction	1	0	↑
Assault Offenses	26	25	↑	Larceny/Theft Offenses	21	47	↓
Bad Checks	0	0	●	Liquor Law Violations	3	3	●
Bribery	0	0	●	Motor Vehicle Theft	6	4	↑
Burglary	7	8	↓	Peeping Tom	0	0	●
Counterfeiting/Forgery	2	4	↓	Pornography/Obscene Material	1	0	↑
Curfew/Loitering/Vagrancy	0	0	●	Prostitution Offenses	0	0	●
Destruction/Damage/Vandalism	12	29	↓	Robbery	0	0	●
Disorderly Conduct	2	5	↓	Sex Offenses	6	4	↑
Driving Under the Influence	17	12	↑	Sex Offenses, Nonforcible	0	0	●
Drug Equipment Violations	10	6	↑	Stolen Property Offenses	3	2	↑
Drug/Narcotic Violations	13	8	↑	Trespass of Real Property	4	2	↑
Drunkenness	0	0	●	Weapon Law Violations	2	2	●
Embezzlement	1	0	↑	CFS Status	Q3	3yr Avg	Up/Down
Extortion/Blackmail	1	2	↓	Dispatched	768	783	↓
Family Offenses (Nonviolent)	2	4	↓	Initiated	1,269	942	↑
Fraud Offenses	30	77	↓	Unspecified	1,268	1,005	↑
Gambling Offenses	0	0	●	Total	3,305	2,730	↑

Note: Initiated CFS are defined by whether the created date and time listed in the CFS match the on scene date and time entered by dispatch. Additionally, follow up and assignment CFS types are included in this category. Dispatched CFS are defined by whether an on scene time is listed in the CFS, and the CFS is not initially defined as initiated. Unspecified CFS include CFS with no on scene date and time information.

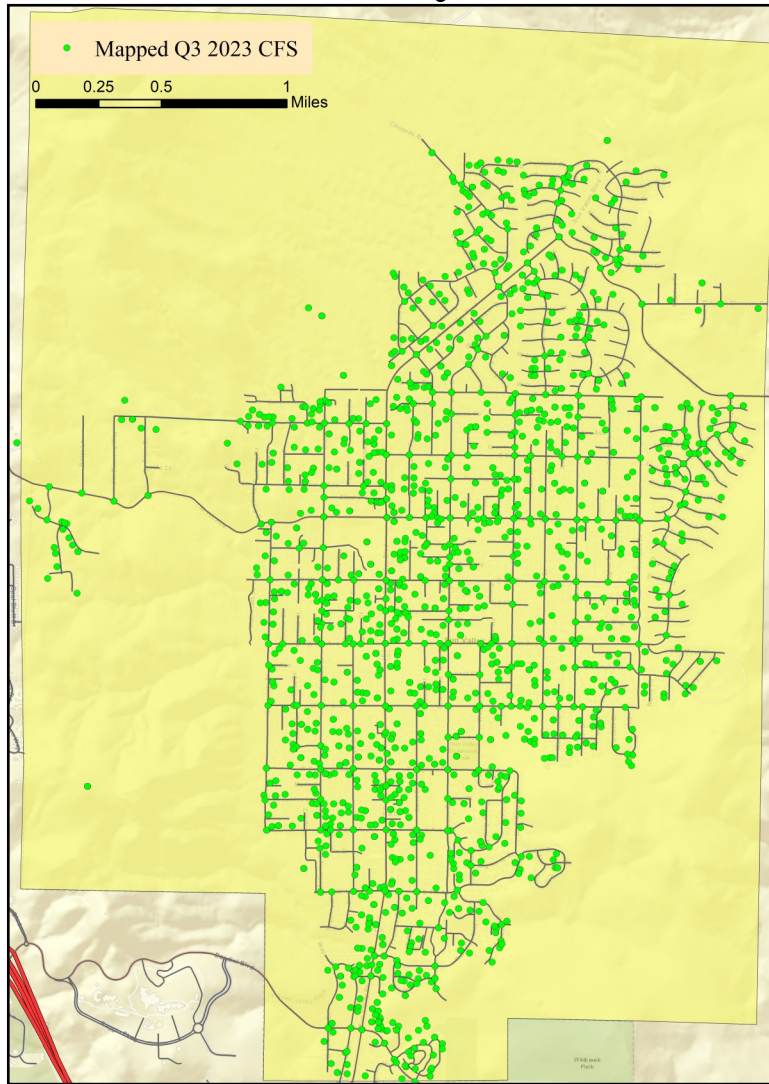
Spanish Springs CAB



Offense Categories	Q3	3yr Avg	Up/Down	Offense Categories	Q3	3yr Avg	Up/Down
All Other Offenses	25	16	↑	Homicide Offenses	0	0	●
Animal Cruelty	0	0	●	Human Trafficking Offenses	0	0	●
Arson	0	1	↓	Kidnapping/Abduction	1	1	●
Assault Offenses	29	19	↑	Larceny/Theft Offenses	8	22	↓
Bad Checks	0	0	●	Liquor Law Violations	2	1	↑
Bribery	0	0	●	Motor Vehicle Theft	4	4	●
Burglary	5	7	↓	Peeping Tom	0	0	●
Counterfeiting/Forgery	0	2	↓	Pornography/Obscene Material	0	1	↓
Curfew/Loitering/Vagrancy	0	0	●	Prostitution Offenses	0	0	●
Destruction/Damage/Vandalism	19	18	↑	Robbery	0	1	↓
Disorderly Conduct	1	2	↓	Sex Offenses	5	3	↑
Driving Under the Influence	9	8	↑	Sex Offenses, Nonforcible	0	0	●
Drug Equipment Violations	1	4	↓	Stolen Property Offenses	0	3	↓
Drug/Narcotic Violations	2	6	↓	Trespass of Real Property	4	4	●
Drunkness	0	0	●	Weapon Law Violations	0	2	↓
Embezzlement	3	3	●	CFS Status	Q3	3yr Avg	Up/Down
Extortion/Blackmail	1	1	●	Dispatched	499	493	↑
Family Offenses (Nonviolent)	4	2	↑	Initiated	437	418	↑
Fraud Offenses	13	48	↓	Unspecified	715	618	↑
Gambling Offenses	0	0	●	Total	1,651	1,529	↑

Note: Initiated CFS are defined by whether the created date and time listed in the CFS match the on scene date and time entered by dispatch. Additionally, follow up and assignment CFS types are included in this category. Dispatched CFS are defined by whether an on scene time is listed in the CFS, and the CFS is not initially defined as initiated. Unspecified CFS include CFS with no on scene date and time information.

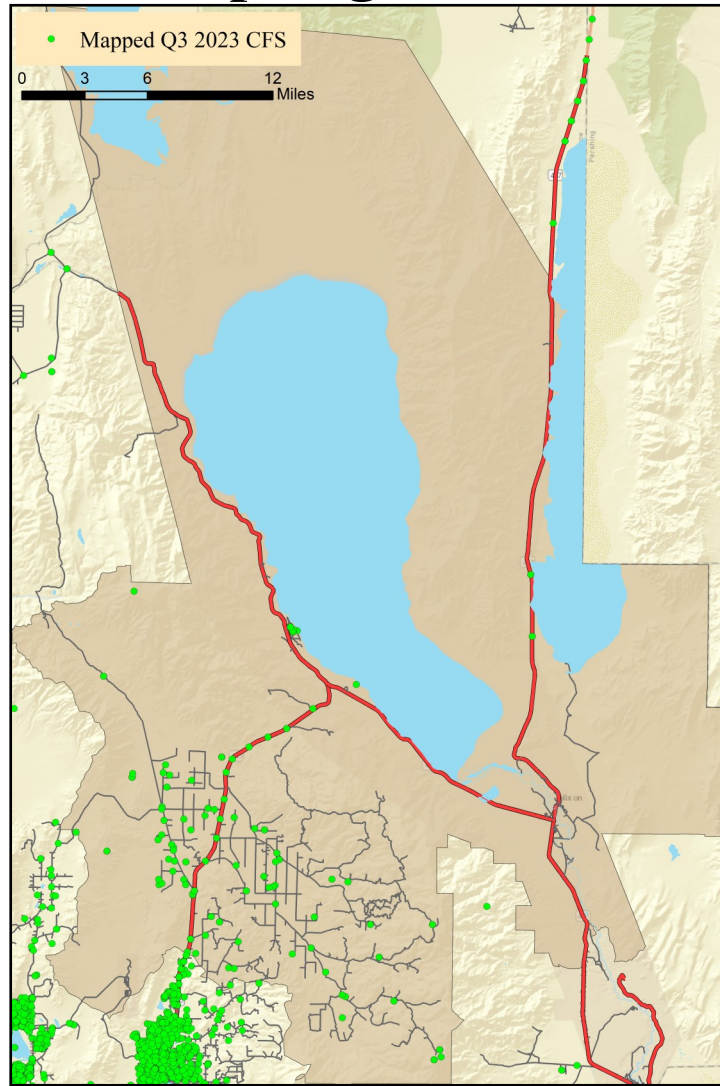
Sun Valley CAB



Offense Categories	Q3	3yr Avg	Up/Down	Offense Categories	Q3	3yr Avg	Up/Down
All Other Offenses	108	105	↑	Homicide Offenses	1	0	↑
Animal Cruelty	2	0	↑	Human Trafficking Offenses	0	0	●
Arson	1	1	●	Kidnapping/Abduction	1	1	●
Assault Offenses	65	67	↓	Larceny/Theft Offenses	35	32	↑
Bad Checks	1	0	↑	Liquor Law Violations	3	4	↓
Bribery	0	0	●	Motor Vehicle Theft	11	12	↓
Burglary	10	9	↑	Peeping Tom	0	0	●
Counterfeiting/Forgery	4	4	●	Pornography/Obscene Material	0	0	●
Curfew/Loitering/Vagrancy	0	2	↓	Prostitution Offenses	0	0	●
Destruction/Damage/Vandalism	35	30	↑	Robbery	8	2	↑
Disorderly Conduct	3	5	↓	Sex Offenses	6	10	↓
Driving Under the Influence	19	22	↓	Sex Offenses, Nonforcible	0	0	●
Drug Equipment Violations	29	22	↑	Stolen Property Offenses	8	8	●
Drug/Narcotic Violations	40	29	↑	Trespass of Real Property	8	6	↑
Drunkenness	0	0	●	Weapon Law Violations	11	10	↑
Embezzlement	1	1	●	CFS Status	Q3	3yr Avg	Up/Down
Extortion/Blackmail	1	2	↓	Dispatched	1,174	1,267	↓
Family Offenses (Nonviolent)	10	12	↓	Initiated	1,675	1,658	↑
Fraud Offenses	23	24	↓	Unspecified	978	927	↑
Gambling Offenses	0	0	●	Total	3,827	3,852	↓

Note: Initiated CFS are defined by whether the created date and time listed in the CFS match the on scene date and time entered by dispatch. Additionally, follow up and assignment CFS types are included in this category. Dispatched CFS are defined by whether an on scene time is listed in the CFS, and the CFS is not initially defined as initiated. Unspecified CFS include CFS with no on scene date and time information.

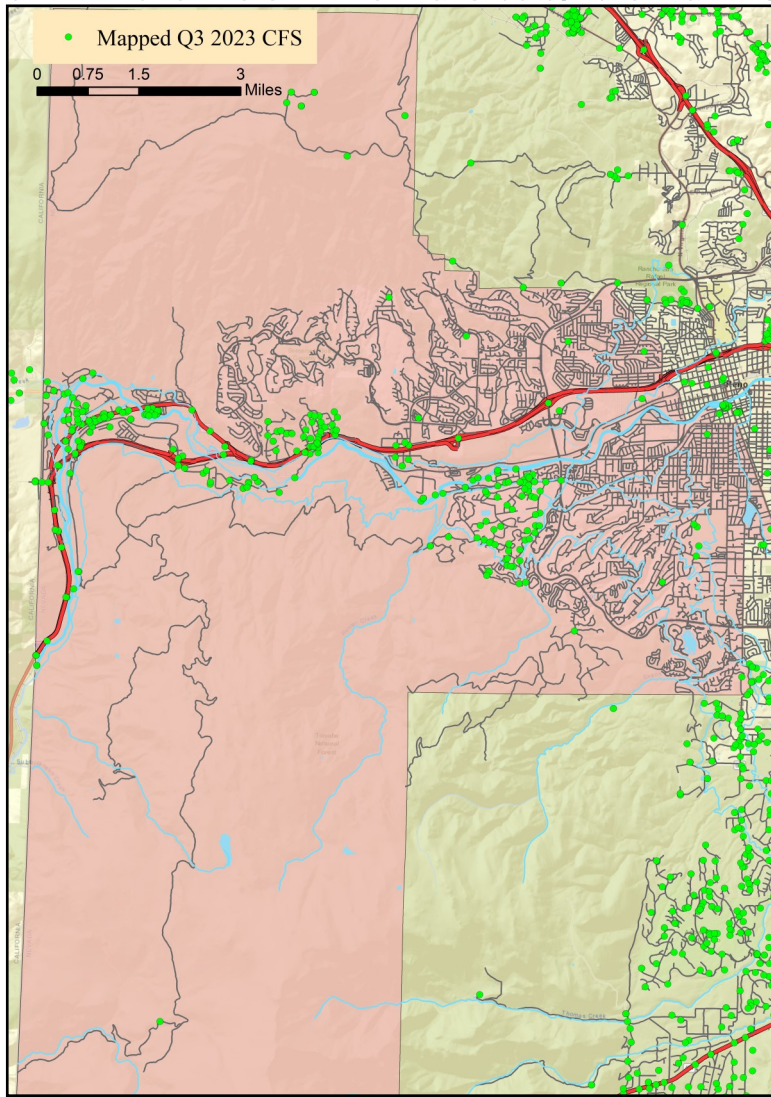
Warm Springs/Rural CAB



Offense Categories	Q3	3yr Avg	Up/Down	Offense Categories	Q3	3yr Avg	Up/Down
All Other Offenses	0	2	↓	Homicide Offenses	0	0	●
Animal Cruelty	0	0	●	Human Trafficking Offenses	0	0	●
Arson	0	0	●	Kidnapping/Abduction	0	0	●
Assault Offenses	3	1	↑	Larceny/Theft Offenses	1	1	●
Bad Checks	0	0	●	Liquor Law Violations	0	0	●
Bribery	0	0	●	Motor Vehicle Theft	1	1	●
Burglary	0	1	↓	Peeping Tom	0	0	●
Counterfeiting/Forgery	0	0	●	Pornography/Obscene Material	0	0	●
Curfew/Loitering/Vagrancy	0	0	●	Prostitution Offenses	0	0	●
Destruction/Damage/Vandalism	0	1	↓	Robbery	0	0	●
Disorderly Conduct	0	0	●	Sex Offenses	0	0	●
Driving Under the Influence	3	0	↑	Sex Offenses, Nonforcible	0	0	●
Drug Equipment Violations	1	0	↑	Stolen Property Offenses	0	0	●
Drug/Narcotic Violations	0	0	●	Trespass of Real Property	0	0	●
Drunkenness	0	0	●	Weapon Law Violations	0	1	↓
Embezzlement	0	0	●	CFS Status	Q3	3yr Avg	Up/Down
Extortion/Blackmail	0	0	●	Dispatched	54	50	↑
Family Offenses (Nonviolent)	1	0	↑	Initiated	48	62	↓
Fraud Offenses	1	3	↓	Unspecified	102	72	↑
Gambling Offenses	0	0	●	Total	204	184	↑

Note: Initiated CFS are defined by whether the created date and time listed in the CFS match the on scene date and time entered by dispatch. Additionally, follow up and assignment CFS types are included in this category. Dispatched CFS are defined by whether an on scene time is listed in the CFS, and the CFS is not initially defined as initiated. Unspecified CFS include CFS with no on scene date and time information.

West Truckee Meadows/Verdi CAB



Offense Categories	Q3	3yr Avg	Up/Down	Offense Categories	Q3	3yr Avg	Up/Down
All Other Offenses	6	15	↓	Homicide Offenses	0	0	●
Animal Cruelty	0	0	●	Human Trafficking Offenses	0	0	●
Arson	0	0	●	Kidnapping/Abduction	0	0	●
Assault Offenses	5	5	●	Larceny/Theft Offenses	14	10	↑
Bad Checks	0	0	●	Liquor Law Violations	2	0	↑
Bribery	0	0	●	Motor Vehicle Theft	0	1	↓
Burglary	4	4	●	Peeping Tom	0	0	●
Counterfeiting/Forgery	1	0	↑	Pornography/Obscene Material	0	1	↓
Curfew/Loitering/Vagrancy	0	0	●	Prostitution Offenses	0	0	●
Destruction/Damage/Vandalism	4	8	↓	Robbery	0	0	●
Disorderly Conduct	1	1	●	Sex Offenses	0	0	●
Driving Under the Influence	1	2	↓	Sex Offenses, Nonforcible	0	0	●
Drug Equipment Violations	2	6	↓	Stolen Property Offenses	0	2	↓
Drug/Narcotic Violations	3	11	↓	Trespass of Real Property	0	1	↓
Drunkness	0	0	●	Weapon Law Violations	1	2	↓
Embezzlement	0	0	●	CFS Status	Q3	3yr Avg	Up/Down
Extortion/Blackmail	0	0	●	Dispatched	159	193	↓
Family Offenses (Nonviolent)	0	0	●	Initiated	273	399	↓
Fraud Offenses	6	11	↓	Unspecified	202	178	↑
Gambling Offenses	0	0	●	Total	634	770	↓

Note: Initiated CFS are defined by whether the created date and time listed in the CFS match the on scene date and time entered by dispatch. Additionally, follow up and assignment CFS types are included in this category. Dispatched CFS are defined by whether an on scene time is listed in the CFS, and the CFS is not initially defined as initiated. Unspecified CFS include CFS with no on scene date and time information.