

# Washoe County Sheriff's Office

## CAB Data

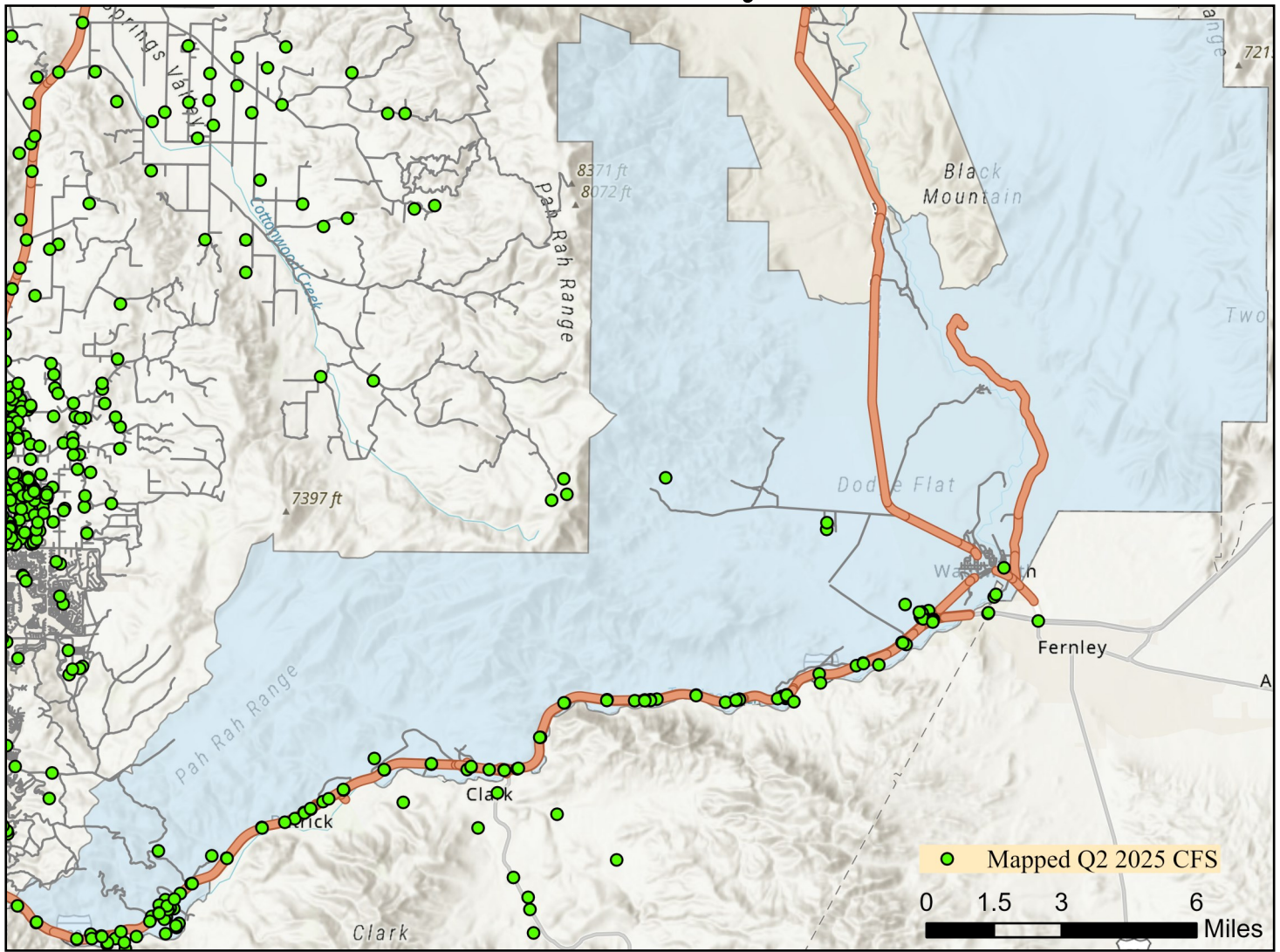
### Quarter 2 2025



Note: Calls for service (CFS) and case data reflect WCSO jurisdictions. CFS and cases are mapped with useable coordinates only.

Published: 7/10/2025

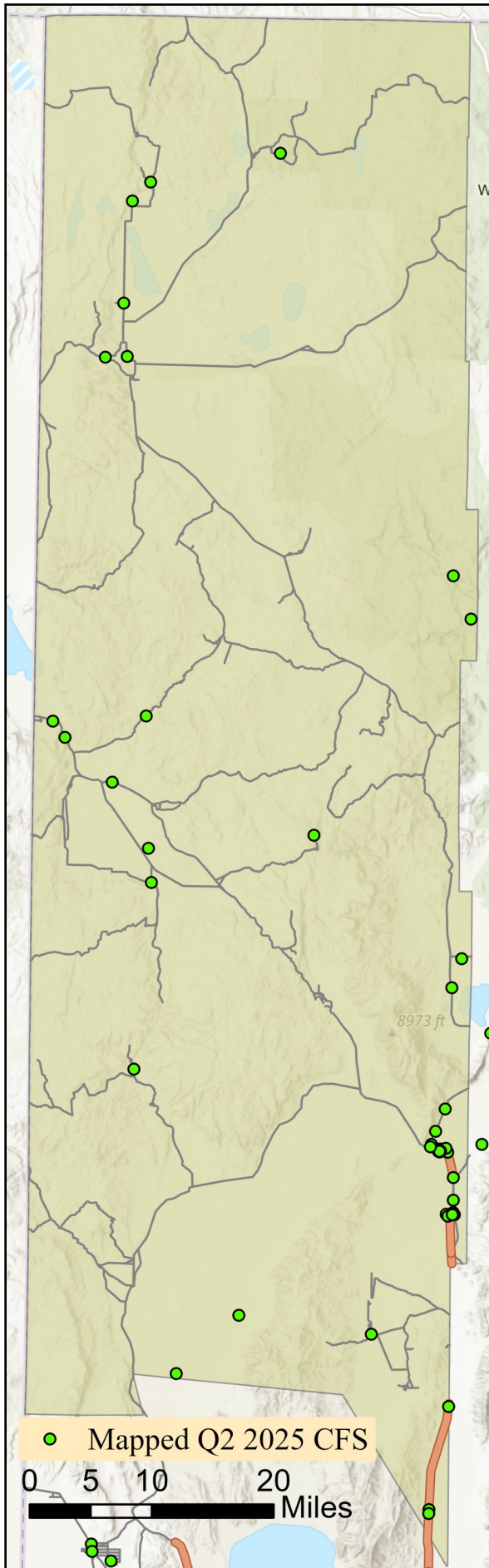
# East Truckee Canyon CAB



Offense Categories	Q2	3yr Avg	Up/Down	Offense Categories	Q2	3yr Avg	Up/Down
All Other Offenses	0	3	↓	Homicide Offenses	0	0	●
Animal Cruelty	0	0	●	Human Trafficking Offenses	0	0	●
Arson	1	0	↑	Kidnapping/Abduction	1	0	↑
Assault Offenses	0	1	↓	Larceny/Theft Offenses	2	3	↓
Bad Checks	0	0	●	Liquor Law Violations	0	0	●
Bribery	0	0	●	Motor Vehicle Theft	1	1	●
Burglary	1	1	●	Peeping Tom	0	0	●
Counterfeiting/Forgery	0	0	●	Pornography/Obscene Material	0	0	●
Curfew/Loitering/Vagrancy	0	0	●	Prostitution Offenses	0	0	●
Destruction/Damage/Vandalism	1	1	●	Robbery	0	0	●
Disorderly Conduct	0	0	●	Sex Offenses	1	0	↑
Driving Under the Influence	0	0	●	Sex Offenses, Nonforcible	0	0	●
Drug Equipment Violations	0	1	↓	Stolen Property Offenses	0	0	●
Drug/Narcotic Violations	0	5	↓	Trespass of Real Property	0	0	●
Drunkenness	0	0	●	Weapon Law Violations	0	1	↓
Embezzlement	0	0	●	<b>CFS Status</b>	<b>Q2</b>	<b>3yr Avg</b>	<b>Up/Down</b>
Extortion/Blackmail	0	0	●	Dispatched	75	61	↑
Family Offenses (Nonviolent)	0	0	●	Initiated	84	369	↓
Fraud Offenses	0	0	●	Unspecified	410	193	↑
Gambling Offenses	0	0	●	Total	569	623	↓

**Note:** Initiated CFS are defined by whether the created date and time listed in the CFS match the on scene date and time entered by dispatch. Additionally, follow up and assignment CFS types are included in this category. Dispatched CFS are defined by whether an on scene time is listed in the CFS, and the CFS is not initially defined as initiated. Unspecified CFS include CFS with no on scene date and time information.

# Gerlach/Empire CAB

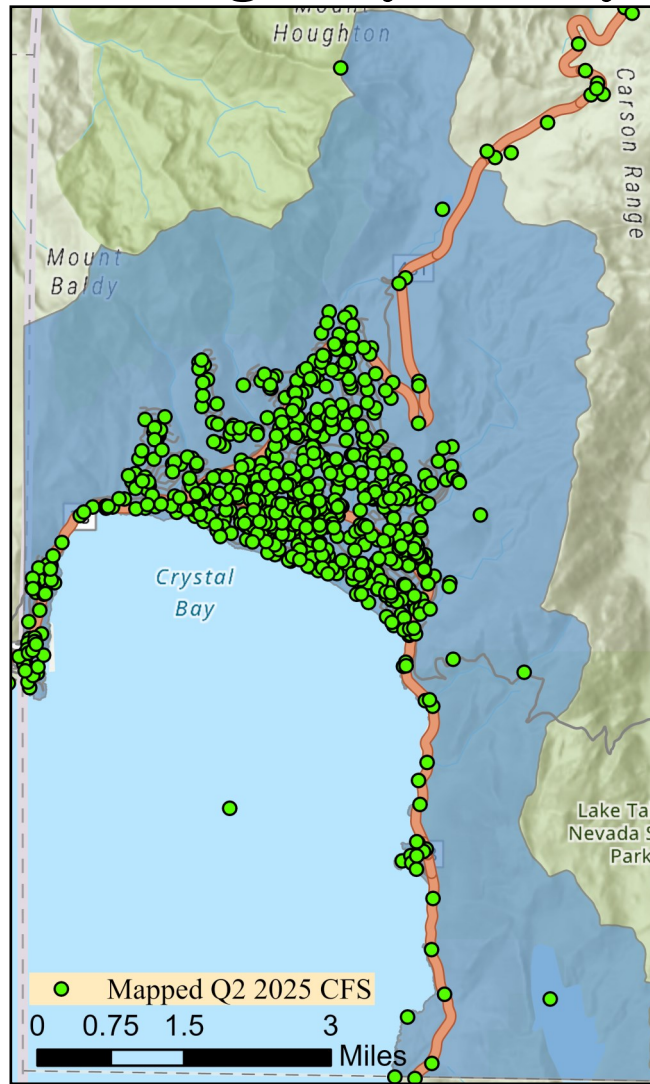


Offense Categories	Q2	3yr Avg	Up/Down
All Other Offenses	1	1	●
Animal Cruelty	0	0	●
Arson	0	0	●
Assault Offenses	0	2	↓
Bad Checks	0	0	●
Bribery	0	0	●
Burglary	0	0	●
Counterfeiting/Forgery	0	0	●
Curfew/Loitering/Vagrancy	0	0	●
Destruction/Damage/Vandalism	1	0	↑
Disorderly Conduct	1	0	↑
Driving Under the Influence	0	0	●
Drug Equipment Violations	0	0	●
Drug/Narcotic Violations	0	0	●
Drunkenness	0	0	●
Embezzlement	1	1	●
Extortion/Blackmail	0	0	●
Family Offenses (Nonviolent)	0	0	●
Fraud Offenses	0	0	●
Gambling Offenses	0	0	●
Offense Categories	Q2	3yr Avg	Up/Down
Homicide Offenses	0	0	●
Human Trafficking Offenses	0	0	●
Kidnapping/Abduction	0	0	●
Larceny/Theft Offenses	1	1	●
Liquor Law Violations	0	0	●
Motor Vehicle Theft	0	0	●
Peeping Tom	0	0	●
Pornography/Obscene Material	0	0	●
Prostitution Offenses	0	0	●
Robbery	0	0	●
Sex Offenses	0	0	●
Sex Offenses, Nonforcible	0	0	●
Stolen Property Offenses	0	0	●
Trespass of Real Property	1	0	↑
Weapon Law Violations	0	1	↓
CFS Status	Q2	3yr Avg	Up/Down
Dispatched	21	24	↓
Initiated	47	142	↓
Unspecified	22	26	↓
Total	90	192	↓

**Note:** Initiated CFS are defined by whether the created date and time listed in the CFS match the on scene date and time entered by dispatch. Additionally, follow up and assignment CFS types are included in this category. Dispatched CFS are defined by whether an on scene time is listed in the CFS, and the CFS is not initially defined as initiated. Unspecified CFS include CFS with no on scene date and time information.



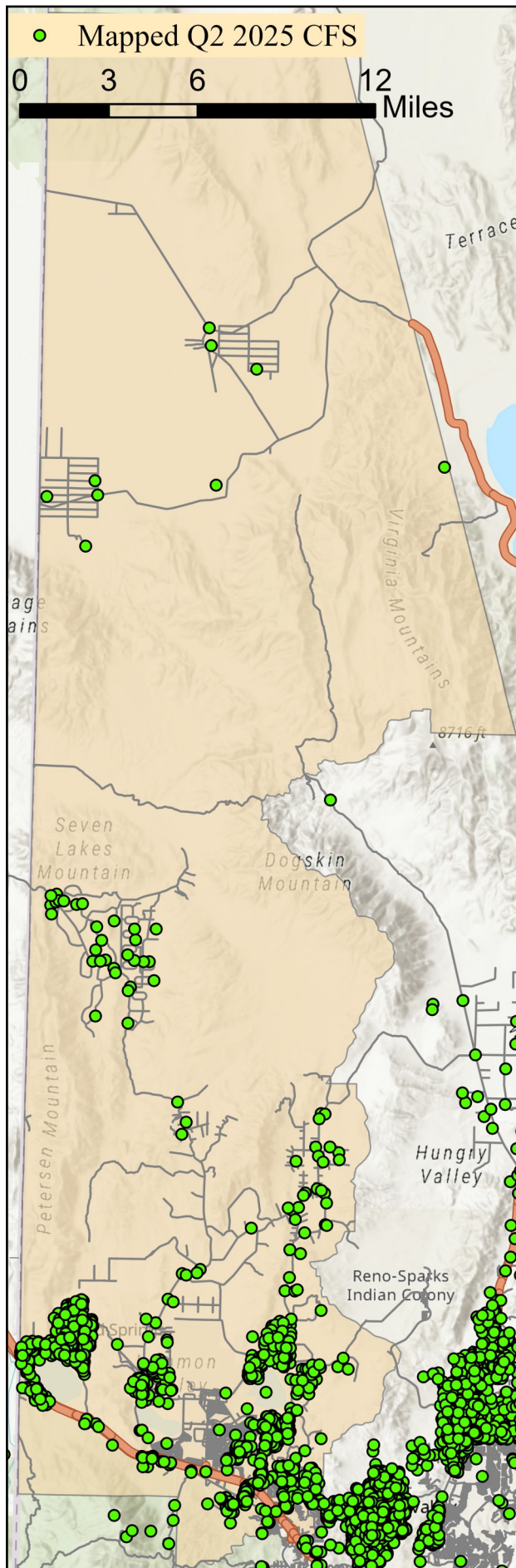
# Incline Village/Crystal Bay CAB



Offense Categories	Q2	3yr Avg	Up/Down	Offense Categories	Q2	3yr Avg	Up/Down
All Other Offenses	12	11	↑	Homicide Offenses	1	0	↑
Animal Cruelty	0	0	●	Human Trafficking Offenses	0	0	●
Arson	0	0	●	Kidnapping/Abduction	0	1	↓
Assault Offenses	13	12	↑	Larceny/Theft Offenses	4	9	↓
Bad Checks	0	0	●	Liquor Law Violations	0	1	↓
Bribery	0	0	●	Motor Vehicle Theft	1	0	↑
Burglary	2	2	●	Peeping Tom	0	0	●
Counterfeiting/Forgery	1	0	↑	Pornography/Obscene Material	0	0	●
Curfew/Loitering/Vagrancy	0	0	●	Prostitution Offenses	1	1	●
Destruction/Damage/Vandalism	1	6	↓	Robbery	0	0	●
Disorderly Conduct	1	0	↑	Sex Offenses	0	4	↓
Driving Under the Influence	15	3	↑	Sex Offenses, Nonforcible	0	0	●
Drug Equipment Violations	1	3	↓	Stolen Property Offenses	0	1	↓
Drug/Narcotic Violations	2	4	↓	Trespass of Real Property	2	2	●
Drunkenness	0	0	●	Weapon Law Violations	0	0	●
Embezzlement	0	1	↓	<b>CFS Status</b>	<b>Q2</b>	<b>3yr Avg</b>	<b>Up/Down</b>
Extortion/Blackmail	0	1	↓	Dispatched	457	578	↓
Family Offenses (Nonviolent)	0	2	↓	Initiated	2,268	1,855	↑
Fraud Offenses	9	6	↑	Unspecified	574	700	↓
Gambling Offenses	0	0	●	Total	3,299	3,133	↑

**Note:** Initiated CFS are defined by whether the created date and time listed in the CFS match the on scene date and time entered by dispatch. Additionally, follow up and assignment CFS types are included in this category. Dispatched CFS are defined by whether an on scene time is listed in the CFS, and the CFS is not initially defined as initiated. Unspecified CFS include CFS with no on scene date and time information.

# North Valleys CAB



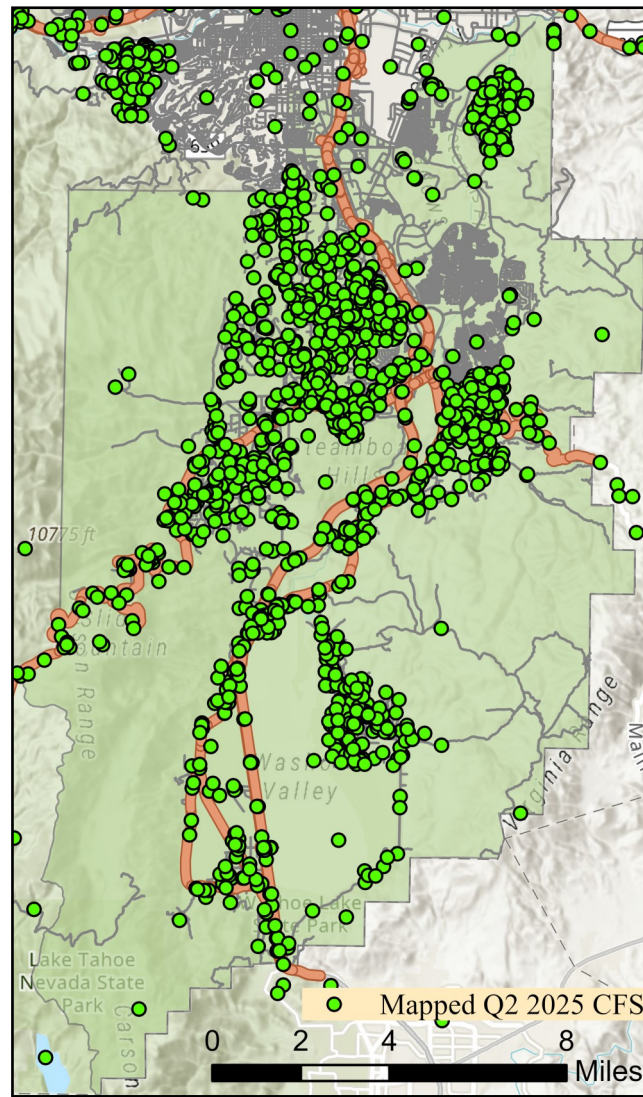
Offense Categories	Q2	3yr Avg	Up/Down
All Other Offenses	43	56	↓
Animal Cruelty	0	0	●
Arson	2	2	●
Assault Offenses	44	42	↑
Bad Checks	0	0	●
Bribery	0	0	●
Burglary	5	8	↓
Counterfeiting/Forgery	1	2	↓
Curfew/Loitering/Vagrancy	0	3	↓
Destruction/Damage/Vandalism	22	30	↓
Disorderly Conduct	4	5	↓
Driving Under the Influence	13	15	↓
Drug Equipment Violations	7	13	↓
Drug/Narcotic Violations	13	15	↓
Drunkenness	0	0	●
Embezzlement	1	0	↑
Extortion/Blackmail	3	2	↑
Family Offenses (Nonviolent)	4	8	↓
Fraud Offenses	19	29	↓
Gambling Offenses	0	0	●

Offense Categories	Q2	3yr Avg	Up/Down
Homicide Offenses	0	1	↓
Human Trafficking Offenses	0	0	●
Kidnapping/Abduction	1	2	↓
Larceny/Theft Offenses	10	28	↓
Liquor Law Violations	1	3	↓
Motor Vehicle Theft	5	5	●
Peeping Tom	0	0	●
Pornography/Obscene Material	1	2	↓
Prostitution Offenses	0	0	●
Robbery	0	2	↓
Sex Offenses	6	8	↓
Sex Offenses, Nonforcible	0	0	●
Stolen Property Offenses	1	7	↓
Trespass of Real Property	2	4	↓
Weapon Law Violations	6	7	↓
CFS Status	Q2	3yr Avg	Up/Down
Dispatched	697	768	↓
Initiated	1,158	834	↑
Unspecified	1,041	889	↑
Total	2,896	2,491	↑

**Note:** Initiated CFS are defined by whether the created date and time listed in the CFS match the on scene date and time entered by dispatch. Additionally, follow up and assignment CFS types are included in this category. Dispatched CFS are defined by whether an on scene time is listed in the CFS, and the CFS is not initially defined as initiated. Unspecified CFS include CFS with no on scene date and time information.



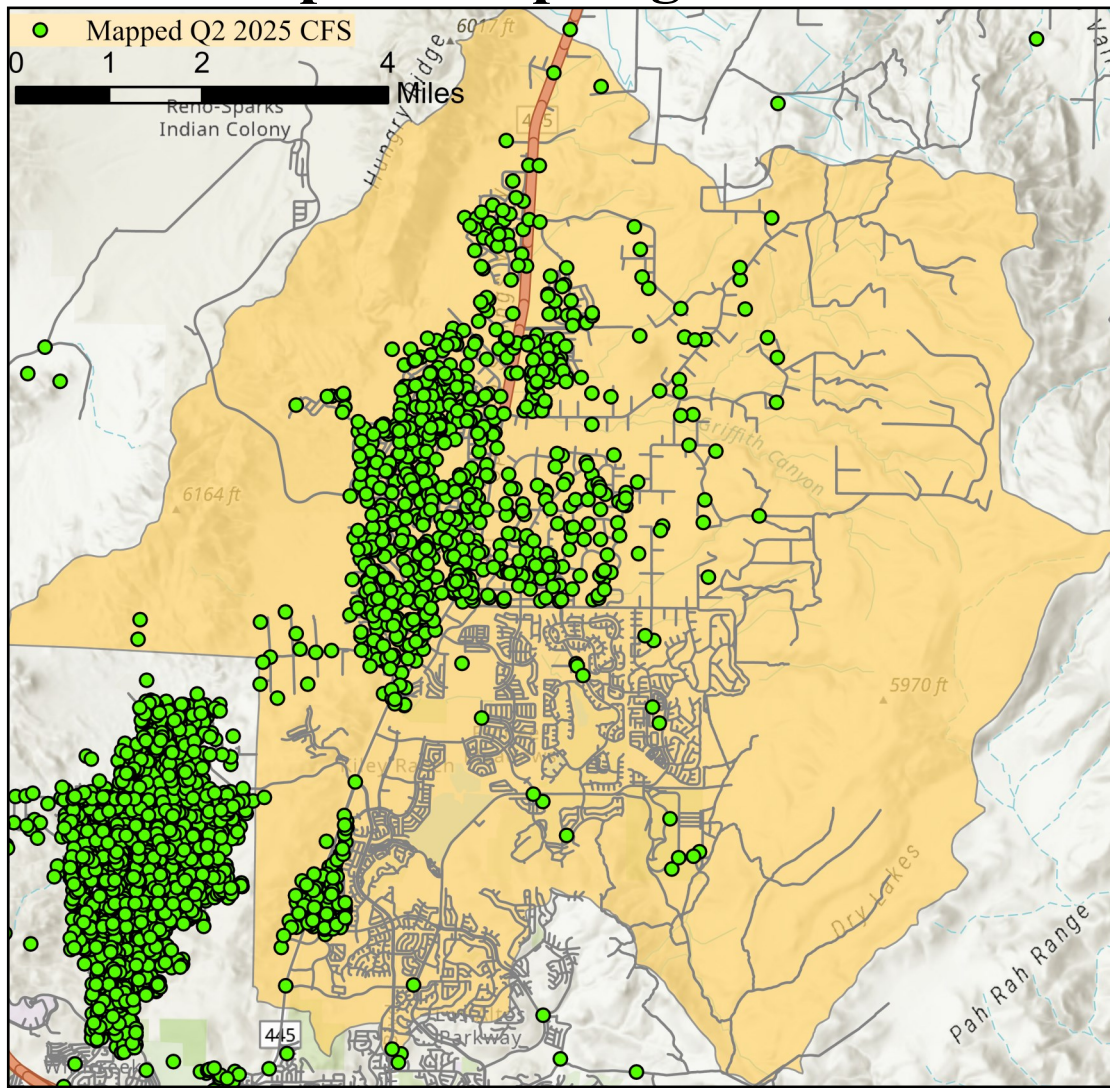
# South Truckee Meadows/Washoe Valley CAB



Offense Categories	Q2	3yr Avg	Up/Down	Offense Categories	Q2	3yr Avg	Up/Down
All Other Offenses	27	44	↓	Homicide Offenses	1	0	↑
Animal Cruelty	0	1	↓	Human Trafficking Offenses	0	0	●
Arson	0	1	↓	Kidnapping/Abduction	1	1	●
Assault Offenses	29	29	●	Larceny/Theft Offenses	18	30	↓
Bad Checks	0	0	●	Liquor Law Violations	4	2	↑
Bribery	0	0	●	Motor Vehicle Theft	3	4	↓
Burglary	3	9	↓	Peeping Tom	0	1	↓
Counterfeiting/Forgery	5	5	●	Pornography/Obscene Material	2	2	●
Curfew/Loitering/Vagrancy	0	0	●	Prostitution Offenses	0	0	●
Destruction/Damage/Vandalism	22	21	↑	Robbery	1	2	↓
Disorderly Conduct	6	2	↑	Sex Offenses	3	7	↓
Driving Under the Influence	16	14	↑	Sex Offenses, Nonforcible	1	0	↑
Drug Equipment Violations	5	12	↓	Stolen Property Offenses	3	3	●
Drug/Narcotic Violations	6	16	↓	Trespass of Real Property	5	2	↑
Drunkenness	0	0	●	Weapon Law Violations	2	6	↓
Embezzlement	0	0	●	<b>CFS Status</b>	<b>Q2</b>	<b>3yr Avg</b>	<b>Up/Down</b>
Extortion/Blackmail	2	1	↑	Dispatched	680	732	↓
Family Offenses (Nonviolent)	5	7	↓	Initiated	1,249	1,031	↑
Fraud Offenses	25	28	↓	Unspecified	1,534	1,142	↑
Gambling Offenses	0	0	●	Total	3,463	2,905	↑

**Note:** Initiated CFS are defined by whether the created date and time listed in the CFS match the on scene date and time entered by dispatch. Additionally, follow up and assignment CFS types are included in this category. Dispatched CFS are defined by whether an on scene time is listed in the CFS, and the CFS is not initially defined as initiated. Unspecified CFS include CFS with no on scene date and time information.

# Spanish Springs CAB

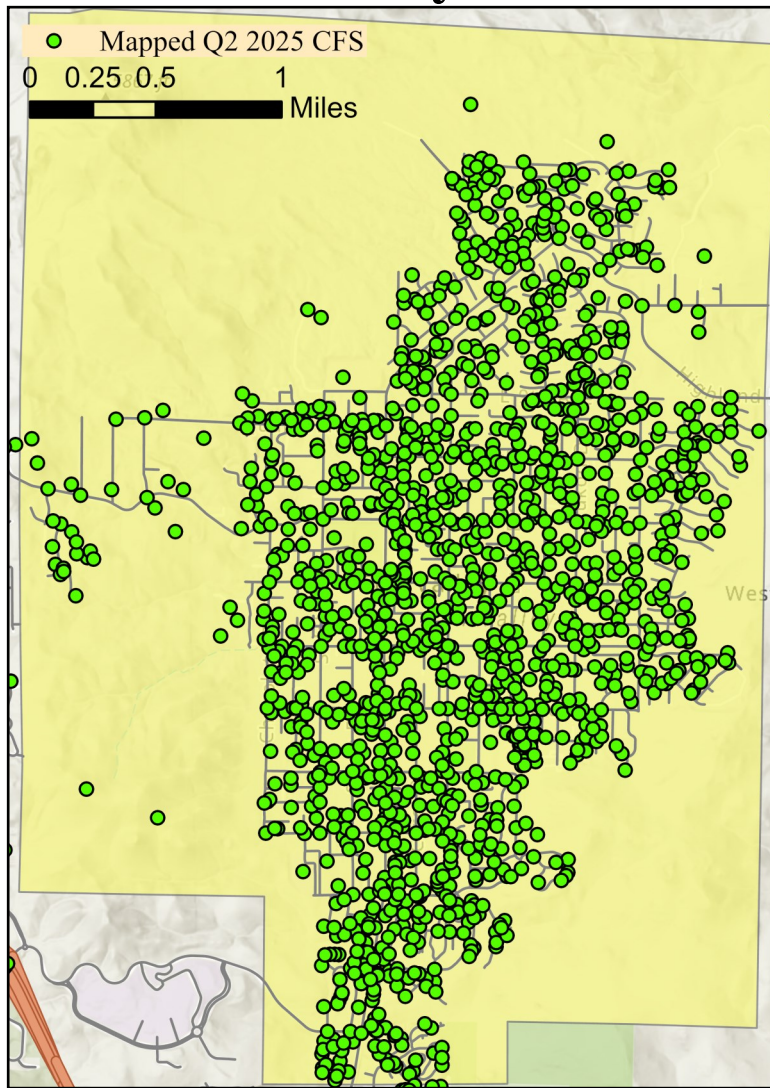


Offense Categories	Q2	3yr Avg	Up/Down	Offense Categories	Q2	3yr Avg	Up/Down
All Other Offenses	21	14	↑	Homicide Offenses	1	0	↑
Animal Cruelty	0	2	↓	Human Trafficking Offenses	0	0	●
Arson	0	0	●	Kidnapping/Abduction	0	2	↓
Assault Offenses	17	21	↓	Larceny/Theft Offenses	7	19	↓
Bad Checks	0	0	●	Liquor Law Violations	2	1	↑
Bribery	0	0	●	Motor Vehicle Theft	1	4	↓
Burglary	6	8	↓	Peeping Tom	0	0	●
Counterfeiting/Forgery	3	2	↑	Pornography/Obscene Material	4	1	↑
Curfew/Loitering/Vagrancy	0	1	↓	Prostitution Offenses	0	1	↓
Destruction/Damage/Vandalism	20	18	↑	Robbery	0	1	↓
Disorderly Conduct	7	3	↑	Sex Offenses	3	3	●
Driving Under the Influence	9	6	↑	Sex Offenses, Nonforcible	0	1	↓
Drug Equipment Violations	2	5	↓	Stolen Property Offenses	1	0	↑
Drug/Narcotic Violations	1	7	↓	Trespass of Real Property	4	3	↑
Drunkenness	0	0	●	Weapon Law Violations	2	3	↓
Embezzlement	0	2	↓	<b>CFS Status</b>	<b>Q2</b>	<b>3yr Avg</b>	<b>Up/Down</b>
Extortion/Blackmail	1	2	↓	Dispatched	483	483	●
Family Offenses (Nonviolent)	1	3	↓	Initiated	759	417	↑
Fraud Offenses	19	22	↓	Unspecified	838	705	↑
Gambling Offenses	0	0	●	Total	2,080	1,605	↑

**Note:** Initiated CFS are defined by whether the created date and time listed in the CFS match the on scene date and time entered by dispatch. Additionally, follow up and assignment CFS types are included in this category. Dispatched CFS are defined by whether an on scene time is listed in the CFS, and the CFS is not initially defined as initiated. Unspecified CFS include CFS with no on scene date and time information.



# Sun Valley CAB

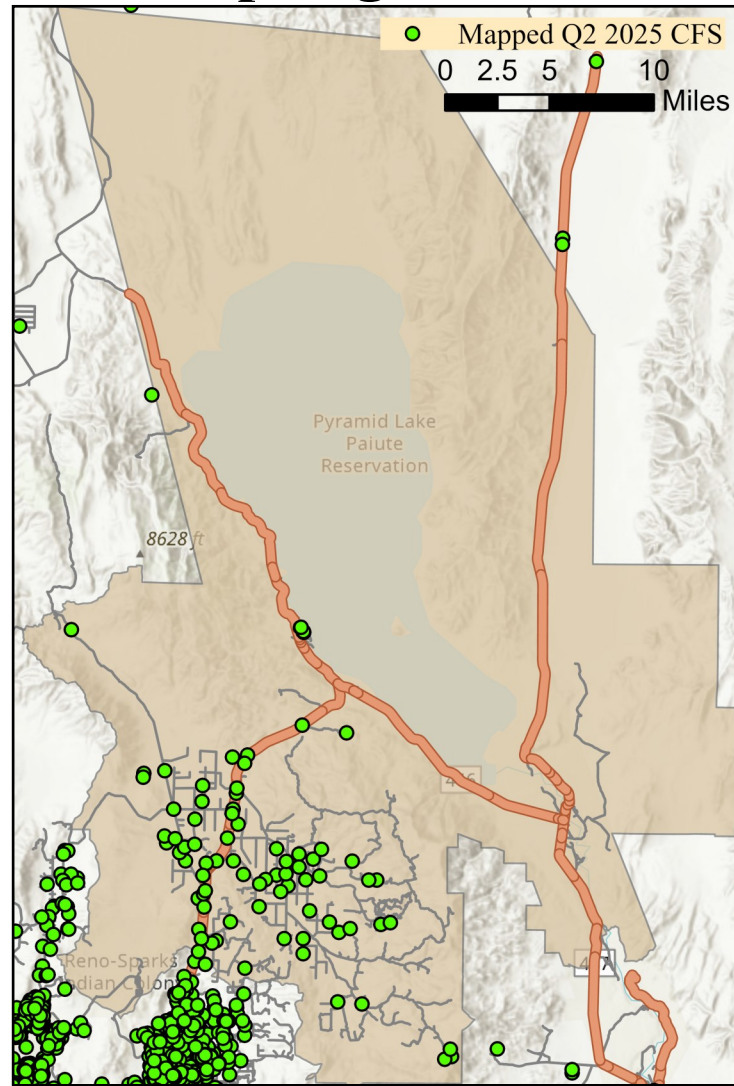


Offense Categories	Q2	3yr Avg	Up/Down	Offense Categories	Q2	3yr Avg	Up/Down
All Other Offenses	92	105	↓	Homicide Offenses	2	1	↑
Animal Cruelty	0	1	↓	Human Trafficking Offenses	0	0	●
Arson	1	1	●	Kidnapping/Abduction	4	2	↑
Assault Offenses	71	65	↑	Larceny/Theft Offenses	36	31	↑
Bad Checks	0	0	●	Liquor Law Violations	1	3	↓
Bribery	0	0	●	Motor Vehicle Theft	8	10	↓
Burglary	3	12	↓	Peeping Tom	0	1	↓
Counterfeiting/Forgery	1	2	↓	Pornography/Obscene Material	1	1	●
Curfew/Loitering/Vagrancy	0	4	↓	Prostitution Offenses	0	0	●
Destruction/Damage/Vandalism	25	36	↓	Robbery	1	3	↓
Disorderly Conduct	8	6	↑	Sex Offenses	7	7	●
Driving Under the Influence	15	15	●	Sex Offenses, Nonforcible	0	1	↓
Drug Equipment Violations	20	25	↓	Stolen Property Offenses	8	5	↑
Drug/Narcotic Violations	17	28	↓	Trespass of Real Property	5	7	↓
Drunkenness	0	0	●	Weapon Law Violations	5	8	↓
Embezzlement	2	2	●	<b>CFS Status</b>	<b>Q2</b>	<b>3yr Avg</b>	<b>Up/Down</b>
Extortion/Blackmail	5	3	↑	Dispatched	1,174	1,055	↑
Family Offenses (Nonviolent)	5	10	↓	Initiated	1,649	1,445	↑
Fraud Offenses	19	25	↓	Unspecified	1,228	869	↑
Gambling Offenses	0	0	●	Total	4,051	3,368	↑

**Note:** Initiated CFS are defined by whether the created date and time listed in the CFS match the on scene date and time entered by dispatch. Additionally, follow up and assignment CFS types are included in this category. Dispatched CFS are defined by whether an on scene time is listed in the CFS, and the CFS is not initially defined as initiated. Unspecified CFS include CFS with no on scene date and time information.



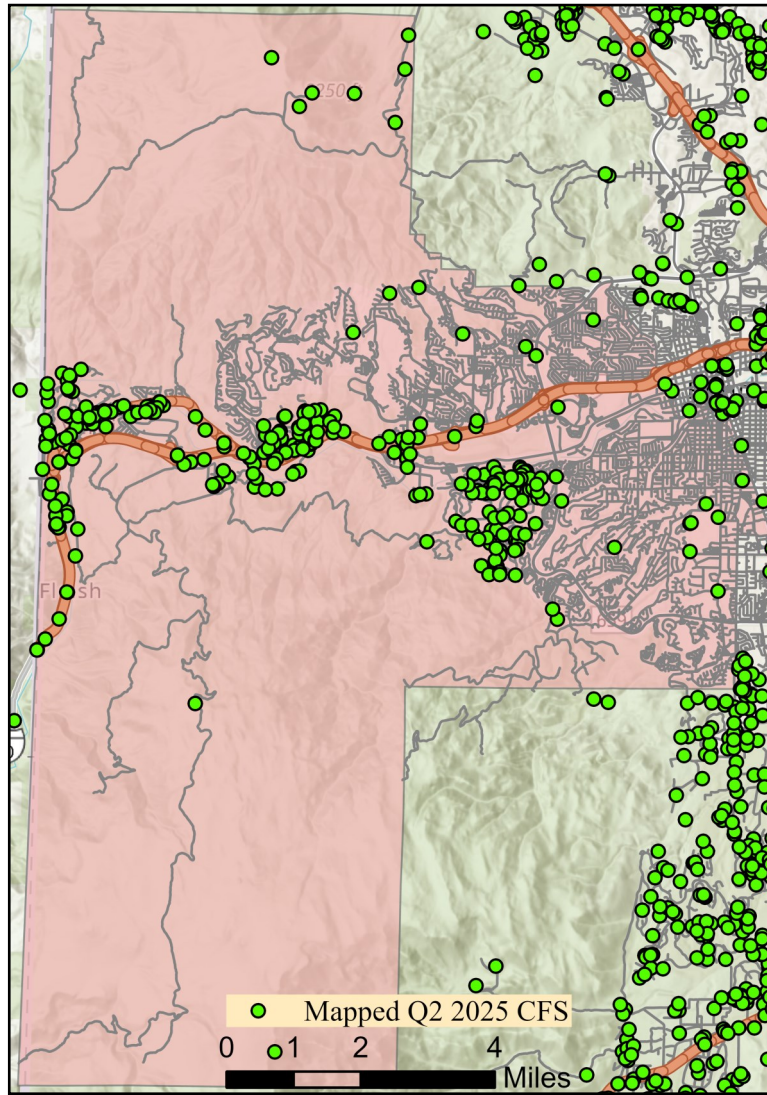
# Warm Springs/Rural CAB



Offense Categories	Q2	3yr Avg	Up/Down	Offense Categories	Q2	3yr Avg	Up/Down
All Other Offenses	1	2	↓	Homicide Offenses	0	0	●
Animal Cruelty	0	0	●	Human Trafficking Offenses	0	0	●
Arson	0	0	●	Kidnapping/Abduction	0	0	●
Assault Offenses	2	3	↓	Larceny/Theft Offenses	0	2	↓
Bad Checks	0	0	●	Liquor Law Violations	0	0	●
Bribery	0	0	●	Motor Vehicle Theft	0	2	↓
Burglary	1	1	●	Peeping Tom	0	0	●
Counterfeiting/Forgery	0	0	●	Pornography/Obscene Material	0	0	●
Curfew/Loitering/Vagrancy	0	0	●	Prostitution Offenses	0	0	●
Destruction/Damage/Vandalism	2	1	↑	Robbery	0	0	●
Disorderly Conduct	0	0	●	Sex Offenses	0	1	↓
Driving Under the Influence	0	0	●	Sex Offenses, Nonforcible	0	0	●
Drug Equipment Violations	0	0	●	Stolen Property Offenses	0	0	●
Drug/Narcotic Violations	0	1	↓	Trespass of Real Property	1	1	●
Drunkenness	0	0	●	Weapon Law Violations	0	1	↓
Embezzlement	0	1	↓	<b>CFS Status</b>	<b>Q2</b>	<b>3yr Avg</b>	<b>Up/Down</b>
Extortion/Blackmail	0	0	●	Dispatched	42	47	↓
Family Offenses (Nonviolent)	0	1	↓	Initiated	66	59	↑
Fraud Offenses	1	3	↓	Unspecified	89	102	↓
Gambling Offenses	0	0	●	Total	197	208	↓

**Note:** Initiated CFS are defined by whether the created date and time listed in the CFS match the on scene date and time entered by dispatch. Additionally, follow up and assignment CFS types are included in this category. Dispatched CFS are defined by whether an on scene time is listed in the CFS, and the CFS is not initially defined as initiated. Unspecified CFS include CFS with no on scene date and time information.

# West Truckee Meadows/Verdi CAB



Offense Categories	Q2	3yr Avg	Up/Down	Offense Categories	Q2	3yr Avg	Up/Down
All Other Offenses	11	9	↑	Homicide Offenses	0	0	●
Animal Cruelty	0	0	●	Human Trafficking Offenses	0	0	●
Arson	0	0	●	Kidnapping/Abduction	0	0	●
Assault Offenses	4	4	●	Larceny/Theft Offenses	7	6	↑
Bad Checks	0	0	●	Liquor Law Violations	0	0	●
Bribery	0	0	●	Motor Vehicle Theft	0	1	↓
Burglary	5	4	↑	Peeping Tom	0	0	●
Counterfeiting/Forgery	2	1	↑	Pornography/Obscene Material	0	0	●
Curfew/Loitering/Vagrancy	0	0	●	Prostitution Offenses	0	0	●
Destruction/Damage/Vandalism	8	6	↑	Robbery	1	0	↑
Disorderly Conduct	0	2	↓	Sex Offenses	0	0	●
Driving Under the Influence	2	3	↓	Sex Offenses, Nonforcible	0	1	↓
Drug Equipment Violations	3	3	●	Stolen Property Offenses	0	2	↓
Drug/Narcotic Violations	7	8	↓	Trespass of Real Property	0	1	↓
Drunkenness	0	0	●	Weapon Law Violations	1	2	↓
Embezzlement	0	0	●	<b>CFS Status</b>	<b>Q2</b>	<b>3yr Avg</b>	<b>Up/Down</b>
Extortion/Blackmail	0	0	●	Dispatched	124	147	↓
Family Offenses (Nonviolent)	2	2	●	Initiated	541	332	↑
Fraud Offenses	6	7	↓	Unspecified	339	189	↑
Gambling Offenses	0	0	●	Total	1,004	668	↑

**Note:** Initiated CFS are defined by whether the created date and time listed in the CFS match the on scene date and time entered by dispatch. Additionally, follow up and assignment CFS types are included in this category. Dispatched CFS are defined by whether an on scene time is listed in the CFS, and the CFS is not initially defined as initiated. Unspecified CFS include CFS with no on scene date and time information.