

Washoe County Sheriff's Office

CAB Data

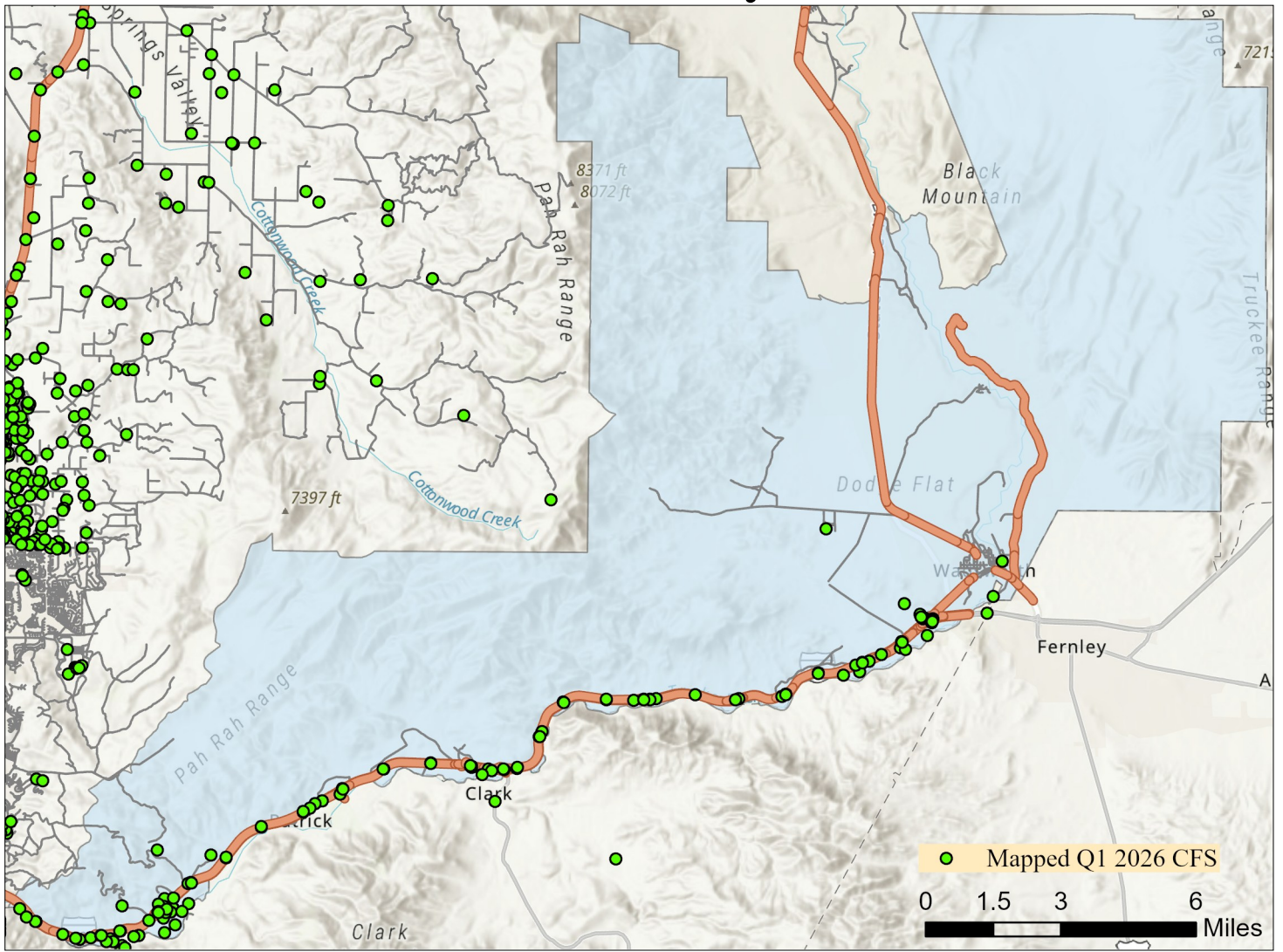
Quarter 1 2026



Note: Calls for service (CFS) and case data reflect WCSO jurisdictions. CFS and cases are mapped with useable coordinates only.

Published: 4/9/2026

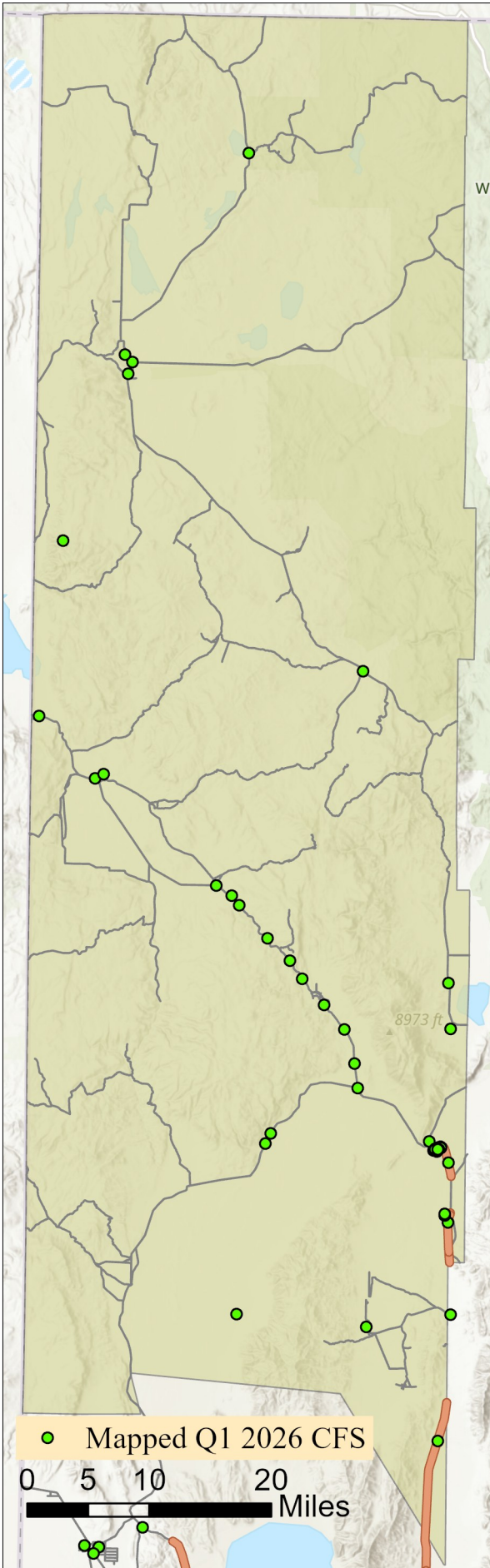
East Truckee Canyon CAB



Offense Categories	Q1	3yr Avg	Up/Down	Offense Categories	Q1	3yr Avg	Up/Down
All Other Offenses	2	1	↑	Homicide Offenses	0	0	●
Animal Cruelty	0	0	●	Human Trafficking Offenses	0	0	●
Arson	1	0	↑	Kidnapping/Abduction	0	0	●
Assault Offenses	0	1	↓	Larceny/Theft Offenses	3	2	↑
Bad Checks	0	0	●	Liquor Law Violations	0	0	●
Bribery	0	0	●	Motor Vehicle Theft	0	0	●
Burglary	0	1	↓	Peeping Tom	0	0	●
Counterfeiting/Forgery	0	0	●	Pornography/Obscene Material	0	0	●
Curfew/Loitering/Vagrancy	0	0	●	Prostitution Offenses	0	0	●
Destruction/Damage/Vandalism	1	1	●	Robbery	0	0	●
Disorderly Conduct	0	0	●	Sex Offenses	0	0	●
Driving Under the Influence	0	0	●	Sex Offenses, Nonforcible	0	0	●
Drug Equipment Violations	1	0	↑	Stolen Property Offenses	0	0	●
Drug/Narcotic Violations	2	3	↓	Trespass of Real Property	0	0	●
Drunkness	0	0	●	Weapon Law Violations	1	0	↑
Embezzlement	0	0	●	CFS Status	Q1	3yr Avg	Up/Down
Extortion/Blackmail	1	0	↑	Dispatched	57	54	↑
Family Offenses (Nonviolent)	1	1	●	Initiated	412	327	↑
Fraud Offenses	1	1	●	Unspecified	417	205	↑
Gambling Offenses	0	0	●	Total	886	586	↑

Note: Initiated CFS are defined by whether the created date and time listed in the CFS match the on scene date and time entered by dispatch. Additionally, follow up and assignment CFS types are included in this category. Dispatched CFS are defined by whether an on scene time is listed in the CFS, and the CFS is not initially defined as initiated. Unspecified CFS include CFS with no on scene date and time information.

Gerlach/Empire CAB

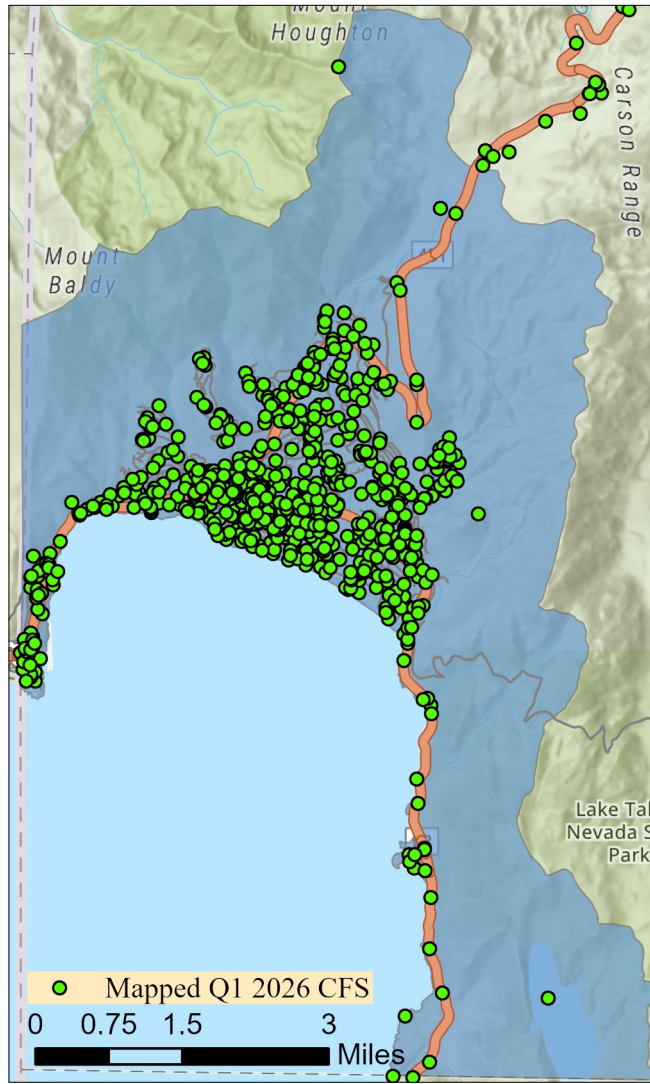


Offense Categories	Q1	3yr Avg	Up/Down
All Other Offenses	0	1	↓
Animal Cruelty	0	0	●
Arson	0	0	●
Assault Offenses	0	1	↓
Bad Checks	0	0	●
Bribery	0	0	●
Burglary	0	2	↓
Counterfeiting/Forgery	0	0	●
Curfew/Loitering/Vagrancy	0	0	●
Destruction/Damage/Vandalism	0	1	↓
Disorderly Conduct	0	0	●
Driving Under the Influence	0	0	●
Drug Equipment Violations	0	1	↓
Drug/Narcotic Violations	0	1	↓
Drunkenness	0	0	●
Embezzlement	0	0	●
Extortion/Blackmail	0	0	●
Family Offenses (Nonviolent)	0	0	●
Fraud Offenses	1	0	↑
Gambling Offenses	0	0	●

Offense Categories	Q1	3yr Avg	Up/Down
Homicide Offenses	0	0	●
Human Trafficking Offenses	0	0	●
Kidnapping/Abduction	0	0	●
Larceny/Theft Offenses	0	1	↓
Liquor Law Violations	0	0	●
Motor Vehicle Theft	0	1	↓
Peeping Tom	0	0	●
Pornography/Obscene Material	0	0	●
Prostitution Offenses	0	0	●
Robbery	0	0	●
Sex Offenses	0	0	●
Sex Offenses, Nonforcible	0	0	●
Stolen Property Offenses	0	1	↓
Trespass of Real Property	0	0	●
Weapon Law Violations	0	1	↓
CFS Status	Q1	3yr Avg	Up/Down
Dispatched	20	15	↑
Initiated	46	132	↓
Unspecified	31	18	↑
Total	97	165	↓

Note: Initiated CFS are defined by whether the created date and time listed in the CFS match the on scene date and time entered by dispatch. Additionally, follow up and assignment CFS types are included in this category. Dispatched CFS are defined by whether an on scene time is listed in the CFS, and the CFS is not initially defined as initiated. Unspecified CFS include CFS with no on scene date and time information.

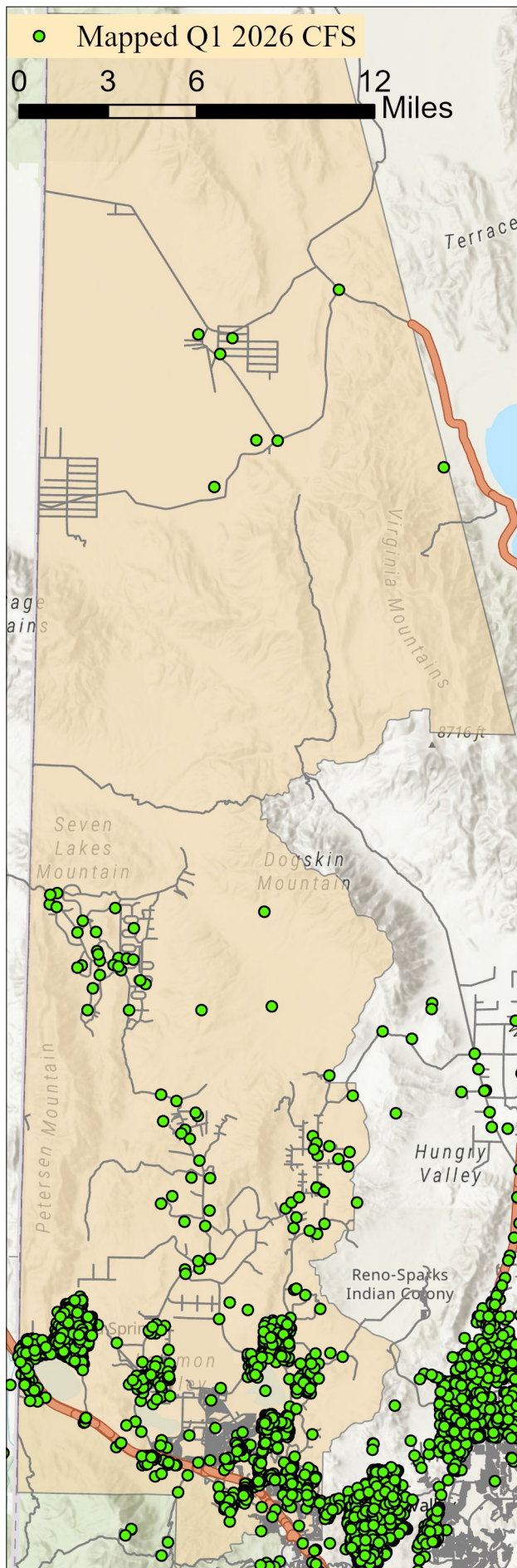
Incline Village/Crystal Bay CAB



Offense Categories	Q1	3yr Avg	Up/Down	Offense Categories	Q1	3yr Avg	Up/Down
All Other Offenses	3	14	↓	Homicide Offenses	0	0	●
Animal Cruelty	0	0	●	Human Trafficking Offenses	0	1	↓
Arson	0	0	●	Kidnapping/Abduction	0	1	↓
Assault Offenses	3	13	↓	Larceny/Theft Offenses	9	6	↑
Bad Checks	1	0	↑	Liquor Law Violations	0	1	↓
Bribery	0	0	●	Motor Vehicle Theft	0	3	↓
Burglary	3	1	↑	Peeping Tom	0	0	●
Counterfeiting/Forgery	1	1	●	Pornography/Obscene Material	0	1	↓
Curfew/Loitering/Vagrancy	0	0	●	Prostitution Offenses	0	0	●
Destruction/Damage/Vandalism	5	5	●	Robbery	0	1	↓
Disorderly Conduct	0	1	↓	Sex Offenses	0	2	↓
Driving Under the Influence	5	14	↓	Sex Offenses, Nonforcible	0	1	↓
Drug Equipment Violations	0	4	↓	Stolen Property Offenses	1	1	●
Drug/Narcotic Violations	1	4	↓	Trespass of Real Property	5	3	↑
Drunkness	0	0	●	Weapon Law Violations	0	1	↓
Embezzlement	1	1	●	CFS Status	Q1	3yr Avg	Up/Down
Extortion/Blackmail	0	0	●	Dispatched	436	515	↓
Family Offenses (Nonviolent)	0	1	↓	Initiated	2,492	1,801	↑
Fraud Offenses	11	9	↑	Unspecified	509	639	↓
Gambling Offenses	0	0	●	Total	3,437	2,955	↑

Note: Initiated CFS are defined by whether the created date and time listed in the CFS match the on scene date and time entered by dispatch. Additionally, follow up and assignment CFS types are included in this category. Dispatched CFS are defined by whether an on scene time is listed in the CFS, and the CFS is not initially defined as initiated. Unspecified CFS include CFS with no on scene date and time information.

North Valleys CAB

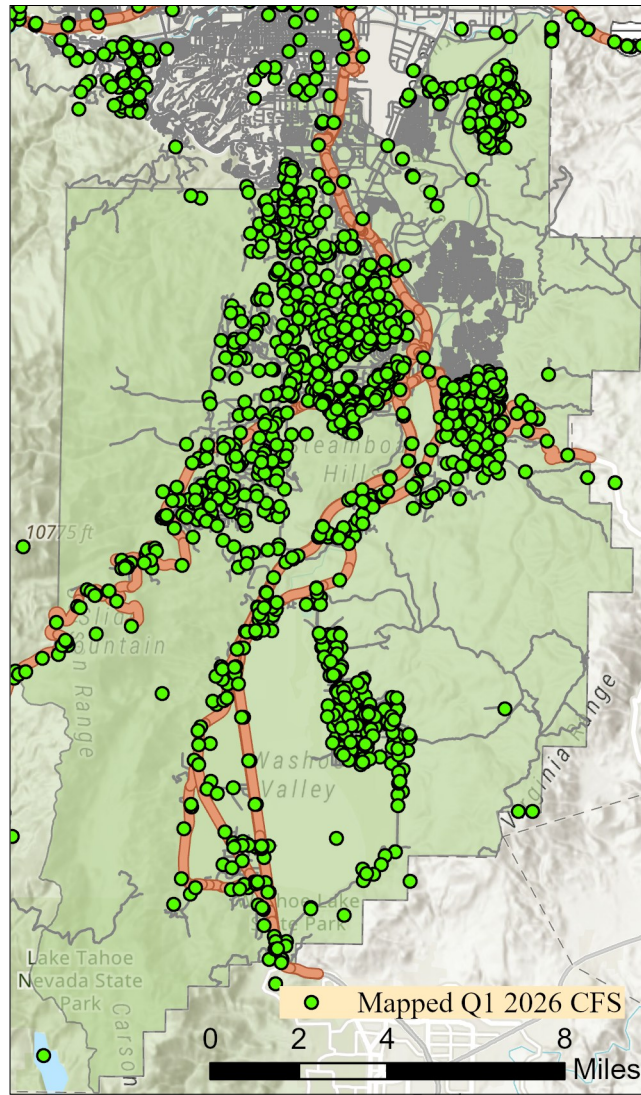


Offense Categories	Q1	3yr Avg	Up/Down
All Other Offenses	43	45	↓
Animal Cruelty	1	0	↑
Arson	0	0	●
Assault Offenses	45	32	↑
Bad Checks	0	0	●
Bribery	0	0	●
Burglary	2	9	↓
Counterfeiting/Forgery	1	3	↓
Curfew/Loitering/Vagrancy	0	0	●
Destruction/Damage/Vandalism	19	20	↓
Disorderly Conduct	5	1	↑
Driving Under the Influence	17	12	↑
Drug Equipment Violations	13	12	↑
Drug/Narcotic Violations	11	13	↓
Drunkenness	0	0	●
Embezzlement	2	1	↑
Extortion/Blackmail	1	2	↓
Family Offenses (Nonviolent)	3	6	↓
Fraud Offenses	28	25	↑
Gambling Offenses	0	0	●

Offense Categories	Q1	3yr Avg	Up/Down
Homicide Offenses	0	0	●
Human Trafficking Offenses	0	0	●
Kidnapping/Abduction	0	1	↓
Larceny/Theft Offenses	18	25	↓
Liquor Law Violations	0	1	↓
Motor Vehicle Theft	5	5	●
Peeping Tom	0	0	●
Pornography/Obscene Material	0	0	●
Prostitution Offenses	0	0	●
Robbery	0	1	↓
Sex Offenses	5	6	↓
Sex Offenses, Nonforcible	0	0	●
Stolen Property Offenses	1	3	↓
Trespass of Real Property	5	3	↑
Weapon Law Violations	2	3	↓
CFS Status	Q1	3yr Avg	Up/Down
Dispatched	705	625	↑
Initiated	849	972	↓
Unspecified	992	735	↑
Total	2,546	2,331	↑

Note: Initiated CFS are defined by whether the created date and time listed in the CFS match the on scene date and time entered by dispatch. Additionally, follow up and assignment CFS types are included in this category. Dispatched CFS are defined by whether an on scene time is listed in the CFS, and the CFS is not initially defined as initiated. Unspecified CFS include CFS with no on scene date and time information.

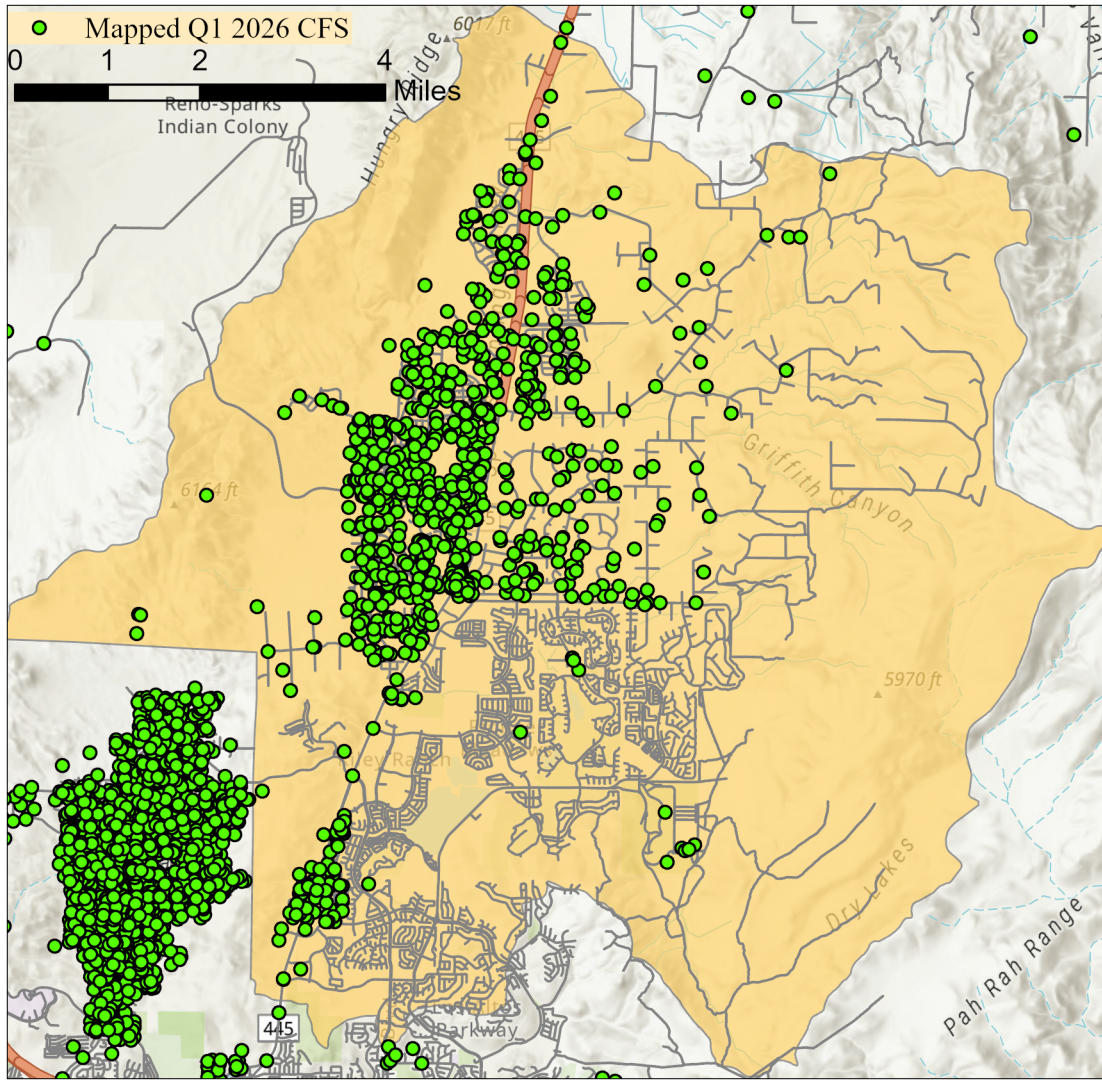
South Truckee Meadows/Washoe Valley CAB



Offense Categories	Q1	3yr Avg	Up/Down	Offense Categories	Q1	3yr Avg	Up/Down
All Other Offenses	32	32	●	Homicide Offenses	0	0	●
Animal Cruelty	0	0	●	Human Trafficking Offenses	0	0	●
Arson	1	0	↑	Kidnapping/Abduction	0	1	↓
Assault Offenses	15	23	↓	Larceny/Theft Offenses	16	24	↓
Bad Checks	0	0	●	Liquor Law Violations	1	1	●
Bribery	0	0	●	Motor Vehicle Theft	1	2	↓
Burglary	4	5	↓	Peeping Tom	0	0	●
Counterfeiting/Forgery	4	5	↓	Pornography/Obscene Material	0	0	●
Curfew/Loitering/Vagrancy	0	0	●	Prostitution Offenses	0	1	↓
Destruction/Damage/Vandalism	10	14	↓	Robbery	0	0	●
Disorderly Conduct	1	2	↓	Sex Offenses	0	5	↓
Driving Under the Influence	13	11	↑	Sex Offenses, Nonforcible	0	0	●
Drug Equipment Violations	6	5	↑	Stolen Property Offenses	0	4	↓
Drug/Narcotic Violations	5	6	↓	Trespass of Real Property	3	2	↑
Drunkenness	0	0	●	Weapon Law Violations	2	2	●
Embezzlement	0	0	●	CFS Status	Q1	3yr Avg	Up/Down
Extortion/Blackmail	2	1	↑	Dispatched	568	600	↓
Family Offenses (Nonviolent)	3	3	●	Initiated	1,509	1,029	↑
Fraud Offenses	39	45	↓	Unspecified	1,419	1,106	↑
Gambling Offenses	0	0	●	Total	3,496	2,735	↑

Note: Initiated CFS are defined by whether the created date and time listed in the CFS match the on scene date and time entered by dispatch. Additionally, follow up and assignment CFS types are included in this category. Dispatched CFS are defined by whether an on scene time is listed in the CFS, and the CFS is not initially defined as initiated. Unspecified CFS include CFS with no on scene date and time information.

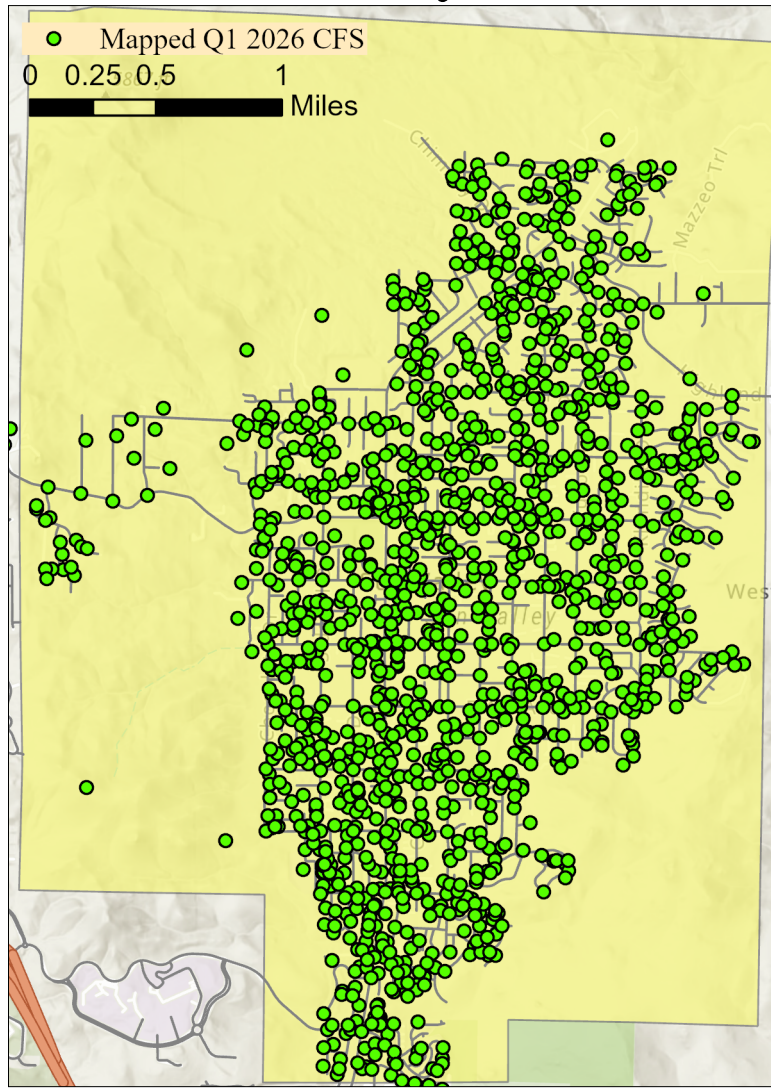
Spanish Springs CAB



Offense Categories	Q1	3yr Avg	Up/Down	Offense Categories	Q1	3yr Avg	Up/Down
All Other Offenses	13	11	↑	Homicide Offenses	0	0	●
Animal Cruelty	0	0	●	Human Trafficking Offenses	0	0	●
Arson	1	0	↑	Kidnapping/Abduction	0	1	↓
Assault Offenses	20	16	↑	Larceny/Theft Offenses	10	10	●
Bad Checks	0	0	●	Liquor Law Violations	3	1	↑
Bribery	0	0	●	Motor Vehicle Theft	1	2	↓
Burglary	1	3	↓	Peeping Tom	0	0	●
Counterfeiting/Forgery	1	0	↑	Pornography/Obscene Material	1	1	●
Curfew/Loitering/Vagrancy	0	0	●	Prostitution Offenses	0	0	●
Destruction/Damage/Vandalism	6	21	↓	Robbery	0	0	●
Disorderly Conduct	1	2	↓	Sex Offenses	8	3	↑
Driving Under the Influence	10	7	↑	Sex Offenses, Nonforcible	1	0	↑
Drug Equipment Violations	1	1	●	Stolen Property Offenses	1	1	●
Drug/Narcotic Violations	0	1	↓	Trespass of Real Property	1	1	●
Drunkness	0	0	●	Weapon Law Violations	5	2	↑
Embezzlement	0	1	↓	CFS Status	Q1	3yr Avg	Up/Down
Extortion/Blackmail	2	2	●	Dispatched	463	384	↑
Family Offenses (Nonviolent)	3	4	↓	Initiated	1,312	586	↑
Fraud Offenses	23	13	↑	Unspecified	801	613	↑
Gambling Offenses	0	0	●	Total	2,576	1,583	↑

Note: Initiated CFS are defined by whether the created date and time listed in the CFS match the on scene date and time entered by dispatch. Additionally, follow up and assignment CFS types are included in this category. Dispatched CFS are defined by whether an on scene time is listed in the CFS, and the CFS is not initially defined as initiated. Unspecified CFS include CFS with no on scene date and time information.

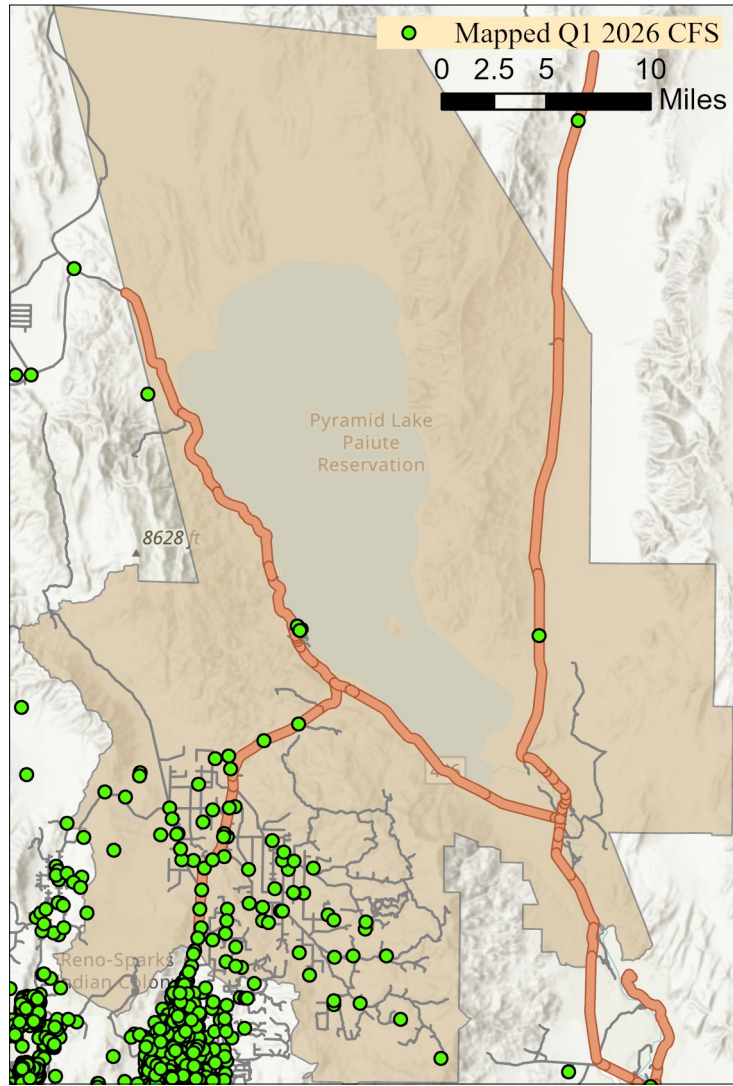
Sun Valley CAB



Offense Categories	Q1	3yr Avg	Up/Down	Offense Categories	Q1	3yr Avg	Up/Down
All Other Offenses	119	92	↑	Homicide Offenses	1	0	↑
Animal Cruelty	1	0	↑	Human Trafficking Offenses	0	0	●
Arson	5	1	↑	Kidnapping/Abduction	3	3	●
Assault Offenses	63	60	↑	Larceny/Theft Offenses	21	26	↓
Bad Checks	0	0	●	Liquor Law Violations	0	2	↓
Bribery	0	0	●	Motor Vehicle Theft	6	9	↓
Burglary	6	11	↓	Peeping Tom	0	0	●
Counterfeiting/Forgery	3	2	↑	Pornography/Obscene Material	1	1	●
Curfew/Loitering/Vagrancy	0	0	●	Prostitution Offenses	0	0	●
Destruction/Damage/Vandalism	28	27	↑	Robbery	0	1	↓
Disorderly Conduct	0	1	↓	Sex Offenses	11	10	↑
Driving Under the Influence	24	11	↑	Sex Offenses, Nonforcible	1	0	↑
Drug Equipment Violations	27	23	↑	Stolen Property Offenses	5	5	●
Drug/Narcotic Violations	25	29	↓	Trespass of Real Property	9	5	↑
Drunkenness	1	0	↑	Weapon Law Violations	13	11	↑
Embezzlement	2	1	↑	CFS Status	Q1	3yr Avg	Up/Down
Extortion/Blackmail	2	2	●	Dispatched	1,070	891	↑
Family Offenses (Nonviolent)	8	9	↓	Initiated	1,824	1,572	↑
Fraud Offenses	24	26	↓	Unspecified	1,225	825	↑
Gambling Offenses	0	0	●	Total	4,119	3,288	↑

Note: Initiated CFS are defined by whether the created date and time listed in the CFS match the on scene date and time entered by dispatch. Additionally, follow up and assignment CFS types are included in this category. Dispatched CFS are defined by whether an on scene time is listed in the CFS, and the CFS is not initially defined as initiated. Unspecified CFS include CFS with no on scene date and time information.

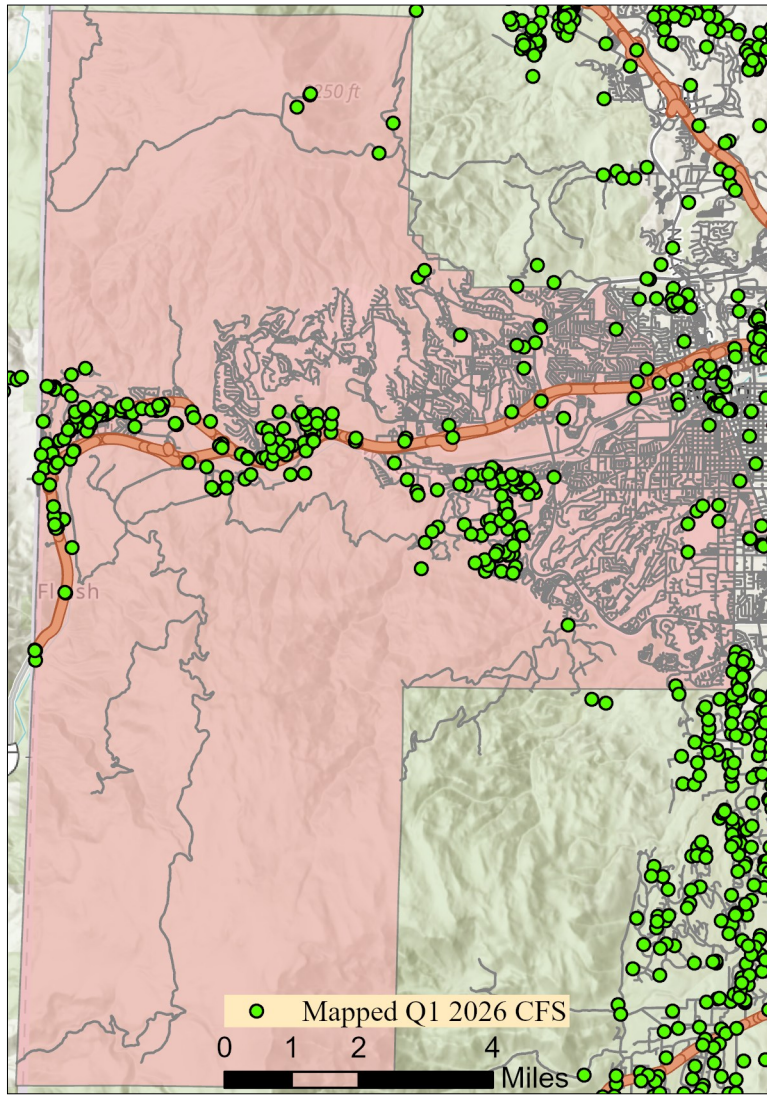
Warm Springs/Rural CAB



Offense Categories	Q1	3yr Avg	Up/Down	Offense Categories	Q1	3yr Avg	Up/Down
All Other Offenses	3	2	↑	Homicide Offenses	0	0	●
Animal Cruelty	0	0	●	Human Trafficking Offenses	0	0	●
Arson	0	0	●	Kidnapping/Abduction	1	0	↑
Assault Offenses	7	1	↑	Larceny/Theft Offenses	1	1	●
Bad Checks	0	0	●	Liquor Law Violations	0	1	↓
Bribery	0	0	●	Motor Vehicle Theft	1	1	●
Burglary	0	0	●	Peeping Tom	0	0	●
Counterfeiting/Forgery	0	0	●	Pornography/Obscene Material	0	0	●
Curfew/Loitering/Vagrancy	0	0	●	Prostitution Offenses	0	0	●
Destruction/Damage/Vandalism	3	1	↑	Robbery	1	0	↑
Disorderly Conduct	0	0	●	Sex Offenses	0	0	●
Driving Under the Influence	1	1	●	Sex Offenses, Nonforcible	0	0	●
Drug Equipment Violations	0	0	●	Stolen Property Offenses	0	0	●
Drug/Narcotic Violations	0	1	↓	Trespass of Real Property	0	0	●
Drunkenness	0	0	●	Weapon Law Violations	1	0	↑
Embezzlement	0	0	●	CFS Status	Q1	3yr Avg	Up/Down
Extortion/Blackmail	0	0	●	Dispatched	36	44	↓
Family Offenses (Nonviolent)	0	0	●	Initiated	45	63	↓
Fraud Offenses	2	1	↑	Unspecified	97	76	↑
Gambling Offenses	0	0	●	Total	178	183	↓

Note: Initiated CFS are defined by whether the created date and time listed in the CFS match the on scene date and time entered by dispatch. Additionally, follow up and assignment CFS types are included in this category. Dispatched CFS are defined by whether an on scene time is listed in the CFS, and the CFS is not initially defined as initiated. Unspecified CFS include CFS with no on scene date and time information.

West Truckee Meadows/Verdi CAB



Offense Categories	Q1	3yr Avg	Up/Down	Offense Categories	Q1	3yr Avg	Up/Down
All Other Offenses	6	9	↓	Homicide Offenses	0	0	●
Animal Cruelty	0	0	●	Human Trafficking Offenses	0	0	●
Arson	0	0	●	Kidnapping/Abduction	0	0	●
Assault Offenses	5	5	●	Larceny/Theft Offenses	4	11	↓
Bad Checks	0	0	●	Liquor Law Violations	0	0	●
Bribery	0	0	●	Motor Vehicle Theft	2	2	●
Burglary	4	2	↑	Peeping Tom	0	0	●
Counterfeiting/Forgery	1	0	↑	Pornography/Obscene Material	1	1	●
Curfew/Loitering/Vagrancy	0	0	●	Prostitution Offenses	0	1	↓
Destruction/Damage/Vandalism	3	5	↓	Robbery	0	0	●
Disorderly Conduct	1	1	●	Sex Offenses	2	1	↑
Driving Under the Influence	6	2	↑	Sex Offenses, Nonforcible	2	0	↑
Drug Equipment Violations	5	4	↑	Stolen Property Offenses	1	3	↓
Drug/Narcotic Violations	7	7	●	Trespass of Real Property	0	2	↓
Drunkenness	0	0	●	Weapon Law Violations	0	2	↓
Embezzlement	0	0	●	CFS Status	Q1	3yr Avg	Up/Down
Extortion/Blackmail	1	1	●	Dispatched	109	117	↓
Family Offenses (Nonviolent)	0	0	●	Initiated	485	342	↑
Fraud Offenses	5	5	●	Unspecified	248	174	↑
Gambling Offenses	0	0	●	Total	842	634	↑

Note: Initiated CFS are defined by whether the created date and time listed in the CFS match the on scene date and time entered by dispatch. Additionally, follow up and assignment CFS types are included in this category. Dispatched CFS are defined by whether an on scene time is listed in the CFS, and the CFS is not initially defined as initiated. Unspecified CFS include CFS with no on scene date and time information.