

Washoe County Sheriff's Office

CAB Data

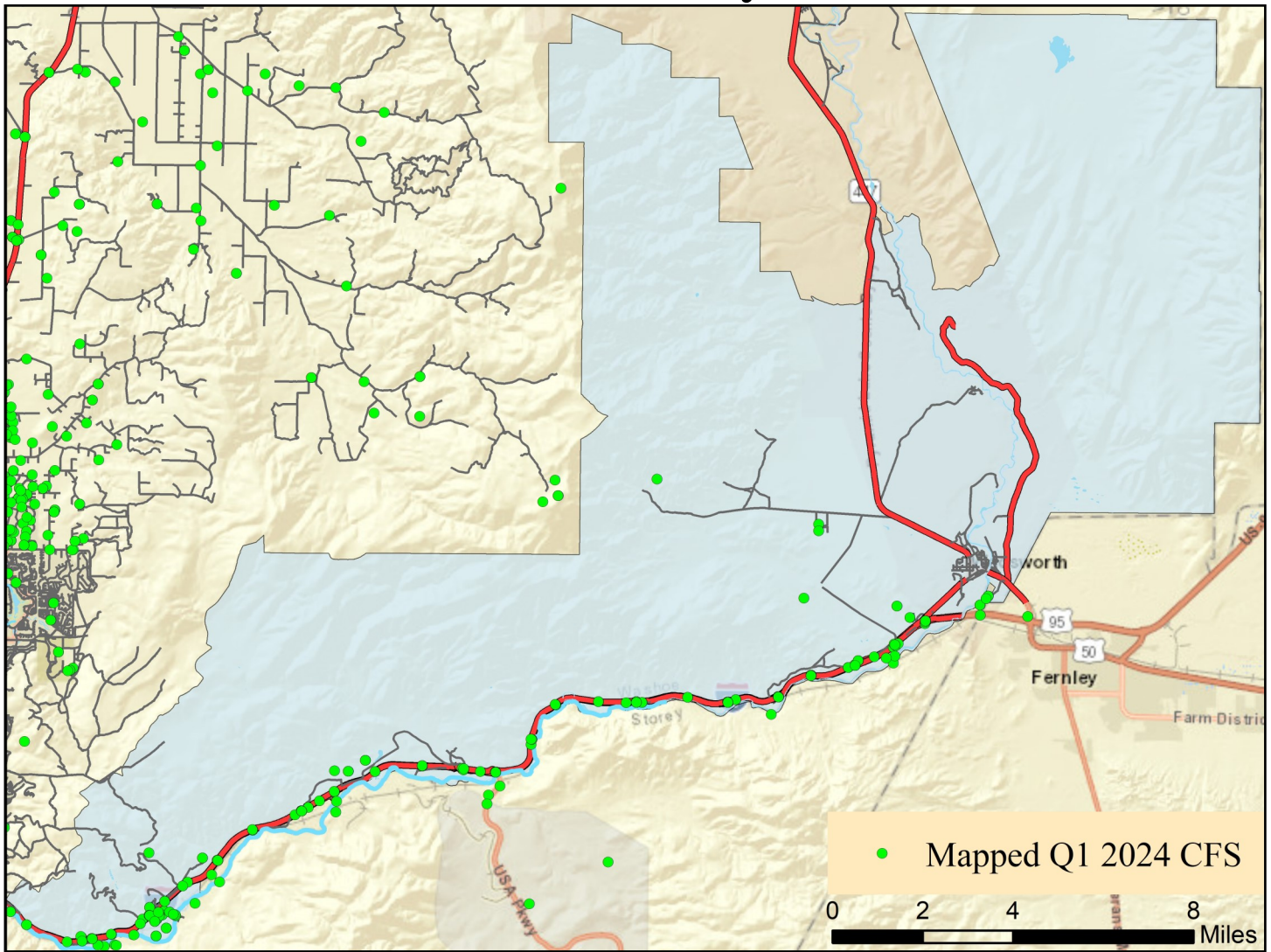
Quarter 1 2024



Note: Calls for service (CFS) and case data reflect WCSO jurisdictions. CFS and cases are mapped with useable coordinates only.

Published: 4/10/2024

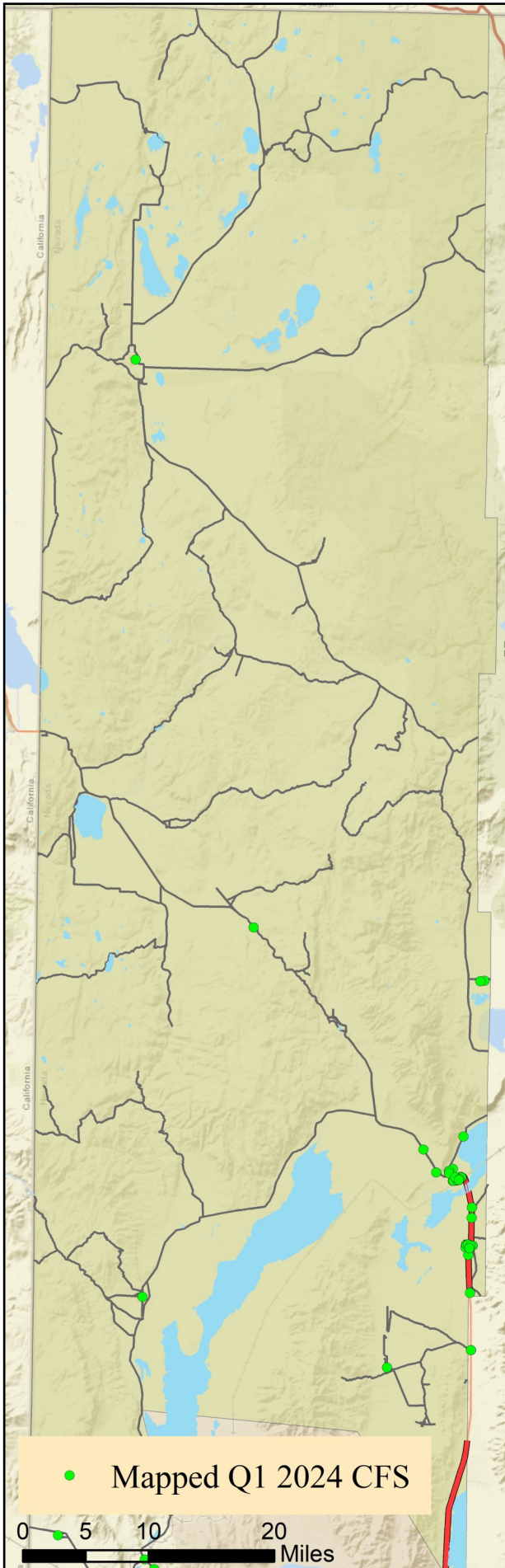
East Truckee Canyon CAB



Offense Categories	Q1	3yr Avg	Up/Down	Offense Categories	Q1	3yr Avg	Up/Down
All Other Offenses	1	0	↑	Homicide Offenses	0	0	●
Animal Cruelty	0	0	●	Human Trafficking Offenses	0	0	●
Arson	1	0	↑	Kidnapping/Abduction	0	0	●
Assault Offenses	2	1	↑	Larceny/Theft Offenses	1	2	↓
Bad Checks	0	0	●	Liquor Law Violations	0	0	●
Bribery	0	0	●	Motor Vehicle Theft	0	0	●
Burglary	1	1	●	Peeping Tom	0	0	●
Counterfeiting/Forgery	0	0	●	Pornography/Obscene Material	0	0	●
Curfew/Loitering/Vagrancy	0	0	●	Prostitution Offenses	0	0	●
Destruction/Damage/Vandalism	2	2	●	Robbery	0	0	●
Disorderly Conduct	0	0	●	Sex Offenses	0	1	↓
Driving Under the Influence	1	1	●	Sex Offenses, Nonforcible	0	0	●
Drug Equipment Violations	0	0	●	Stolen Property Offenses	0	0	●
Drug/Narcotic Violations	7	2	↑	Trespass of Real Property	0	0	●
Drunkenness	0	0	●	Weapon Law Violations	0	0	●
Embezzlement	0	0	●	CFS Status	Q1	3yr Avg	Up/Down
Extortion/Blackmail	0	0	●	Dispatched	58	47	↑
Family Offenses (Nonviolent)	0	0	●	Initiated	636	176	↑
Fraud Offenses	1	1	●	Unspecified	232	115	↑
Gambling Offenses	0	0	●	Total	926	338	↑

Note: Initiated CFS are defined by whether the created date and time listed in the CFS match the on scene date and time entered by dispatch. Additionally, follow up and assignment CFS types are included in this category. Dispatched CFS are defined by whether an on scene time is listed in the CFS, and the CFS is not initially defined as initiated. Unspecified CFS include CFS with no on scene date and time information.

Gerlach/Empire CAB

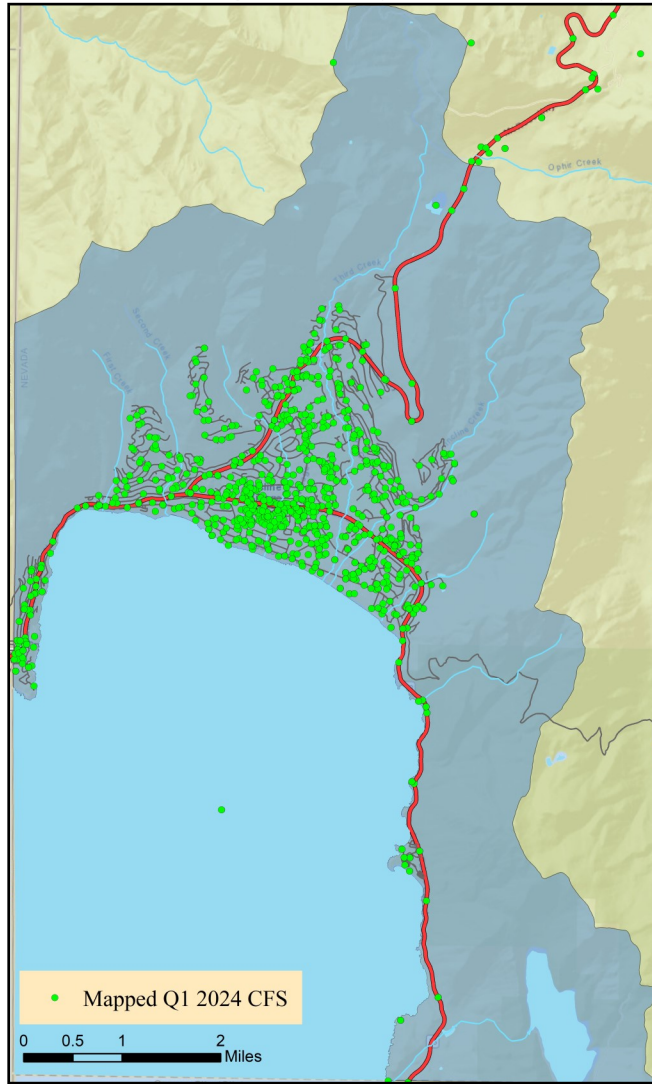


Offense Categories	Q1	3yr Avg	Up/Down
All Other Offenses	1	1	●
Animal Cruelty	0	0	●
Arson	1	0	↑
Assault Offenses	2	1	↑
Bad Checks	0	0	●
Bribery	0	0	●
Burglary	1	1	●
Counterfeiting/Forgery	0	0	●
Curfew/Loitering/Vagrancy	0	0	●
Destruction/Damage/Vandalism	2	1	↑
Disorderly Conduct	0	0	●
Driving Under the Influence	1	0	↑
Drug Equipment Violations	0	0	●
Drug/Narcotic Violations	7	0	↑
Drunkenness	0	0	●
Embezzlement	0	0	●
Extortion/Blackmail	0	0	●
Family Offenses (Nonviolent)	0	0	●
Fraud Offenses	1	0	↑
Gambling Offenses	0	0	●

Offense Categories	Q1	3yr Avg	Up/Down
Homicide Offenses	0	0	●
Human Trafficking Offenses	0	0	●
Kidnapping/Abduction	0	0	●
Larceny/Theft Offenses	1	0	↑
Liquor Law Violations	0	0	●
Motor Vehicle Theft	0	0	●
Peeping Tom	0	0	●
Pornography/Obscene Material	0	0	●
Prostitution Offenses	0	0	●
Robbery	0	0	●
Sex Offenses	0	0	●
Sex Offenses, Nonforcible	0	0	●
Stolen Property Offenses	0	0	●
Trespass of Real Property	0	1	↓
Weapon Law Violations	0	0	●
CFS Status	Q1	3yr Avg	Up/Down
Dispatched	11	14	↓
Initiated	216	216	●
Unspecified	21	16	↑
Total	248	246	↑

Note: Initiated CFS are defined by whether the created date and time listed in the CFS match the on scene date and time entered by dispatch. Additionally, follow up and assignment CFS types are included in this category. Dispatched CFS are defined by whether an on scene time is listed in the CFS, and the CFS is not initially defined as initiated. Unspecified CFS include CFS with no on scene date and time information.

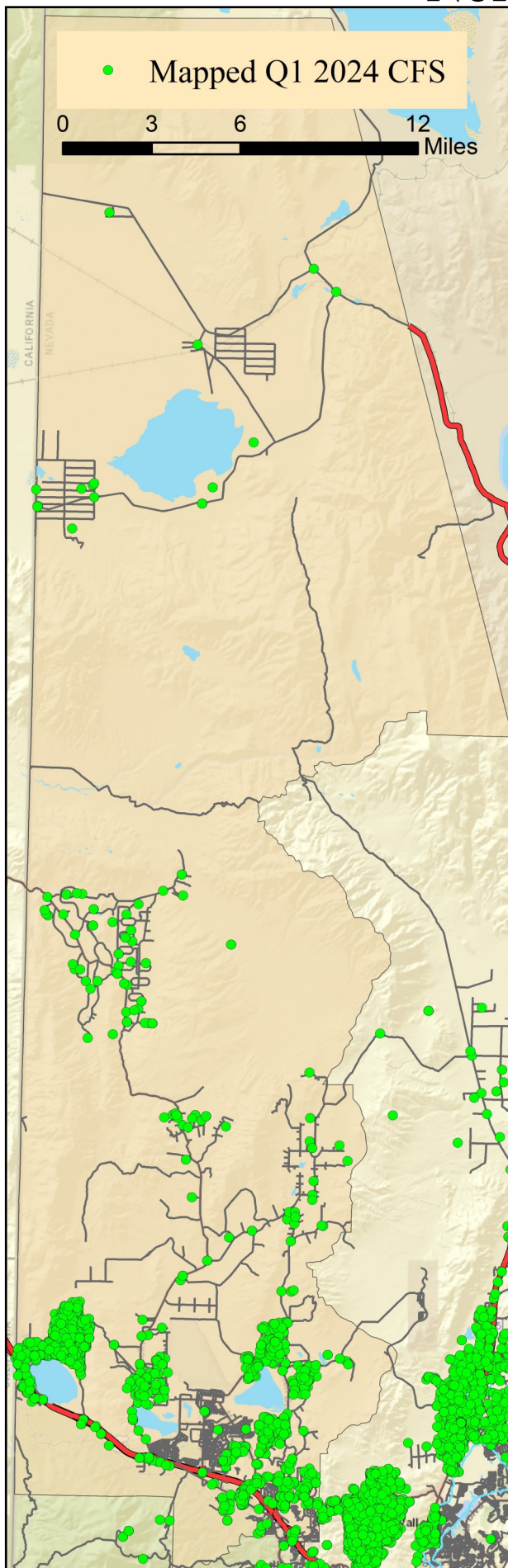
Incline Village/Crystal Bay CAB



Offense Categories	Q1	3yr Avg	Up/Down	Offense Categories	Q1	3yr Avg	Up/Down
All Other Offenses	14	10	↑	Homicide Offenses	0	0	●
Animal Cruelty	0	0	●	Human Trafficking Offenses	2	0	↑
Arson	1	0	↑	Kidnapping/Abduction	0	1	↓
Assault Offenses	12	9	↑	Larceny/Theft Offenses	8	11	↓
Bad Checks	0	0	●	Liquor Law Violations	1	1	●
Bribery	0	0	●	Motor Vehicle Theft	3	2	↑
Burglary	1	3	↓	Peeping Tom	0	0	●
Counterfeiting/Forgery	1	1	●	Pornography/Obscene Material	2	0	↑
Curfew/Loitering/Vagrancy	0	0	●	Prostitution Offenses	0	0	●
Destruction/Damage/Vandalism	3	9	↓	Robbery	0	1	↓
Disorderly Conduct	1	1	●	Sex Offenses	3	2	↑
Driving Under the Influence	8	5	↑	Sex Offenses, Nonforcible	1	0	↑
Drug Equipment Violations	4	2	↑	Stolen Property Offenses	0	1	↓
Drug/Narcotic Violations	5	4	↑	Trespass of Real Property	3	3	●
Drunkenness	0	0	●	Weapon Law Violations	0	1	↓
Embezzlement	1	0	↑	CFS Status	Q1	3yr Avg	Up/Down
Extortion/Blackmail	0	0	●	Dispatched	543	544	↓
Family Offenses (Nonviolent)	1	1	●	Initiated	1,599	1,519	↑
Fraud Offenses	8	13	↓	Unspecified	646	787	↓
Gambling Offenses	0	0	●	Total	2,788	2,851	↓

Note: Initiated CFS are defined by whether the created date and time listed in the CFS match the on scene date and time entered by dispatch. Additionally, follow up and assignment CFS types are included in this category. Dispatched CFS are defined by whether an on scene time is listed in the CFS, and the CFS is not initially defined as initiated. Unspecified CFS include CFS with no on scene date and time information.

North Valleys CAB

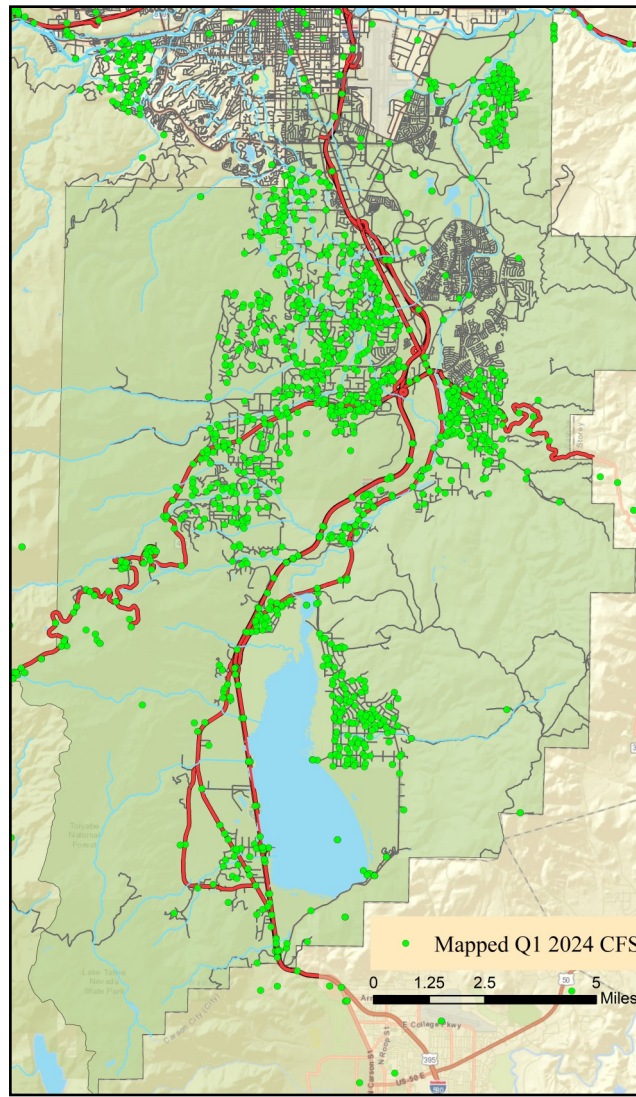


Offense Categories	Q1	3yr Avg	Up/Down
All Other Offenses	67	40	↑
Animal Cruelty	0	0	●
Arson	0	0	●
Assault Offenses	35	33	↑
Bad Checks	0	0	●
Bribery	0	0	●
Burglary	11	10	↑
Counterfeiting/Forgery	2	2	●
Curfew/Loitering/Vagrancy	1	1	●
Destruction/Damage/Vandalism	24	18	↑
Disorderly Conduct	0	2	↓
Driving Under the Influence	12	14	↓
Drug Equipment Violations	11	10	↑
Drug/Narcotic Violations	14	11	↑
Drunkenness	0	0	●
Embezzlement	0	1	↓
Extortion/Blackmail	0	1	↓
Family Offenses (Nonviolent)	9	6	↑
Fraud Offenses	27	31	↓
Gambling Offenses	0	0	●

Offense Categories	Q1	3yr Avg	Up/Down
Homicide Offenses	0	0	●
Human Trafficking Offenses	0	0	●
Kidnapping/Abduction	1	1	●
Larceny/Theft Offenses	24	25	↓
Liquor Law Violations	1	1	●
Motor Vehicle Theft	3	7	↓
Peeping Tom	0	0	●
Pornography/Obscene Material	1	1	●
Prostitution Offenses	0	0	●
Robbery	0	1	↓
Sex Offenses	8	4	↑
Sex Offenses, Nonforcible	0	1	↓
Stolen Property Offenses	3	5	↓
Trespass of Real Property	5	4	↑
Weapon Law Violations	1	5	↓
CFS Status	Q1	3yr Avg	Up/Down
Dispatched	618	668	↓
Initiated	969	663	↑
Unspecified	815	606	↑
Total	2,402	1,936	↑

Note: Initiated CFS are defined by whether the created date and time listed in the CFS match the on scene date and time entered by dispatch. Additionally, follow up and assignment CFS types are included in this category. Dispatched CFS are defined by whether an on scene time is listed in the CFS, and the CFS is not initially defined as initiated. Unspecified CFS include CFS with no on scene date and time information.

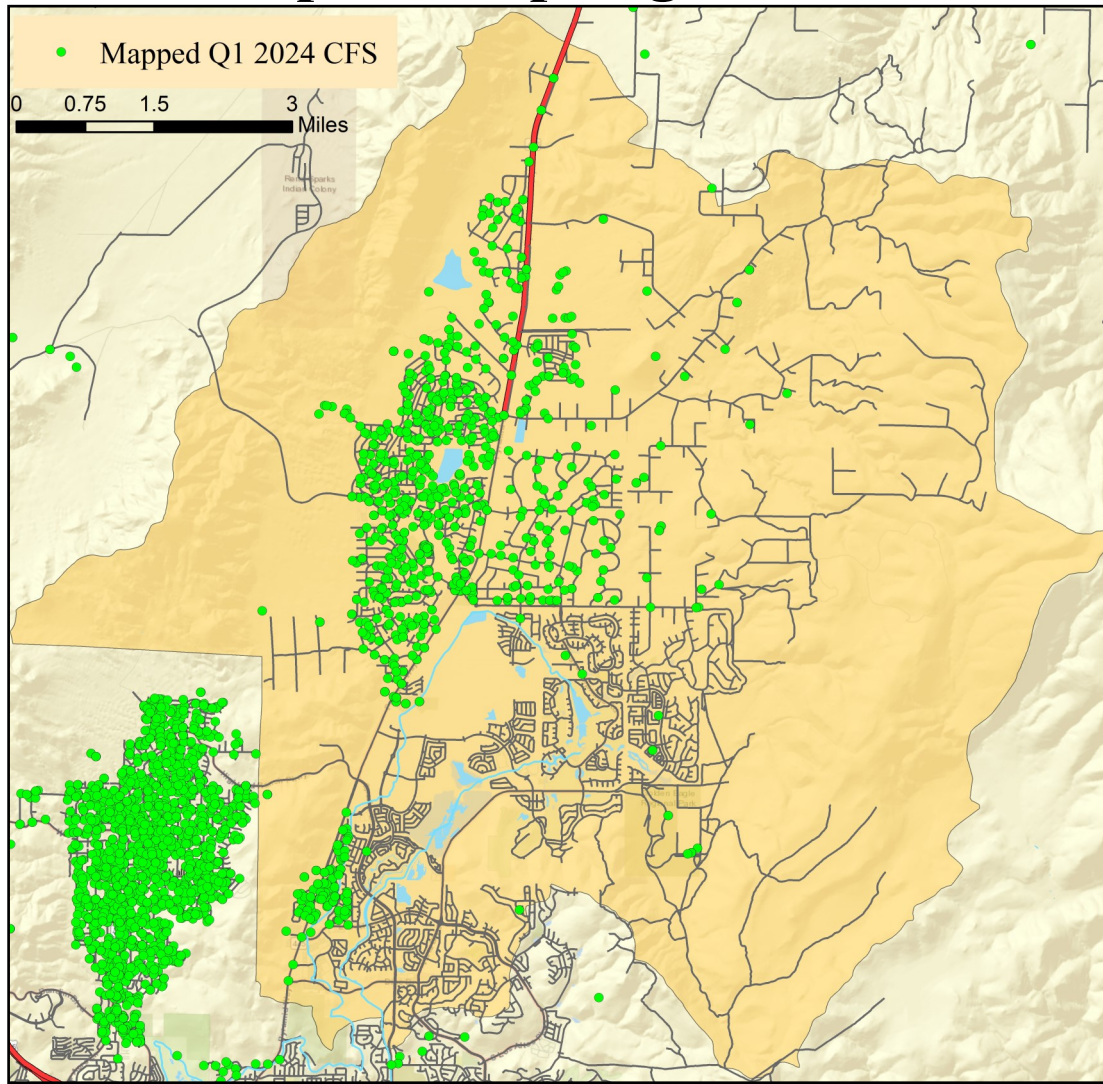
South Truckee Meadows/Washoe Valley CAB



Offense Categories	Q1	3yr Avg	Up/Down	Offense Categories	Q1	3yr Avg	Up/Down
All Other Offenses	36	28	↑	Homicide Offenses	0	0	●
Animal Cruelty	0	0	●	Human Trafficking Offenses	0	0	●
Arson	0	0	●	Kidnapping/Abduction	2	0	↑
Assault Offenses	25	20	↑	Larceny/Theft Offenses	30	34	↓
Bad Checks	1	0	↑	Liquor Law Violations	0	1	↓
Bribery	0	0	●	Motor Vehicle Theft	3	2	↑
Burglary	3	10	↓	Peeping Tom	0	0	●
Counterfeiting/Forgery	5	4	↑	Pornography/Obscene Material	0	1	↓
Curfew/Loitering/Vagrancy	0	0	●	Prostitution Offenses	0	0	●
Destruction/Damage/Vandalism	13	17	↓	Robbery	0	0	●
Disorderly Conduct	2	3	↓	Sex Offenses	4	5	↓
Driving Under the Influence	11	7	↑	Sex Offenses, Nonforcible	0	0	●
Drug Equipment Violations	5	5	●	Stolen Property Offenses	4	5	↓
Drug/Narcotic Violations	6	8	↓	Trespass of Real Property	3	3	●
Drunkness	0	0	●	Weapon Law Violations	3	1	↑
Embezzlement	0	2	↓	CFS Status	Q1	3yr Avg	Up/Down
Extortion/Blackmail	0	1	↓	Dispatched	581	627	↓
Family Offenses (Nonviolent)	7	3	↑	Initiated	1,080	864	↑
Fraud Offenses	41	56	↓	Unspecified	1,194	899	↑
Gambling Offenses	0	0	●	Total	2,855	2,390	↑

Note: Initiated CFS are defined by whether the created date and time listed in the CFS match the on scene date and time entered by dispatch. Additionally, follow up and assignment CFS types are included in this category. Dispatched CFS are defined by whether an on scene time is listed in the CFS, and the CFS is not initially defined as initiated. Unspecified CFS include CFS with no on scene date and time information.

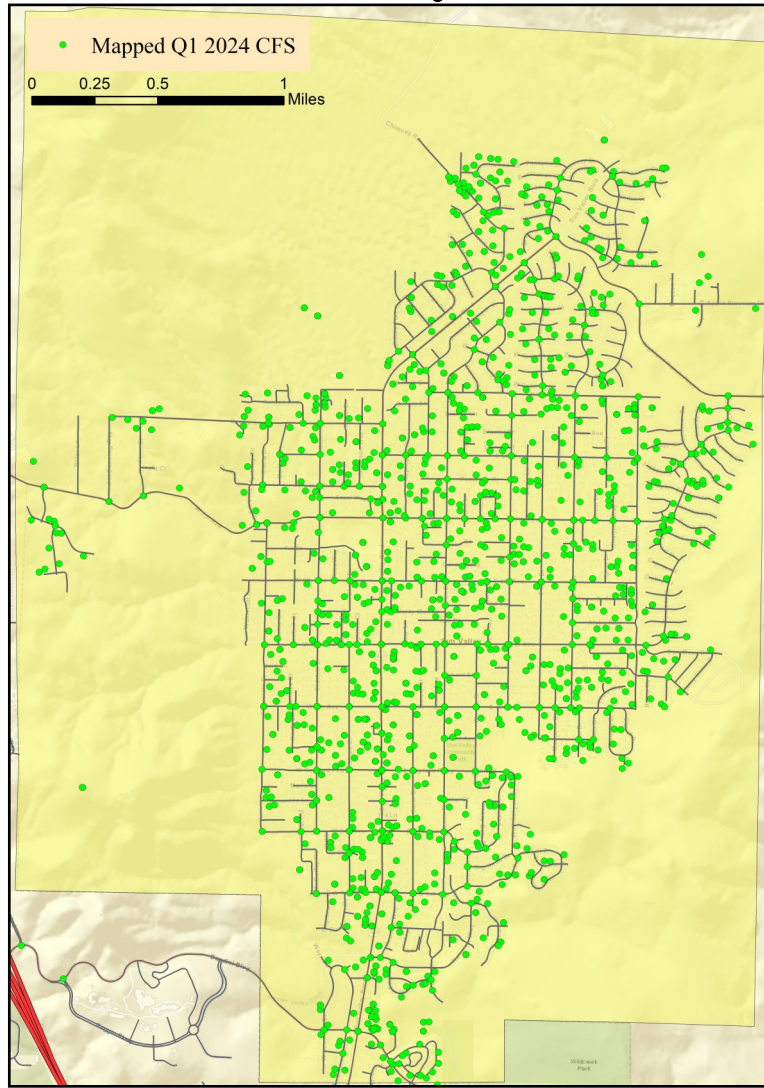
Spanish Springs CAB



Offense Categories	Q1	3yr Avg	Up/Down	Offense Categories	Q1	3yr Avg	Up/Down
All Other Offenses	4	14	↓	Homicide Offenses	0	0	●
Animal Cruelty	0	0	●	Human Trafficking Offenses	0	0	●
Arson	0	0	●	Kidnapping/Abduction	2	0	↑
Assault Offenses	23	18	↑	Larceny/Theft Offenses	4	20	↓
Bad Checks	0	0	●	Liquor Law Violations	1	1	●
Bribery	0	0	●	Motor Vehicle Theft	2	1	↑
Burglary	4	4	●	Peeping Tom	0	0	●
Counterfeiting/Forgery	0	1	↓	Pornography/Obscene Material	0	1	↓
Curfew/Loitering/Vagrancy	0	1	↓	Prostitution Offenses	0	0	●
Destruction/Damage/Vandalism	22	18	↑	Robbery	0	0	●
Disorderly Conduct	3	2	↑	Sex Offenses	2	5	↓
Driving Under the Influence	8	5	↑	Sex Offenses, Nonforcible	0	0	●
Drug Equipment Violations	1	3	↓	Stolen Property Offenses	1	2	↓
Drug/Narcotic Violations	1	3	↓	Trespass of Real Property	1	0	↑
Drunkness	0	0	●	Weapon Law Violations	1	3	↓
Embezzlement	2	1	↑	CFS Status	Q1	3yr Avg	Up/Down
Extortion/Blackmail	1	1	●	Dispatched	387	364	↑
Family Offenses (Nonviolent)	6	3	↑	Initiated	559	375	↑
Fraud Offenses	7	35	↓	Unspecified	592	507	↑
Gambling Offenses	0	0	●	Total	1,538	1,246	↑

Note: Initiated CFS are defined by whether the created date and time listed in the CFS match the on scene date and time entered by dispatch. Additionally, follow up and assignment CFS types are included in this category. Dispatched CFS are defined by whether an on scene time is listed in the CFS, and the CFS is not initially defined as initiated. Unspecified CFS include CFS with no on scene date and time information.

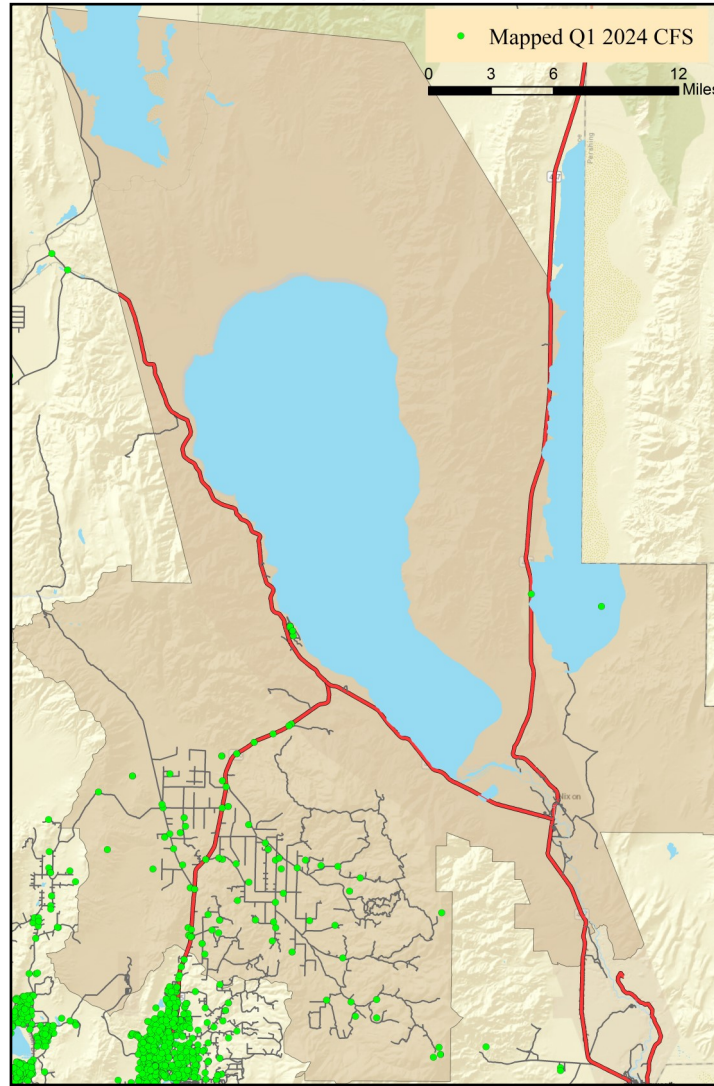
Sun Valley CAB



Offense Categories	Q1	3yr Avg	Up/Down	Offense Categories	Q1	3yr Avg	Up/Down
All Other Offenses	80	92	↓	Homicide Offenses	0	1	↓
Animal Cruelty	0	0	○	Human Trafficking Offenses	1	0	↑
Arson	1	1	○	Kidnapping/Abduction	2	3	↓
Assault Offenses	50	47	↑	Larceny/Theft Offenses	26	26	○
Bad Checks	0	0	○	Liquor Law Violations	0	3	↓
Bribery	0	0	○	Motor Vehicle Theft	12	9	↑
Burglary	11	12	↓	Peeping Tom	0	0	○
Counterfeiting/Forgery	3	3	○	Pornography/Obscene Material	1	2	↓
Curfew/Loitering/Vagrancy	0	1	↓	Prostitution Offenses	0	0	○
Destruction/Damage/Vandalism	31	28	↑	Robbery	2	1	↑
Disorderly Conduct	1	3	↓	Sex Offenses	8	9	↓
Driving Under the Influence	10	20	↓	Sex Offenses, Nonforcible	0	0	○
Drug Equipment Violations	15	26	↓	Stolen Property Offenses	5	7	↓
Drug/Narcotic Violations	17	29	↓	Trespass of Real Property	7	6	↑
Drunkenness	0	1	↓	Weapon Law Violations	11	9	↑
Embezzlement	1	0	↑	CFS Status	Q1	3yr Avg	Up/Down
Extortion/Blackmail	1	1	○	Dispatched	921	935	↓
Family Offenses (Nonviolent)	13	9	↑	Initiated	1,258	1,575	↓
Fraud Offenses	31	29	↑	Unspecified	867	663	↑
Gambling Offenses	0	0	○	Total	3,046	3,173	↓

Note: Initiated CFS are defined by whether the created date and time listed in the CFS match the on scene date and time entered by dispatch. Additionally, follow up and assignment CFS types are included in this category. Dispatched CFS are defined by whether an on scene time is listed in the CFS, and the CFS is not initially defined as initiated. Unspecified CFS include CFS with no on scene date and time information.

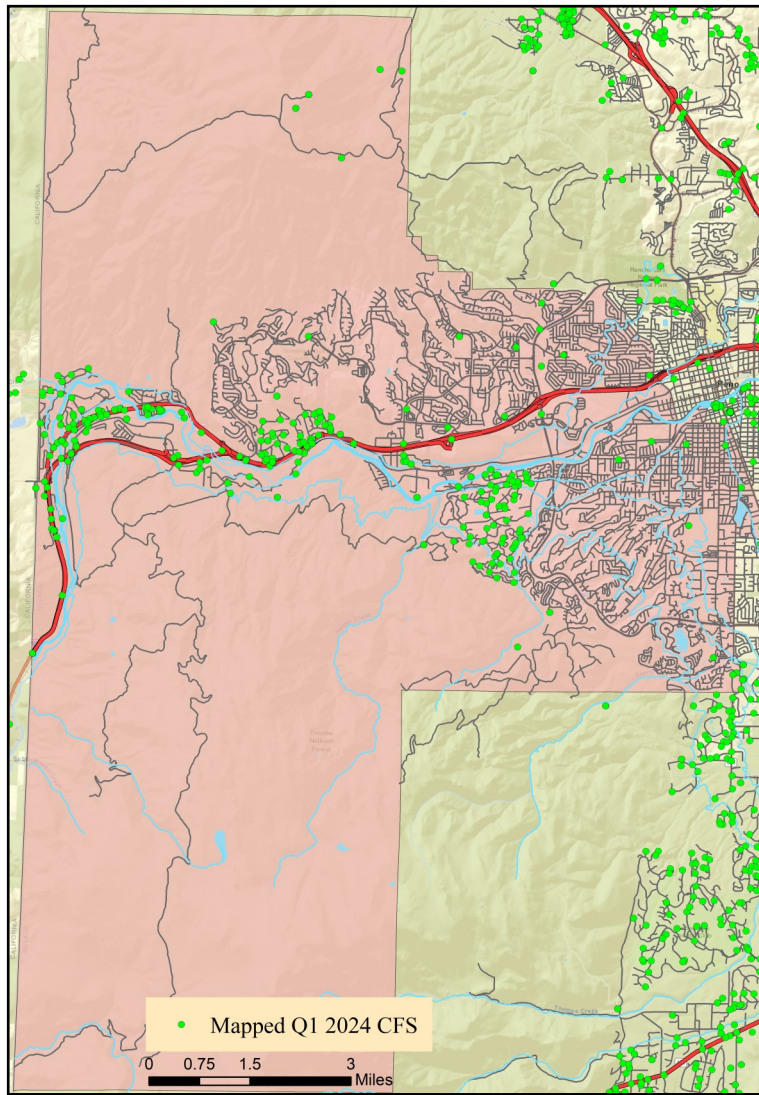
Warm Springs/Rural CAB



Offense Categories	Q1	3yr Avg	Up/Down	Offense Categories	Q1	3yr Avg	Up/Down
All Other Offenses	4	2	↑	Homicide Offenses	0	0	●
Animal Cruelty	0	0	●	Human Trafficking Offenses	0	0	●
Arson	0	0	●	Kidnapping/Abduction	0	0	●
Assault Offenses	1	1	●	Larceny/Theft Offenses	3	2	↑
Bad Checks	0	0	●	Liquor Law Violations	2	0	↑
Bribery	0	0	●	Motor Vehicle Theft	2	1	↑
Burglary	1	0	↑	Peeping Tom	0	0	●
Counterfeiting/Forgery	1	0	↑	Pornography/Obscene Material	0	0	●
Curfew/Loitering/Vagrancy	0	0	●	Prostitution Offenses	0	0	●
Destruction/Damage/Vandalism	3	1	↑	Robbery	0	0	●
Disorderly Conduct	0	0	●	Sex Offenses	0	0	●
Driving Under the Influence	2	0	↑	Sex Offenses, Nonforcible	0	0	●
Drug Equipment Violations	0	0	●	Stolen Property Offenses	1	0	↑
Drug/Narcotic Violations	2	0	↑	Trespass of Real Property	0	0	●
Drunkenness	0	0	●	Weapon Law Violations	0	0	●
Embezzlement	0	0	●	CFS Status	Q1	3yr Avg	Up/Down
Extortion/Blackmail	0	0	●	Dispatched	58	44	↑
Family Offenses (Nonviolent)	0	0	●	Initiated	54	63	↓
Fraud Offenses	0	3	↓	Unspecified	85	70	↑
Gambling Offenses	0	0	●	Total	197	178	↑

Note: Initiated CFS are defined by whether the created date and time listed in the CFS match the on scene date and time entered by dispatch. Additionally, follow up and assignment CFS types are included in this category. Dispatched CFS are defined by whether an on scene time is listed in the CFS, and the CFS is not initially defined as initiated. Unspecified CFS include CFS with no on scene date and time information.

West Truckee Meadows/Verdi CAB



Offense Categories	Q1	3yr Avg	Up/Down	Offense Categories	Q1	3yr Avg	Up/Down
All Other Offenses	10	12	↓	Homicide Offenses	0	0	●
Animal Cruelty	0	0	●	Human Trafficking Offenses	0	0	●
Arson	0	0	●	Kidnapping/Abduction	0	0	●
Assault Offenses	6	4	↑	Larceny/Theft Offenses	8	10	↓
Bad Checks	0	0	●	Liquor Law Violations	0	0	●
Bribery	0	0	●	Motor Vehicle Theft	2	2	●
Burglary	1	4	↓	Peeping Tom	0	0	●
Counterfeiting/Forgery	0	0	●	Pornography/Obscene Material	0	0	●
Curfew/Loitering/Vagrancy	0	0	●	Prostitution Offenses	0	0	●
Destruction/Damage/Vandalism	3	9	↓	Robbery	0	0	●
Disorderly Conduct	1	0	↑	Sex Offenses	1	1	●
Driving Under the Influence	1	2	↓	Sex Offenses, Nonforcible	0	0	●
Drug Equipment Violations	4	5	↓	Stolen Property Offenses	1	2	↓
Drug/Narcotic Violations	6	8	↓	Trespass of Real Property	1	1	●
Drunkenness	0	0	●	Weapon Law Violations	2	2	●
Embezzlement	0	0	●	CFS Status	Q1	3yr Avg	Up/Down
Extortion/Blackmail	0	0	●	Dispatched	103	139	↓
Family Offenses (Nonviolent)	1	1	●	Initiated	242	309	↓
Fraud Offenses	5	10	↓	Unspecified	197	129	↑
Gambling Offenses	0	0	●	Total	542	577	↓

Note: Initiated CFS are defined by whether the created date and time listed in the CFS match the on scene date and time entered by dispatch. Additionally, follow up and assignment CFS types are included in this category. Dispatched CFS are defined by whether an on scene time is listed in the CFS, and the CFS is not initially defined as initiated. Unspecified CFS include CFS with no on scene date and time information.