

Washoe County Sheriff's Office

CAB Data

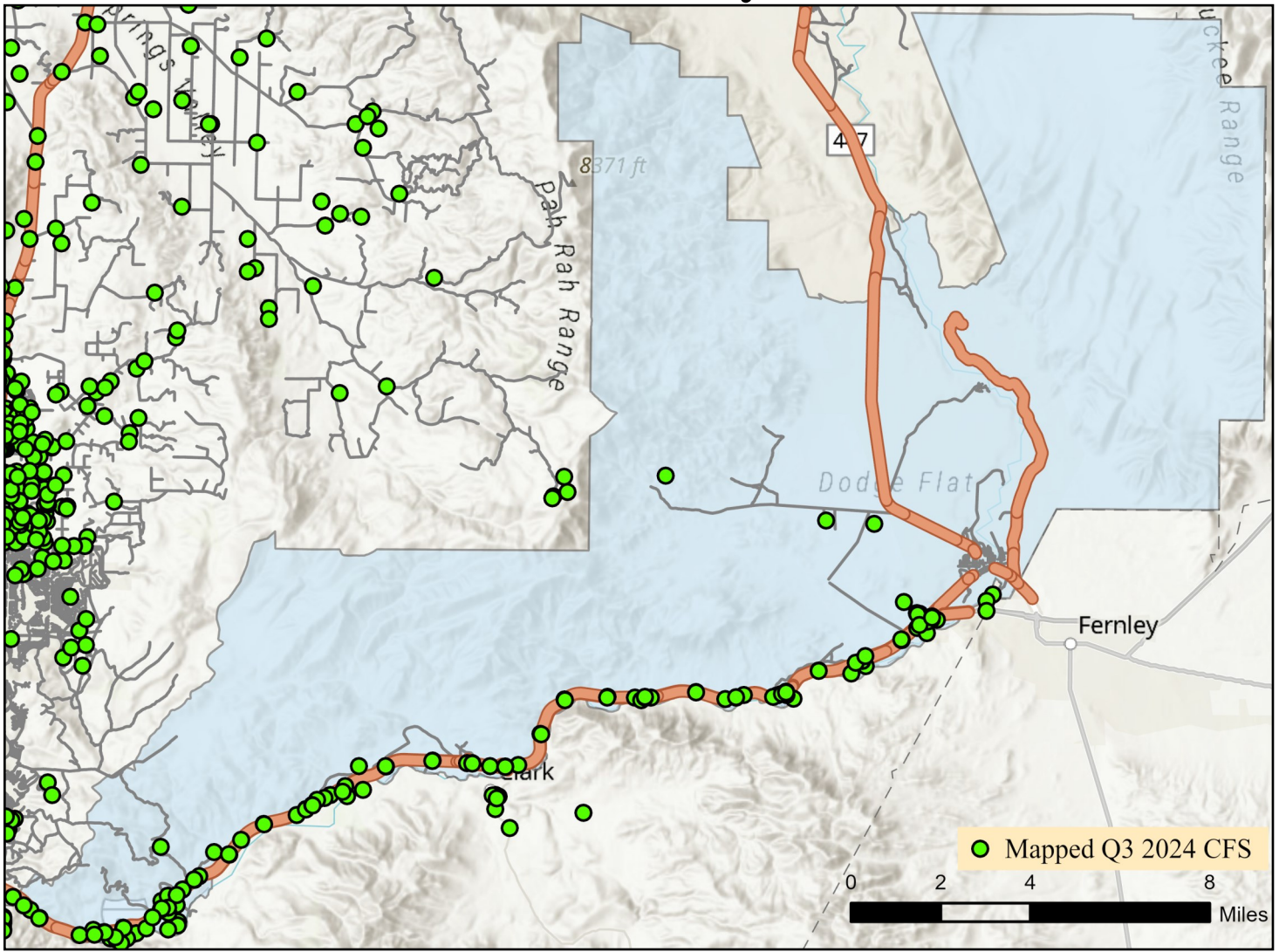
Quarter 3 2024



Note: Calls for service (CFS) and case data reflect WCSO jurisdictions. CFS and cases are mapped with useable coordinates only.

Published: 10/28/2024

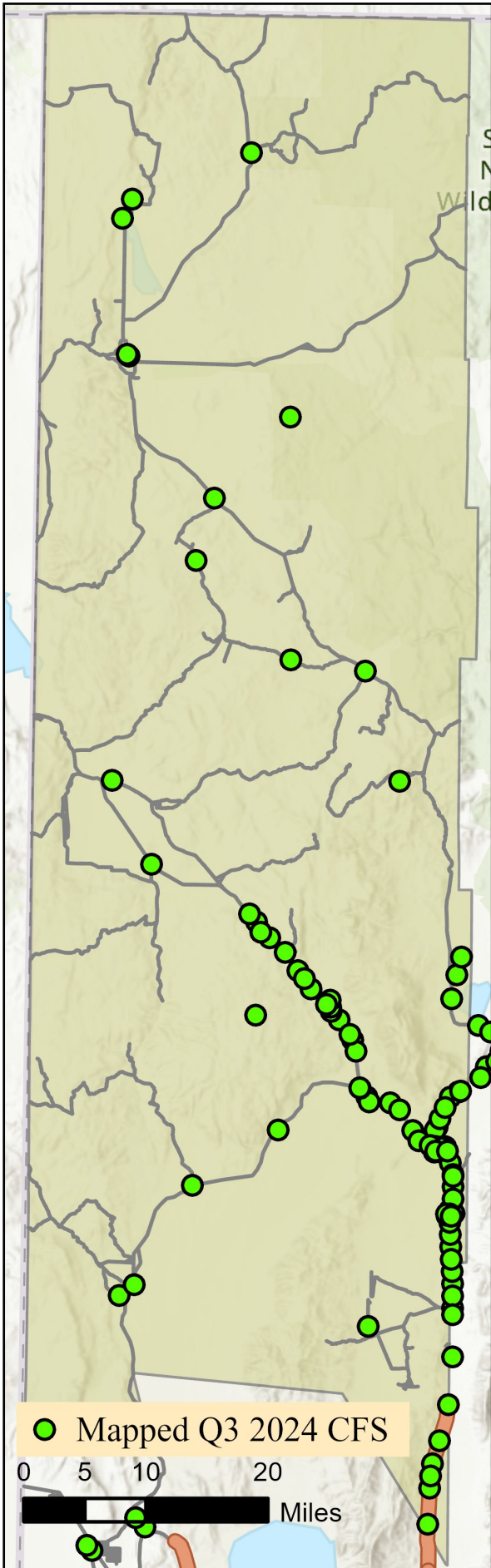
East Truckee Canyon CAB



Offense Categories	Q3	3yr Avg	Up/Down	Offense Categories	Q3	3yr Avg	Up/Down
All Other Offenses	2	1	↑	Homicide Offenses	0	0	●
Animal Cruelty	0	0	●	Human Trafficking Offenses	0	0	●
Arson	0	0	●	Kidnapping/Abduction	0	0	●
Assault Offenses	0	2	↓	Larceny/Theft Offenses	2	2	●
Bad Checks	0	0	●	Liquor Law Violations	0	0	●
Bribery	0	0	●	Motor Vehicle Theft	0	1	↓
Burglary	0	1	↓	Peeping Tom	0	0	●
Counterfeiting/Forgery	0	0	●	Pornography/Obscene Material	0	0	●
Curfew/Loitering/Vagrancy	0	0	●	Prostitution Offenses	0	0	●
Destruction/Damage/Vandalism	0	2	↓	Robbery	0	0	●
Disorderly Conduct	0	0	●	Sex Offenses	0	0	●
Driving Under the Influence	0	0	●	Sex Offenses, Nonforcible	0	0	●
Drug Equipment Violations	1	1	●	Stolen Property Offenses	0	0	●
Drug/Narcotic Violations	3	2	↑	Trespass of Real Property	0	0	●
Drunkenness	0	0	●	Weapon Law Violations	0	0	●
Embezzlement	0	0	●	CFS Status	Q3	3yr Avg	Up/Down
Extortion/Blackmail	0	0	●	Dispatched	74	65	↑
Family Offenses (Nonviolent)	0	0	●	Initiated	720	183	↑
Fraud Offenses	0	0	●	Unspecified	299	181	↑
Gambling Offenses	0	0	●	Total	1,093	428	↑

Note: Initiated CFS are defined by whether the created date and time listed in the CFS match the on scene date and time entered by dispatch. Additionally, follow up and assignment CFS types are included in this category. Dispatched CFS are defined by whether an on scene time is listed in the CFS, and the CFS is not initially defined as initiated. Unspecified CFS include CFS with no on scene date and time information.

Gerlach/Empire CAB



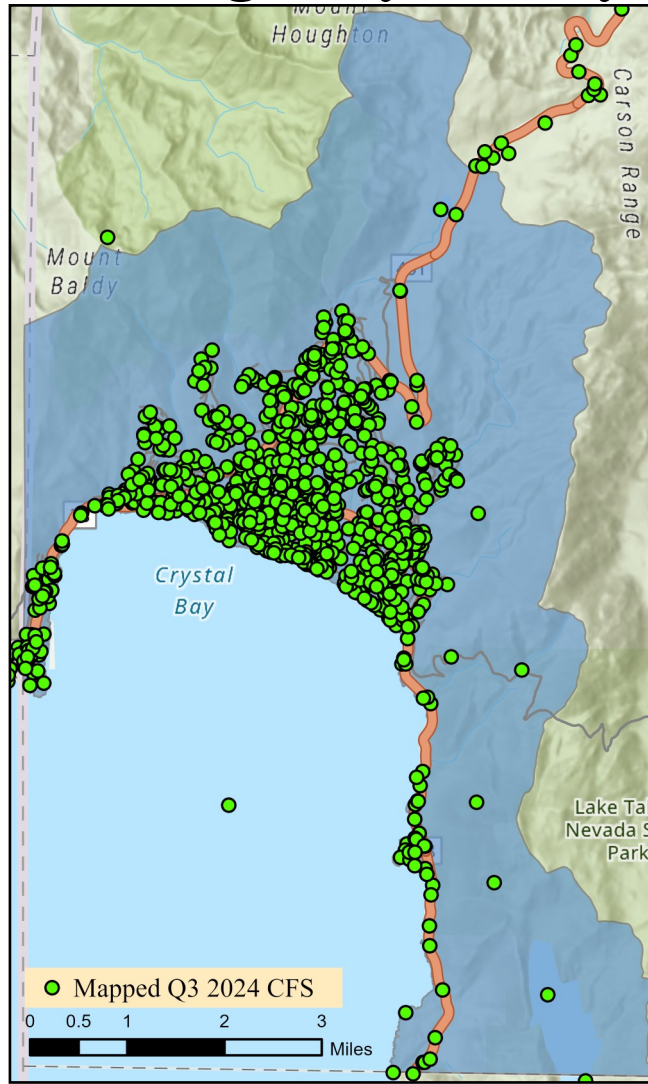
Offense Categories	Q3	3yr Avg	Up/Down
All Other Offenses	1	3	↓
Animal Cruelty	0	0	●
Arson	0	0	●
Assault Offenses	2	0	↑
Bad Checks	0	0	●
Bribery	0	0	●
Burglary	0	0	●
Counterfeiting/Forgery	0	0	●
Curfew/Loitering/Vagrancy	0	0	●
Destruction/Damage/Vandalism	0	1	↓
Disorderly Conduct	0	1	↓
Driving Under the Influence	0	0	●
Drug Equipment Violations	0	0	●
Drug/Narcotic Violations	0	0	●
Drunkenness	0	0	●
Embezzlement	0	0	●
Extortion/Blackmail	0	0	●
Family Offenses (Nonviolent)	0	0	●
Fraud Offenses	0	0	●
Gambling Offenses	0	0	●

Offense Categories	Q3	3yr Avg	Up/Down
Homicide Offenses	0	0	●
Human Trafficking Offenses	0	0	●
Kidnapping/Abduction	1	0	↑
Larceny/Theft Offenses	0	2	↓
Liquor Law Violations	0	0	●
Motor Vehicle Theft	0	1	↓
Peeping Tom	0	0	●
Pornography/Obscene Material	0	0	●
Prostitution Offenses	0	0	●
Robbery	0	0	●
Sex Offenses	0	1	↓
Sex Offenses, Nonforcible	0	0	●
Stolen Property Offenses	0	0	●
Trespass of Real Property	0	2	↓
Weapon Law Violations	0	0	●

CFS Status	Q3	3yr Avg	Up/Down
Dispatched	44	54	↓
Initiated	772	590	↑
Unspecified	80	63	↑
Total	896	708	↑

Note: Initiated CFS are defined by whether the created date and time listed in the CFS match the on scene date and time entered by dispatch. Additionally, follow up and assignment CFS types are included in this category. Dispatched CFS are defined by whether an on scene time is listed in the CFS, and the CFS is not initially defined as initiated. Unspecified CFS include CFS with no on scene date and time information.

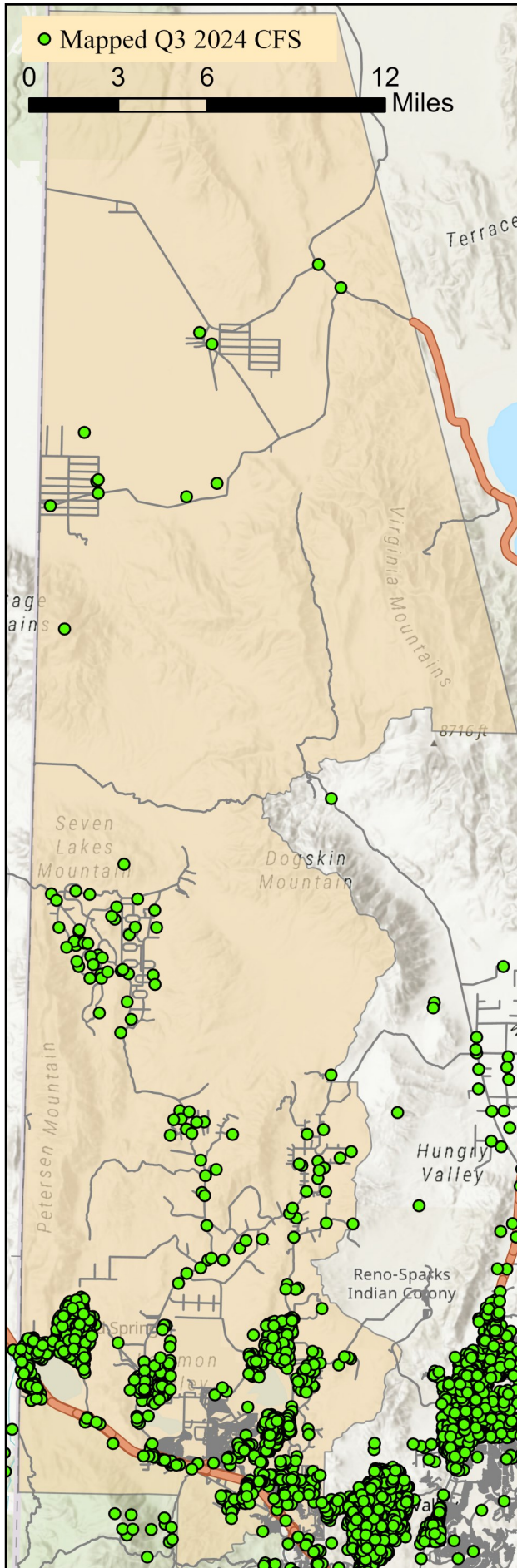
Incline Village/Crystal Bay CAB



Offense Categories	Q3	3yr Avg	Up/Down	Offense Categories	Q3	3yr Avg	Up/Down
All Other Offenses	16	21	↓	Homicide Offenses	0	0	●
Animal Cruelty	0	1	↓	Human Trafficking Offenses	0	0	●
Arson	0	0	●	Kidnapping/Abduction	0	0	●
Assault Offenses	22	12	↑	Larceny/Theft Offenses	17	13	↑
Bad Checks	0	0	●	Liquor Law Violations	1	1	●
Bribery	0	0	●	Motor Vehicle Theft	2	4	↓
Burglary	7	4	↑	Peeping Tom	0	0	●
Counterfeiting/Forgery	0	1	↓	Pornography/Obscene Material	0	0	●
Curfew/Loitering/Vagrancy	0	0	●	Prostitution Offenses	0	0	●
Destruction/Damage/Vandalism	12	13	↓	Robbery	0	1	↓
Disorderly Conduct	0	1	↓	Sex Offenses	2	1	↑
Driving Under the Influence	8	7	↑	Sex Offenses, Nonforcible	0	0	●
Drug Equipment Violations	4	3	↑	Stolen Property Offenses	2	2	●
Drug/Narcotic Violations	3	4	↓	Trespass of Real Property	4	4	●
Drunkenness	0	0	●	Weapon Law Violations	1	1	●
Embezzlement	3	1	↑	CFS Status	Q3	3yr Avg	Up/Down
Extortion/Blackmail	1	0	↑	Dispatched	760	766	↓
Family Offenses (Nonviolent)	0	1	↓	Initiated	1,963	2,080	↓
Fraud Offenses	3	12	↓	Unspecified	1,108	1,115	↓
Gambling Offenses	0	0	●	Total	3,831	3,961	↓

Note: Initiated CFS are defined by whether the created date and time listed in the CFS match the on scene date and time entered by dispatch. Additionally, follow up and assignment CFS types are included in this category. Dispatched CFS are defined by whether an on scene time is listed in the CFS, and the CFS is not initially defined as initiated. Unspecified CFS include CFS with no on scene date and time information.

North Valleys CAB

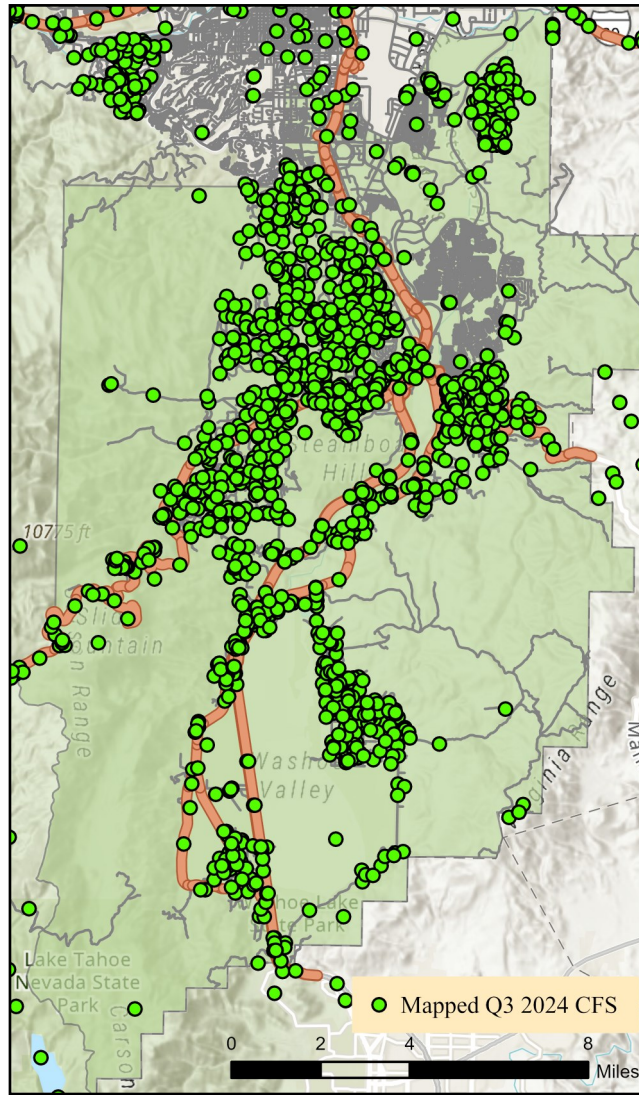


Offense Categories	Q3	3yr Avg	Up/Down
All Other Offenses	65	58	↑
Animal Cruelty	0	1	↓
Arson	1	2	↓
Assault Offenses	73	43	↑
Bad Checks	0	0	○
Bribery	0	0	○
Burglary	8	12	↓
Counterfeiting/Forgery	1	2	↓
Curfew/Loitering/Vagrancy	0	1	↓
Destruction/Damage/Vandalism	37	23	↑
Disorderly Conduct	16	4	↑
Driving Under the Influence	14	11	↑
Drug Equipment Violations	12	11	↑
Drug/Narcotic Violations	10	15	↓
Drunkenness	0	1	↓
Embezzlement	2	1	↑
Extortion/Blackmail	2	1	↑
Family Offenses (Nonviolent)	6	9	↓
Fraud Offenses	20	17	↑
Gambling Offenses	0	0	○

Offense Categories	Q3	3yr Avg	Up/Down
Homicide Offenses	0	0	○
Human Trafficking Offenses	0	0	○
Kidnapping/Abduction	0	1	↓
Larceny/Theft Offenses	17	27	↓
Liquor Law Violations	1	4	↓
Motor Vehicle Theft	3	7	↓
Peeping Tom	0	0	○
Pornography/Obscene Material	1	1	○
Prostitution Offenses	0	0	○
Robbery	3	2	↑
Sex Offenses	7	6	↑
Sex Offenses, Nonforcible	0	1	↓
Stolen Property Offenses	6	3	↑
Trespass of Real Property	2	4	↓
Weapon Law Violations	7	6	↑
CFS Status	Q3	3yr Avg	Up/Down
Dispatched	786	806	↓
Initiated	879	683	↑
Unspecified	1,046	829	↑
Total	2,711	2,318	↑

Note: Initiated CFS are defined by whether the created date and time listed in the CFS match the on scene date and time entered by dispatch. Additionally, follow up and assignment CFS types are included in this category. Dispatched CFS are defined by whether an on scene time is listed in the CFS, and the CFS is not initially defined as initiated. Unspecified CFS include CFS with no on scene date and time information.

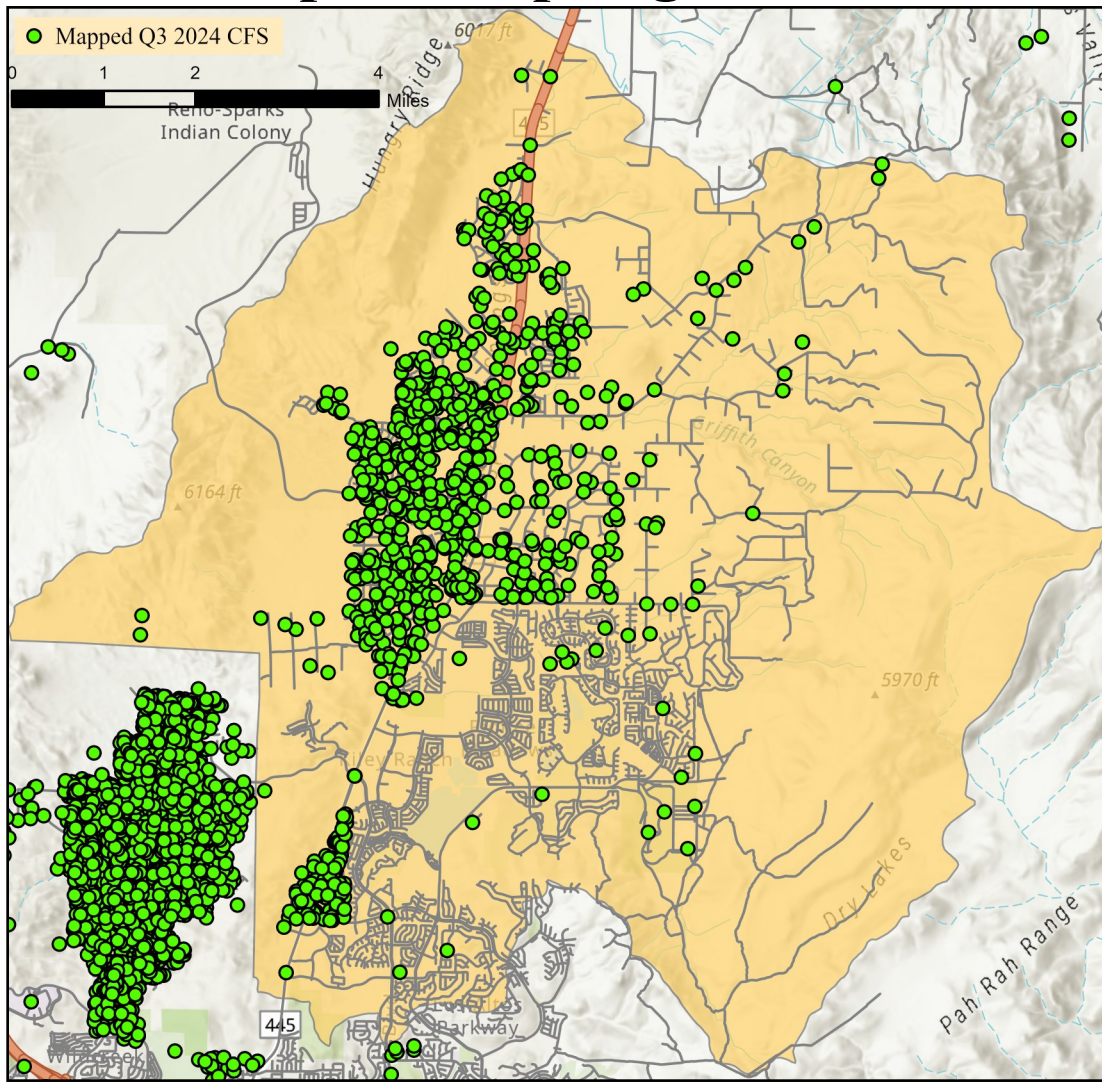
South Truckee Meadows/Washoe Valley CAB



Offense Categories	Q3	3yr Avg	Up/Down	Offense Categories	Q3	3yr Avg	Up/Down
All Other Offenses	34	31	↑	Homicide Offenses	0	1	↓
Animal Cruelty	0	0	●	Human Trafficking Offenses	0	1	↓
Arson	0	2	↓	Kidnapping/Abduction	1	1	●
Assault Offenses	33	25	↑	Larceny/Theft Offenses	21	33	↓
Bad Checks	0	0	●	Liquor Law Violations	1	3	↓
Bribery	0	0	●	Motor Vehicle Theft	4	5	↓
Burglary	17	7	↑	Peeping Tom	0	0	●
Counterfeiting/Forgery	2	4	↓	Pornography/Obscene Material	1	1	●
Curfew/Loitering/Vagrancy	0	1	↓	Prostitution Offenses	0	0	●
Destruction/Damage/Vandalism	16	23	↓	Robbery	0	1	↓
Disorderly Conduct	0	5	↓	Sex Offenses	1	4	↓
Driving Under the Influence	10	13	↓	Sex Offenses, Nonforcible	0	0	●
Drug Equipment Violations	8	8	●	Stolen Property Offenses	3	2	↑
Drug/Narcotic Violations	11	10	↑	Trespass of Real Property	7	3	↑
Drunkenness	0	0	●	Weapon Law Violations	3	2	↑
Embezzlement	0	1	↓	CFS Status	Q3	3yr Avg	Up/Down
Extortion/Blackmail	6	2	↑	Dispatched	849	787	↑
Family Offenses (Nonviolent)	1	4	↓	Initiated	867	974	↓
Fraud Offenses	39	29	↑	Unspecified	1,384	1,107	↑
Gambling Offenses	0	0	●	Total	3,100	2,868	↑

Note: Initiated CFS are defined by whether the created date and time listed in the CFS match the on scene date and time entered by dispatch. Additionally, follow up and assignment CFS types are included in this category. Dispatched CFS are defined by whether an on scene time is listed in the CFS, and the CFS is not initially defined as initiated. Unspecified CFS include CFS with no on scene date and time information.

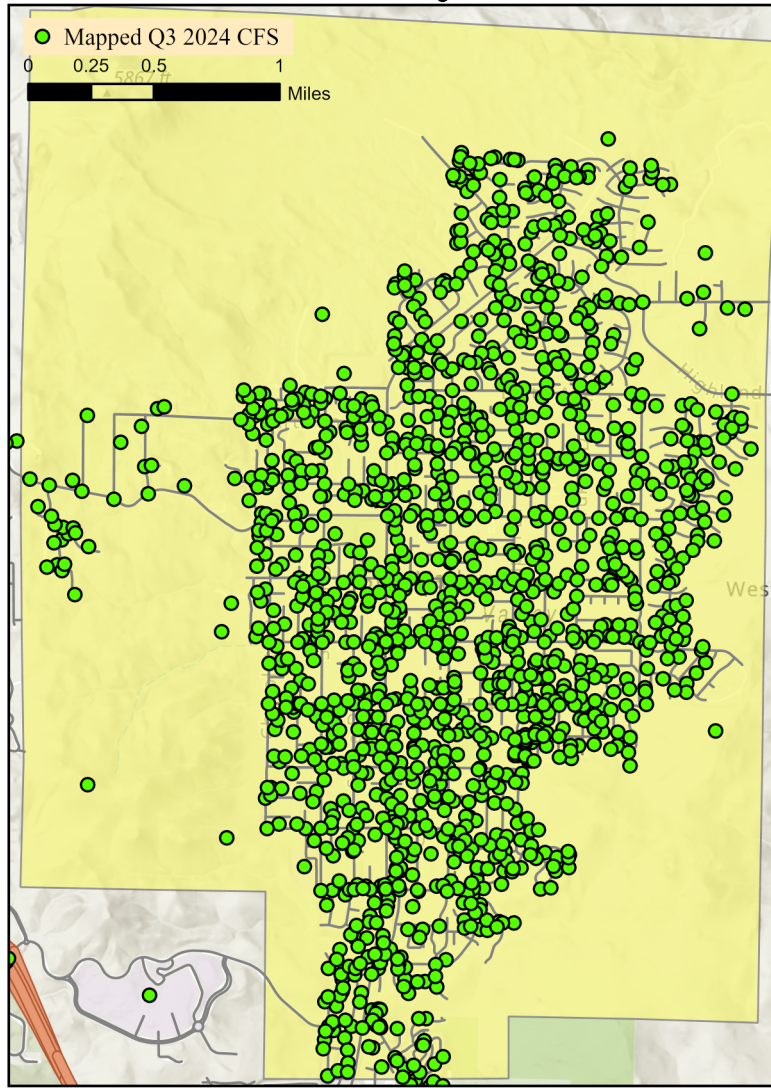
Spanish Springs CAB



Offense Categories	Q3	3yr Avg	Up/Down	Offense Categories	Q3	3yr Avg	Up/Down
All Other Offenses	18	20	↓	Homicide Offenses	0	0	●
Animal Cruelty	0	0	●	Human Trafficking Offenses	0	0	●
Arson	2	1	↑	Kidnapping/Abduction	0	1	↓
Assault Offenses	30	23	↑	Larceny/Theft Offenses	9	21	↓
Bad Checks	0	0	●	Liquor Law Violations	0	1	↓
Bribery	0	0	●	Motor Vehicle Theft	0	4	↓
Burglary	6	7	↓	Peeping Tom	0	0	●
Counterfeiting/Forgery	0	2	↓	Pornography/Obscene Material	1	2	↓
Curfew/Loitering/Vagrancy	0	0	●	Prostitution Offenses	0	0	●
Destruction/Damage/Vandalism	24	18	↑	Robbery	0	1	↓
Disorderly Conduct	1	2	↓	Sex Offenses	8	4	↑
Driving Under the Influence	14	8	↑	Sex Offenses, Nonforcible	0	0	●
Drug Equipment Violations	4	3	↑	Stolen Property Offenses	0	3	↓
Drug/Narcotic Violations	3	4	↓	Trespass of Real Property	0	3	↓
Drunkenness	0	0	●	Weapon Law Violations	5	2	↑
Embezzlement	1	4	↓	CFS Status	Q3	3yr Avg	Up/Down
Extortion/Blackmail	2	2	●	Dispatched	503	509	↓
Family Offenses (Nonviolent)	5	2	↑	Initiated	655	378	↑
Fraud Offenses	10	15	↓	Unspecified	781	657	↑
Gambling Offenses	0	0	●	Total	1,939	1,544	↑

Note: Initiated CFS are defined by whether the created date and time listed in the CFS match the on scene date and time entered by dispatch. Additionally, follow up and assignment CFS types are included in this category. Dispatched CFS are defined by whether an on scene time is listed in the CFS, and the CFS is not initially defined as initiated. Unspecified CFS include CFS with no on scene date and time information.

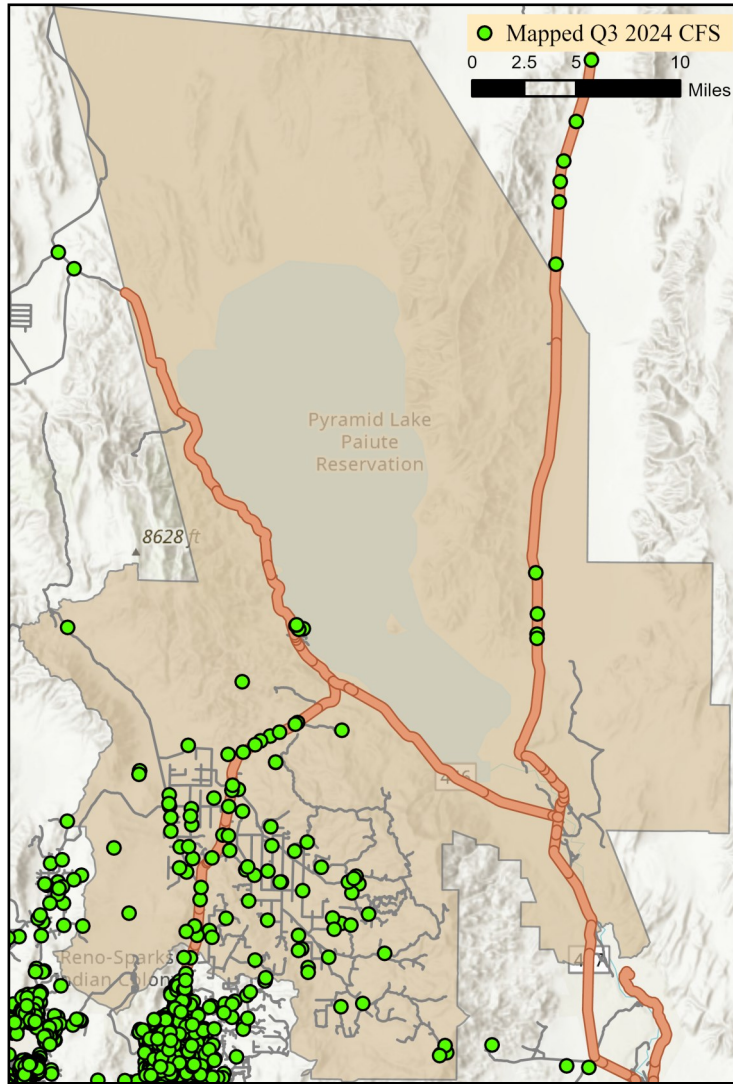
Sun Valley CAB



Offense Categories	Q3	3yr Avg	Up/Down	Offense Categories	Q3	3yr Avg	Up/Down
All Other Offenses	66	114	↓	Homicide Offenses	0	1	↓
Animal Cruelty	1	2	↓	Human Trafficking Offenses	0	0	●
Arson	3	2	↑	Kidnapping/Abduction	4	1	↑
Assault Offenses	86	65	↑	Larceny/Theft Offenses	23	31	↓
Bad Checks	0	0	●	Liquor Law Violations	2	4	↓
Bribery	0	0	●	Motor Vehicle Theft	6	12	↓
Burglary	10	10	●	Peeping Tom	0	0	●
Counterfeiting/Forgery	1	4	↓	Pornography/Obscene Material	2	0	↑
Curfew/Loitering/Vagrancy	0	2	↓	Prostitution Offenses	0	0	●
Destruction/Damage/Vandalism	34	31	↑	Robbery	2	5	↓
Disorderly Conduct	6	3	↑	Sex Offenses	17	9	↑
Driving Under the Influence	15	22	↓	Sex Offenses, Nonforcible	2	1	↑
Drug Equipment Violations	15	25	↓	Stolen Property Offenses	8	9	↓
Drug/Narcotic Violations	28	34	↓	Trespass of Real Property	8	7	↑
Drunkenness	0	0	●	Weapon Law Violations	14	12	↑
Embezzlement	2	1	↑	CFS Status	Q3	3yr Avg	Up/Down
Extortion/Blackmail	3	3	●	Dispatched	1,190	1,227	↓
Family Offenses (Nonviolent)	10	12	↓	Initiated	1,374	1,685	↓
Fraud Offenses	20	19	↑	Unspecified	1,075	932	↑
Gambling Offenses	0	0	●	Total	3,639	3,844	↓

Note: Initiated CFS are defined by whether the created date and time listed in the CFS match the on scene date and time entered by dispatch. Additionally, follow up and assignment CFS types are included in this category. Dispatched CFS are defined by whether an on scene time is listed in the CFS, and the CFS is not initially defined as initiated. Unspecified CFS include CFS with no on scene date and time information.

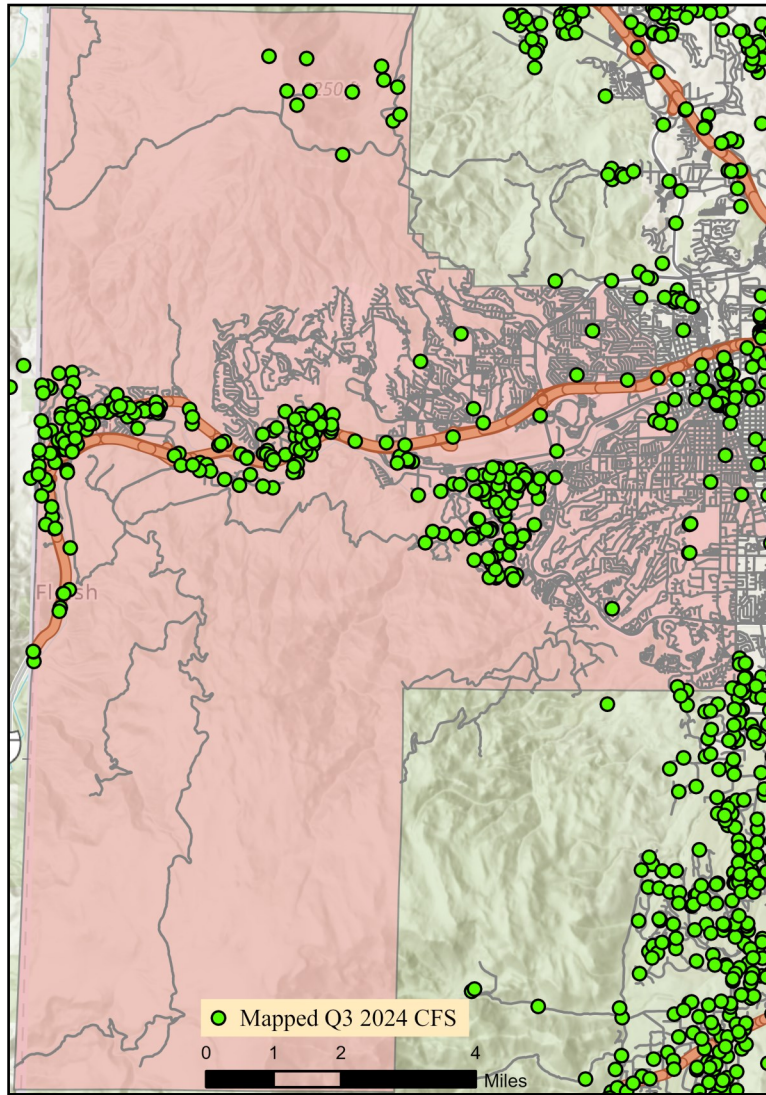
Warm Springs/Rural CAB



Offense Categories	Q3	3yr Avg	Up/Down	Offense Categories	Q3	3yr Avg	Up/Down
All Other Offenses	3	2	↑	Homicide Offenses	1	0	↑
Animal Cruelty	0	0	●	Human Trafficking Offenses	0	0	●
Arson	0	0	●	Kidnapping/Abduction	1	0	↑
Assault Offenses	4	3	↑	Larceny/Theft Offenses	0	1	↓
Bad Checks	0	0	●	Liquor Law Violations	0	0	●
Bribery	0	0	●	Motor Vehicle Theft	0	2	↓
Burglary	0	1	↓	Peeping Tom	0	0	●
Counterfeiting/Forgery	0	0	●	Pornography/Obscene Material	0	0	●
Curfew/Loitering/Vagrancy	0	0	●	Prostitution Offenses	0	0	●
Destruction/Damage/Vandalism	1	2	↓	Robbery	1	0	↑
Disorderly Conduct	1	0	↑	Sex Offenses	0	0	●
Driving Under the Influence	1	2	↓	Sex Offenses, Nonforcible	0	0	●
Drug Equipment Violations	0	1	↓	Stolen Property Offenses	0	1	↓
Drug/Narcotic Violations	0	0	●	Trespass of Real Property	0	0	●
Drunkenness	0	0	●	Weapon Law Violations	3	1	↑
Embezzlement	0	0	●	CFS Status	Q3	3yr Avg	Up/Down
Extortion/Blackmail	0	0	●	Dispatched	56	48	↑
Family Offenses (Nonviolent)	0	1	↓	Initiated	66	55	↑
Fraud Offenses	0	1	↓	Unspecified	96	77	↑
Gambling Offenses	0	0	●	Total	218	180	↑

Note: Initiated CFS are defined by whether the created date and time listed in the CFS match the on scene date and time entered by dispatch. Additionally, follow up and assignment CFS types are included in this category. Dispatched CFS are defined by whether an on scene time is listed in the CFS, and the CFS is not initially defined as initiated. Unspecified CFS include CFS with no on scene date and time information.

West Truckee Meadows/Verdi CAB



Offense Categories	Q3	3yr Avg	Up/Down	Offense Categories	Q3	3yr Avg	Up/Down
All Other Offenses	12	12	●	Homicide Offenses	0	1	↓
Animal Cruelty	0	0	●	Human Trafficking Offenses	0	0	●
Arson	1	0	↑	Kidnapping/Abduction	0	1	↓
Assault Offenses	1	4	↓	Larceny/Theft Offenses	4	11	↓
Bad Checks	0	0	●	Liquor Law Violations	0	2	↓
Bribery	0	0	●	Motor Vehicle Theft	1	2	↓
Burglary	5	5	●	Peeping Tom	0	0	●
Counterfeiting/Forgery	0	1	↓	Pornography/Obscene Material	1	0	↑
Curfew/Loitering/Vagrancy	0	1	↓	Prostitution Offenses	0	0	●
Destruction/Damage/Vandalism	6	7	↓	Robbery	1	1	●
Disorderly Conduct	0	1	↓	Sex Offenses	1	1	●
Driving Under the Influence	2	2	●	Sex Offenses, Nonforcible	0	0	●
Drug Equipment Violations	3	5	↓	Stolen Property Offenses	2	3	↓
Drug/Narcotic Violations	2	10	↓	Trespass of Real Property	1	2	↓
Drunkenness	0	0	●	Weapon Law Violations	2	2	●
Embezzlement	0	1	↓	CFS Status	Q3	3yr Avg	Up/Down
Extortion/Blackmail	0	0	●	Dispatched	174	186	↓
Family Offenses (Nonviolent)	0	1	↓	Initiated	274	344	↓
Fraud Offenses	3	5	↓	Unspecified	252	179	↑
Gambling Offenses	0	0	●	Total	700	709	↓

Note: Initiated CFS are defined by whether the created date and time listed in the CFS match the on scene date and time entered by dispatch. Additionally, follow up and assignment CFS types are included in this category. Dispatched CFS are defined by whether an on scene time is listed in the CFS, and the CFS is not initially defined as initiated. Unspecified CFS include CFS with no on scene date and time information.