

Washoe County Sheriff's Office

CAB Data

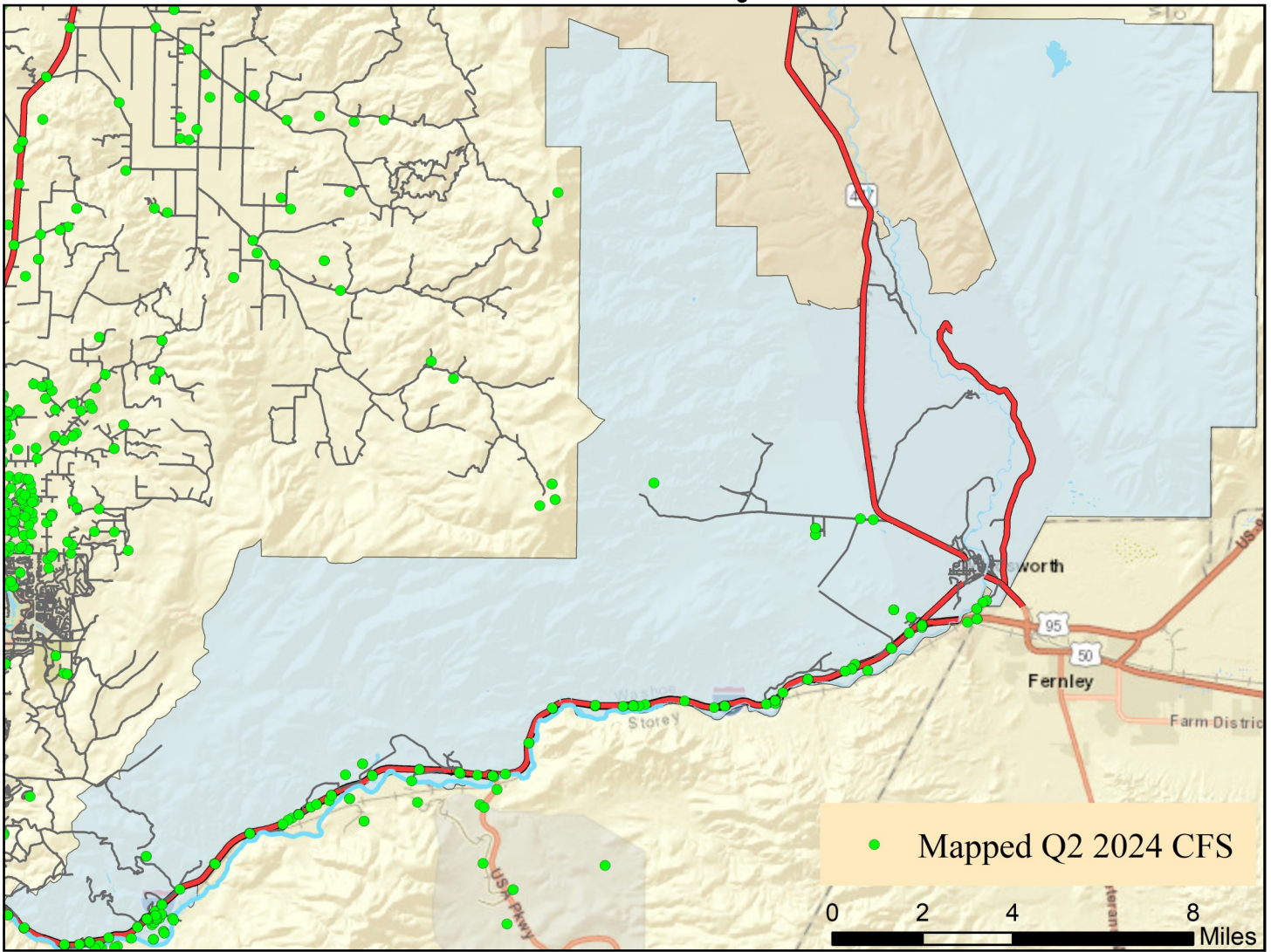
Quarter 2 2024



Note: Calls for service (CFS) and case data reflect WCSO jurisdictions. CFS and cases are mapped with useable coordinates only.

Published: 7/18/2024

East Truckee Canyon CAB

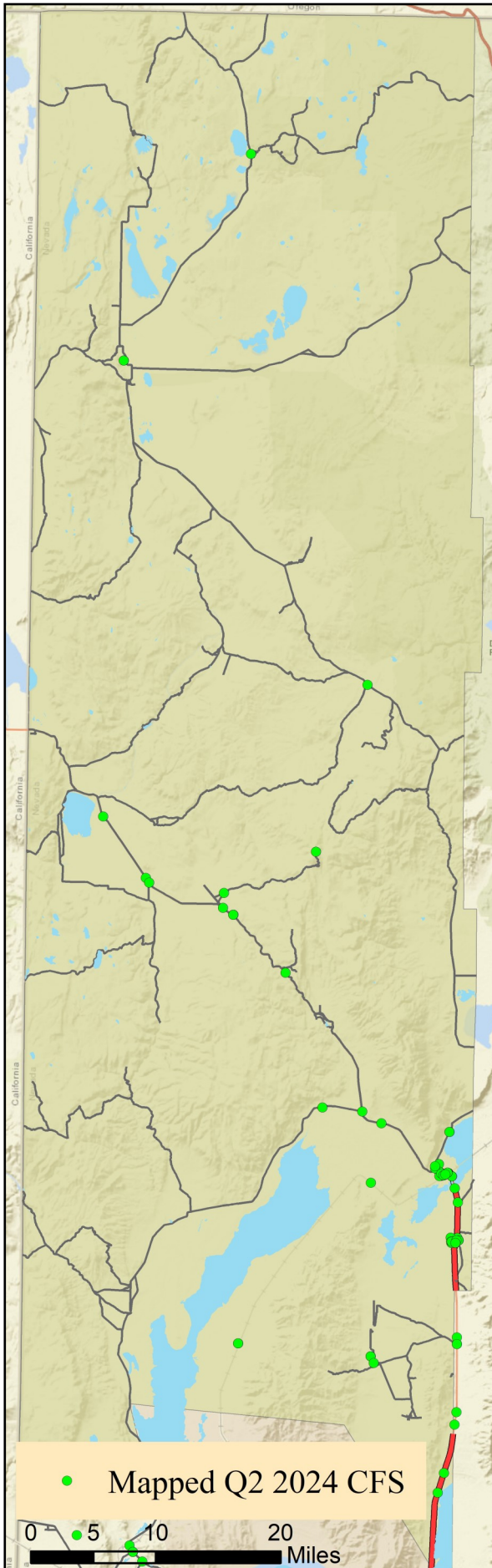


Offense Categories	Q2	3yr Avg	Up/Down
All Other Offenses	0	3	↓
Animal Cruelty	0	0	●
Arson	0	0	●
Assault Offenses	0	1	↓
Bad Checks	0	0	●
Bribery	0	0	●
Burglary	0	1	↓
Counterfeiting/Forgery	0	0	●
Curfew/Loitering/Vagrancy	0	0	●
Destruction/Damage/Vandalism	0	1	↓
Disorderly Conduct	0	0	●
Driving Under the Influence	0	0	●
Drug Equipment Violations	0	1	↓
Drug/Narcotic Violations	9	3	↑
Drunkness	0	0	●
Embezzlement	0	0	●
Extortion/Blackmail	0	0	●
Family Offenses (Nonviolent)	0	0	●
Fraud Offenses	0	0	●
Gambling Offenses	0	0	●

Offense Categories	Q2	3yr Avg	Up/Down
Homicide Offenses	0	0	●
Human Trafficking Offenses	0	0	●
Kidnapping/Abduction	0	0	●
Larceny/Theft Offenses	0	4	↓
Liquor Law Violations	0	0	●
Motor Vehicle Theft	1	0	↑
Peeping Tom	0	0	●
Pornography/Obscene Material	0	0	●
Prostitution Offenses	0	0	●
Robbery	0	0	●
Sex Offenses	0	0	●
Sex Offenses, Nonforcible	0	0	●
Stolen Property Offenses	0	0	●
Trespass of Real Property	0	0	●
Weapon Law Violations	1	0	↑
CFS Status	Q2	3yr Avg	Up/Down
Dispatched	60	60	●
Initiated	886	129	↑
Unspecified	202	165	↑
Total	1,148	354	↑

Note: Initiated CFS are defined by whether the created date and time listed in the CFS match the on scene date and time entered by dispatch. Additionally, follow up and assignment CFS types are included in this category. Dispatched CFS are defined by whether an on scene time is listed in the CFS, and the CFS is not initially defined as initiated. Unspecified CFS include CFS with no on scene date and time information.

Gerlach/Empire CAB



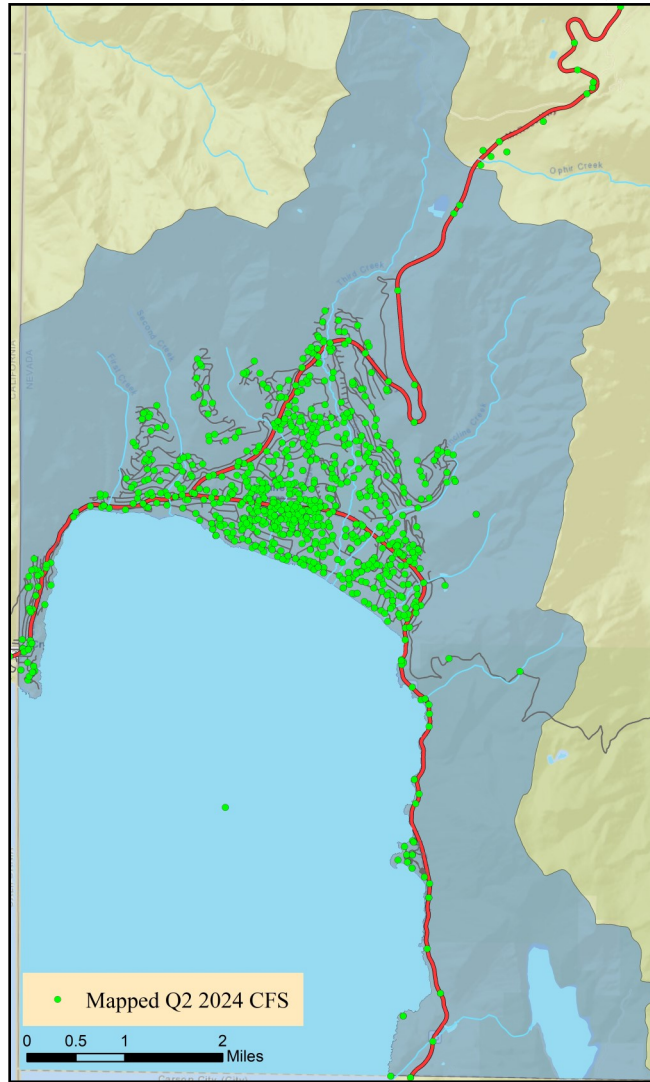
Offense Categories	Q2	3yr Avg	Up/Down
All Other Offenses	0	0	●
Animal Cruelty	0	0	●
Arson	0	0	●
Assault Offenses	0	1	↓
Bad Checks	0	0	●
Bribery	0	0	●
Burglary	0	0	●
Counterfeiting/Forgery	0	0	●
Curfew/Loitering/Vagrancy	0	0	●
Destruction/Damage/Vandalism	0	0	●
Disorderly Conduct	0	0	●
Driving Under the Influence	0	0	●
Drug Equipment Violations	0	0	●
Drug/Narcotic Violations	0	0	●
Drunkenness	0	0	●
Embezzlement	0	0	●
Extortion/Blackmail	0	0	●
Family Offenses (Nonviolent)	0	0	●
Fraud Offenses	0	0	●
Gambling Offenses	0	0	●

Offense Categories	Q2	3yr Avg	Up/Down
Homicide Offenses	0	0	●
Human Trafficking Offenses	0	0	●
Kidnapping/Abduction	0	0	●
Larceny/Theft Offenses	0	0	●
Liquor Law Violations	0	0	●
Motor Vehicle Theft	0	0	●
Peeping Tom	0	0	●
Pornography/Obscene Material	0	0	●
Prostitution Offenses	0	0	●
Robbery	0	0	●
Sex Offenses	0	0	●
Sex Offenses, Nonforcible	0	0	●
Stolen Property Offenses	0	0	●
Trespass of Real Property	0	0	●
Weapon Law Violations	0	1	↓

CFS Status	Q2	3yr Avg	Up/Down
Dispatched	18	26	↓
Initiated	60	194	↓
Unspecified	36	25	↑
Total	114	245	↓

Note: Initiated CFS are defined by whether the created date and time listed in the CFS match the on scene date and time entered by dispatch. Additionally, follow up and assignment CFS types are included in this category. Dispatched CFS are defined by whether an on scene time is listed in the CFS, and the CFS is not initially defined as initiated. Unspecified CFS include CFS with no on scene date and time information.

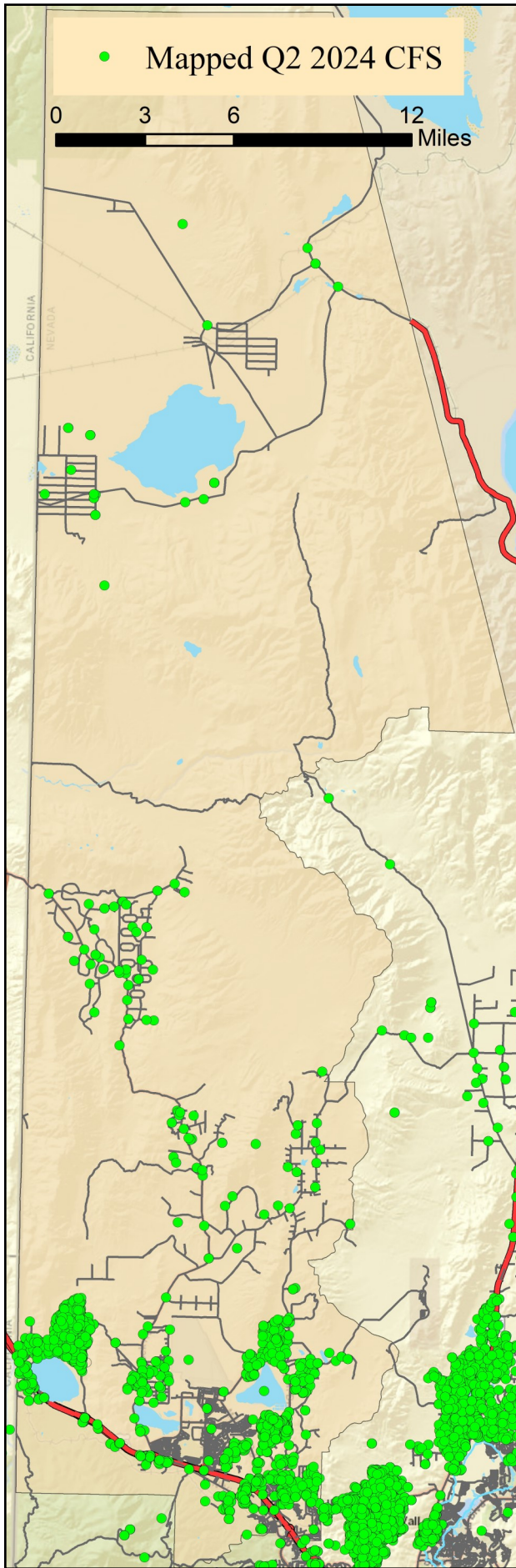
Incline Village/Crystal Bay CAB



Offense Categories	Q2	3yr Avg	Up/Down	Offense Categories	Q2	3yr Avg	Up/Down
All Other Offenses	10	10	●	Homicide Offenses	0	0	●
Animal Cruelty	0	0	●	Human Trafficking Offenses	0	0	●
Arson	0	0	●	Kidnapping/Abduction	1	1	●
Assault Offenses	10	10	●	Larceny/Theft Offenses	9	8	↑
Bad Checks	0	0	●	Liquor Law Violations	0	1	↓
Bribery	0	0	●	Motor Vehicle Theft	0	0	●
Burglary	3	3	●	Peeping Tom	0	0	●
Counterfeiting/Forgery	0	1	↓	Pornography/Obscene Material	0	0	●
Curfew/Loitering/Vagrancy	0	0	●	Prostitution Offenses	0	1	↓
Destruction/Damage/Vandalism	8	8	●	Robbery	0	0	●
Disorderly Conduct	0	0	●	Sex Offenses	4	3	↑
Driving Under the Influence	7	4	↑	Sex Offenses, Nonforcible	0	0	●
Drug Equipment Violations	2	3	↓	Stolen Property Offenses	1	1	●
Drug/Narcotic Violations	2	5	↓	Trespass of Real Property	0	3	↓
Drunkenness	0	0	●	Weapon Law Violations	0	0	●
Embezzlement	1	0	↑	CFS Status	Q2	3yr Avg	Up/Down
Extortion/Blackmail	1	0	↑	Dispatched	550	638	↓
Family Offenses (Nonviolent)	1	2	↓	Initiated	1,795	1,947	↓
Fraud Offenses	7	8	↓	Unspecified	637	831	↓
Gambling Offenses	0	0	●	Total	2,982	3,416	↓

Note: Initiated CFS are defined by whether the created date and time listed in the CFS match the on scene date and time entered by dispatch. Additionally, follow up and assignment CFS types are included in this category. Dispatched CFS are defined by whether an on scene time is listed in the CFS, and the CFS is not initially defined as initiated. Unspecified CFS include CFS with no on scene date and time information.

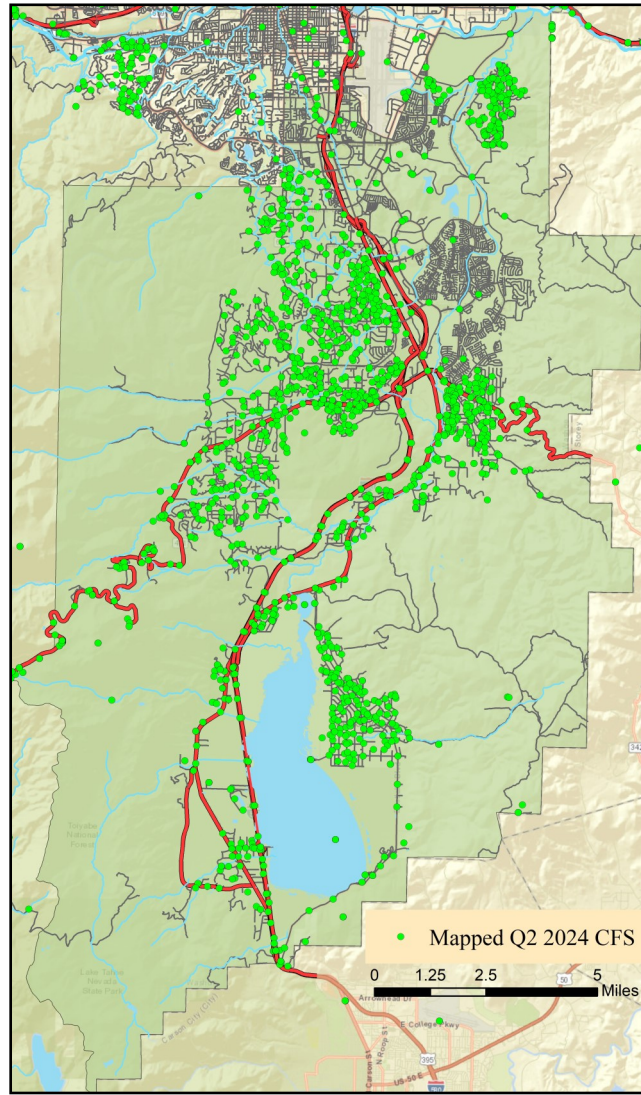
North Valleys CAB



Offense Categories	Q2	3yr Avg	Up/Down
All Other Offenses	47	61	↓
Animal Cruelty	0	0	●
Arson	1	1	●
Assault Offenses	46	41	↑
Bad Checks	0	0	●
Bribery	0	0	●
Burglary	7	8	↓
Counterfeiting/Forgery	1	2	↓
Curfew/Loitering/Vagrancy	0	1	↓
Destruction/Damage/Vandalism	32	26	↑
Disorderly Conduct	7	5	↑
Driving Under the Influence	17	14	↑
Drug Equipment Violations	11	11	●
Drug/Narcotic Violations	8	17	↓
Drunkenness	0	0	●
Embezzlement	0	0	●
Extortion/Blackmail	1	1	●
Family Offenses (Nonviolent)	7	7	●
Fraud Offenses	34	30	↑
Gambling Offenses	0	0	●
Offense Categories	Q2	3yr Avg	Up/Down
Homicide Offenses	0	1	↓
Human Trafficking Offenses	0	0	●
Kidnapping/Abduction	2	2	●
Larceny/Theft Offenses	31	22	↑
Liquor Law Violations	3	1	↑
Motor Vehicle Theft	4	5	↓
Peeping Tom	0	0	●
Pornography/Obscene Material	2	0	↑
Prostitution Offenses	0	0	●
Robbery	2	1	↑
Sex Offenses	14	6	↑
Sex Offenses, Nonforcible	0	0	●
Stolen Property Offenses	8	6	↑
Trespass of Real Property	2	5	↓
Weapon Law Violations	8	6	↑
CFS Status	Q2	3yr Avg	Up/Down
Dispatched	718	820	↓
Initiated	1,045	731	↑
Unspecified	926	827	↑
Total	2,689	2,379	↑

Note: Initiated CFS are defined by whether the created date and time listed in the CFS match the on scene date and time entered by dispatch. Additionally, follow up and assignment CFS types are included in this category. Dispatched CFS are defined by whether an on scene time is listed in the CFS, and the CFS is not initially defined as initiated. Unspecified CFS include CFS with no on scene date and time information.

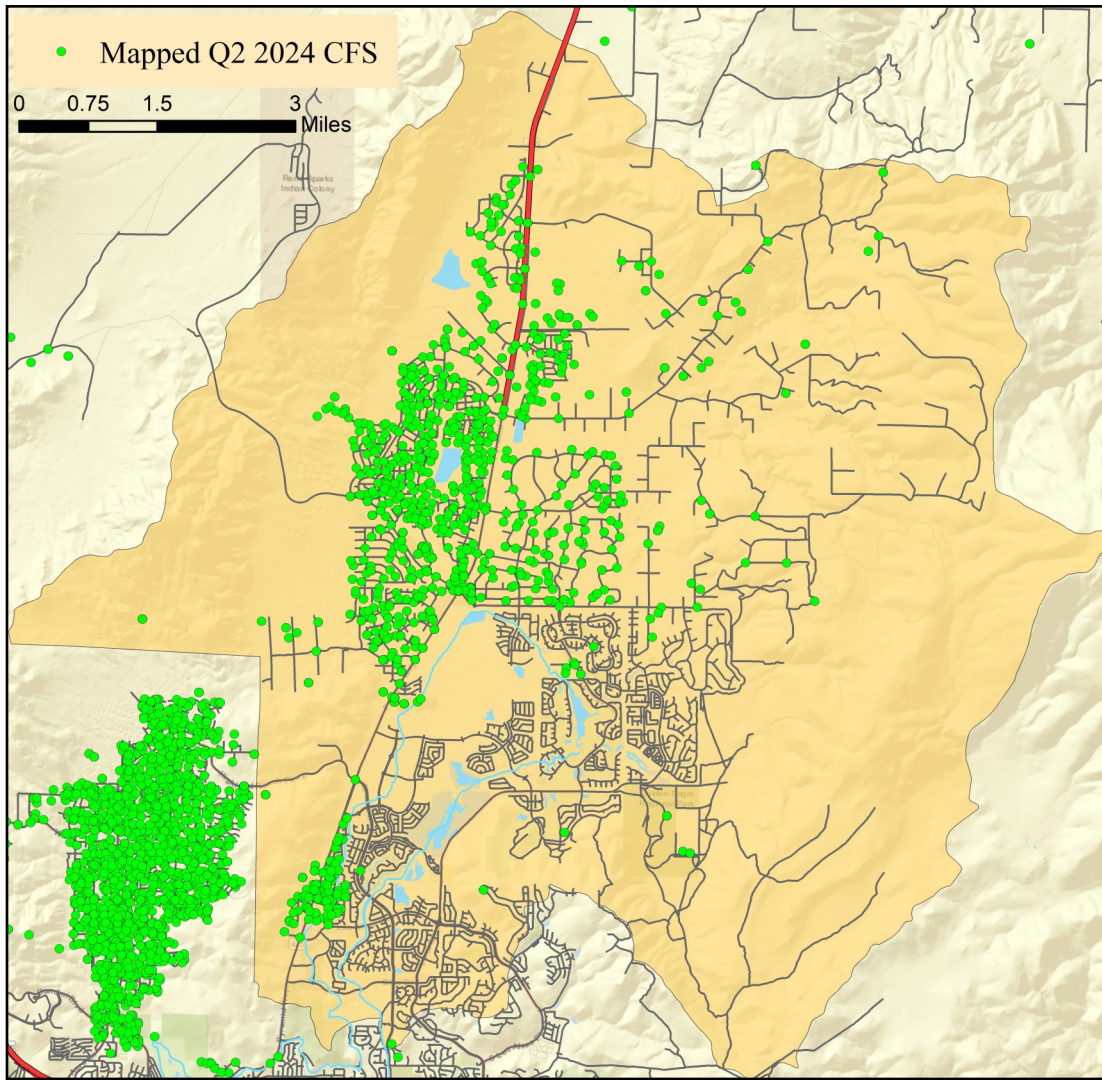
South Truckee Meadows/Washoe Valley CAB



Offense Categories	Q2	3yr Avg	Up/Down	Offense Categories	Q2	3yr Avg	Up/Down
All Other Offenses	37	44	↓	Homicide Offenses	0	0	●
Animal Cruelty	1	0	↑	Human Trafficking Offenses	0	0	●
Arson	0	0	●	Kidnapping/Abduction	2	1	↑
Assault Offenses	39	27	↑	Larceny/Theft Offenses	27	36	↓
Bad Checks	0	0	●	Liquor Law Violations	1	2	↓
Bribery	0	0	●	Motor Vehicle Theft	5	3	↑
Burglary	6	11	↓	Peeping Tom	0	0	●
Counterfeiting/Forgery	4	3	↑	Pornography/Obscene Material	0	1	↓
Curfew/Loitering/Vagrancy	0	0	●	Prostitution Offenses	0	0	●
Destruction/Damage/Vandalism	16	28	↓	Robbery	0	1	↓
Disorderly Conduct	1	2	↓	Sex Offenses	10	7	↑
Driving Under the Influence	13	15	↓	Sex Offenses, Nonforcible	0	0	●
Drug Equipment Violations	10	10	●	Stolen Property Offenses	3	4	↓
Drug/Narcotic Violations	15	13	↑	Trespass of Real Property	4	2	↑
Drunkenness	0	0	●	Weapon Law Violations	4	5	↓
Embezzlement	0	0	●	CFS Status	Q2	3yr Avg	Up/Down
Extortion/Blackmail	1	1	●	Dispatched	714	783	↓
Family Offenses (Nonviolent)	4	7	↓	Initiated	1,044	991	↑
Fraud Offenses	24	44	↓	Unspecified	1,151	1,106	↑
Gambling Offenses	0	0	●	Total	2,909	2,879	↑

Note: Initiated CFS are defined by whether the created date and time listed in the CFS match the on scene date and time entered by dispatch. Additionally, follow up and assignment CFS types are included in this category. Dispatched CFS are defined by whether an on scene time is listed in the CFS, and the CFS is not initially defined as initiated. Unspecified CFS include CFS with no on scene date and time information.

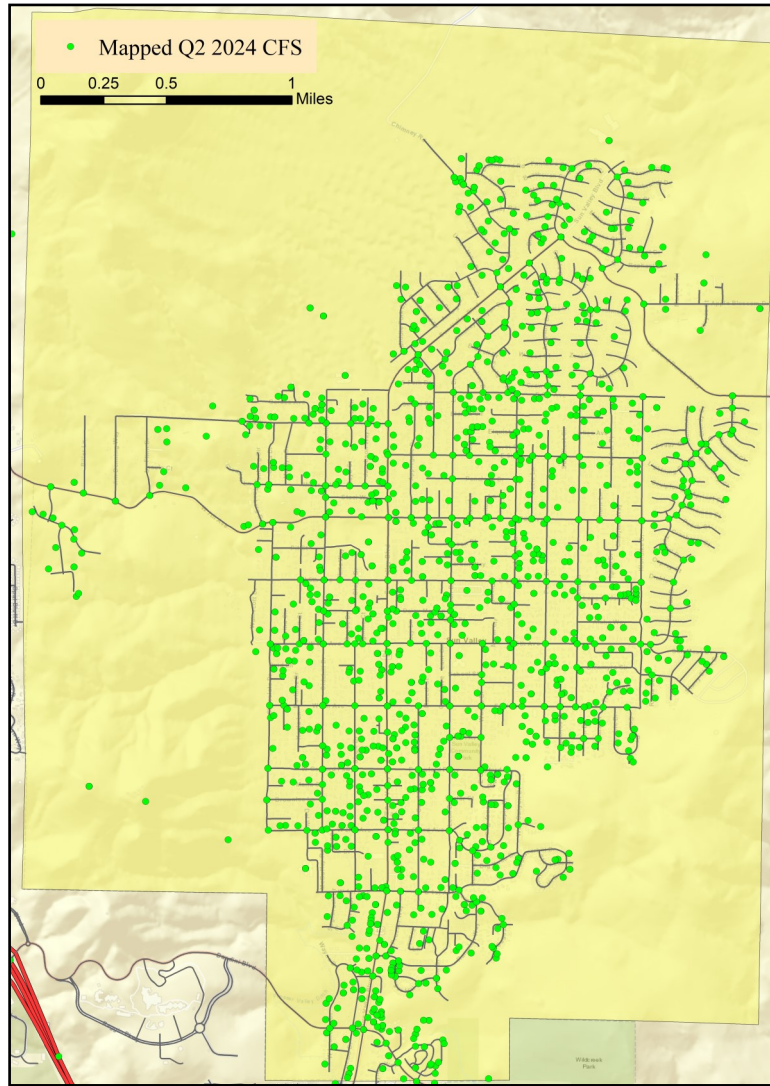
Spanish Springs CAB



Offense Categories	Q2	3yr Avg	Up/Down	Offense Categories	Q2	3yr Avg	Up/Down
All Other Offenses	16	12	↑	Homicide Offenses	0	0	●
Animal Cruelty	0	1	↓	Human Trafficking Offenses	0	0	●
Arson	0	0	●	Kidnapping/Abduction	0	1	↓
Assault Offenses	25	20	↑	Larceny/Theft Offenses	16	19	↓
Bad Checks	0	0	●	Liquor Law Violations	0	1	↓
Bribery	0	0	●	Motor Vehicle Theft	4	2	↑
Burglary	4	7	↓	Peeping Tom	0	0	●
Counterfeiting/Forgery	1	2	↓	Pornography/Obscene Material	0	0	●
Curfew/Loitering/Vagrancy	0	1	↓	Prostitution Offenses	0	0	●
Destruction/Damage/Vandalism	17	20	↓	Robbery	0	1	↓
Disorderly Conduct	3	3	●	Sex Offenses	4	3	↑
Driving Under the Influence	4	6	↓	Sex Offenses, Nonforcible	0	0	●
Drug Equipment Violations	0	5	↓	Stolen Property Offenses	0	0	●
Drug/Narcotic Violations	0	6	↓	Trespass of Real Property	3	2	↑
Drunkness	0	0	●	Weapon Law Violations	3	3	●
Embezzlement	4	1	↑	CFS Status	Q2	3yr Avg	Up/Down
Extortion/Blackmail	0	1	↓	Dispatched	487	477	↑
Family Offenses (Nonviolent)	2	3	↓	Initiated	531	362	↑
Fraud Offenses	16	33	↓	Unspecified	694	668	↑
Gambling Offenses	0	0	●	Total	1,712	1,507	↑

Note: Initiated CFS are defined by whether the created date and time listed in the CFS match the on scene date and time entered by dispatch. Additionally, follow up and assignment CFS types are included in this category. Dispatched CFS are defined by whether an on scene time is listed in the CFS, and the CFS is not initially defined as initiated. Unspecified CFS include CFS with no on scene date and time information.

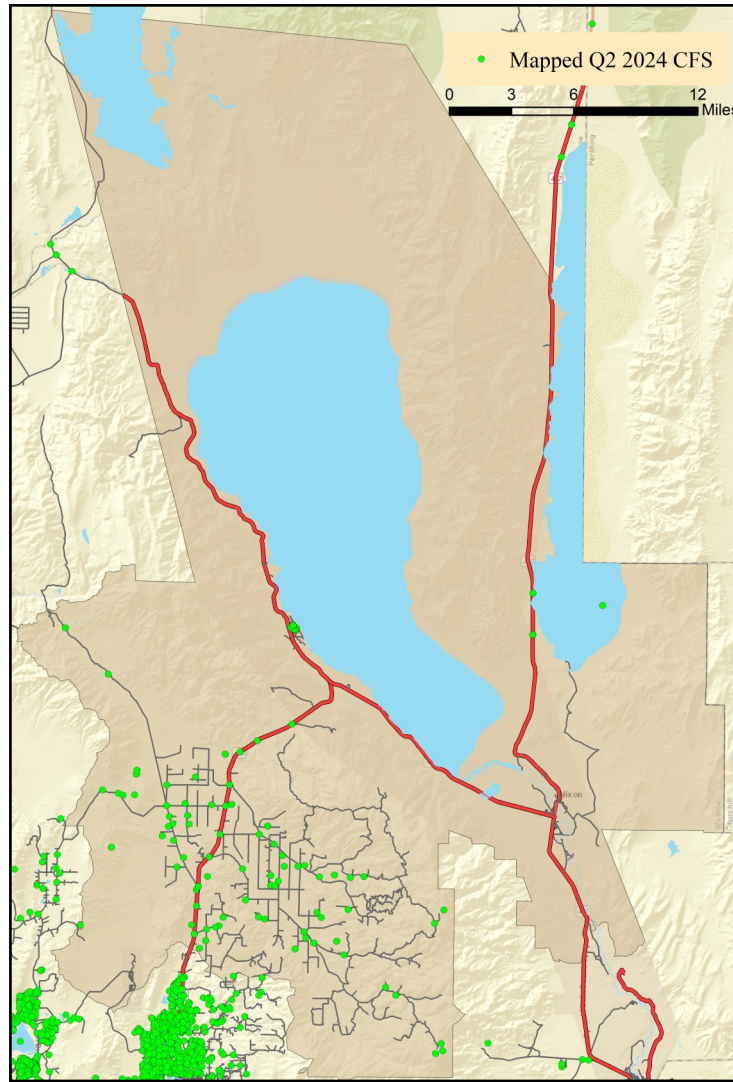
Sun Valley CAB



Offense Categories	Q2	3yr Avg	Up/Down	Offense Categories	Q2	3yr Avg	Up/Down
All Other Offenses	100	112	↓	Homicide Offenses	0	0	●
Animal Cruelty	0	1	↓	Human Trafficking Offenses	0	0	●
Arson	1	1	●	Kidnapping/Abduction	2	2	●
Assault Offenses	80	59	↑	Larceny/Theft Offenses	25	34	↓
Bad Checks	0	0	●	Liquor Law Violations	3	2	↑
Bribery	0	0	●	Motor Vehicle Theft	10	10	●
Burglary	10	11	↓	Peeping Tom	1	0	↑
Counterfeiting/Forgery	1	4	↓	Pornography/Obscene Material	1	0	↑
Curfew/Loitering/Vagrancy	0	1	↓	Prostitution Offenses	0	0	●
Destruction/Damage/Vandalism	34	36	↓	Robbery	4	1	↑
Disorderly Conduct	7	6	↑	Sex Offenses	7	10	↓
Driving Under the Influence	19	20	↓	Sex Offenses, Nonforcible	0	0	●
Drug Equipment Violations	21	29	↓	Stolen Property Offenses	6	8	↓
Drug/Narcotic Violations	23	35	↓	Trespass of Real Property	6	8	↓
Drunkenness	0	0	●	Weapon Law Violations	7	9	↓
Embezzlement	1	1	●	CFS Status	Q2	3yr Avg	Up/Down
Extortion/Blackmail	4	0	↑	Dispatched	986	1,160	↓
Family Offenses (Nonviolent)	9	12	↓	Initiated	1,459	1,510	↓
Fraud Offenses	26	27	↓	Unspecified	907	851	↑
Gambling Offenses	0	0	●	Total	3,352	3,521	↓

Note: Initiated CFS are defined by whether the created date and time listed in the CFS match the on scene date and time entered by dispatch. Additionally, follow up and assignment CFS types are included in this category. Dispatched CFS are defined by whether an on scene time is listed in the CFS, and the CFS is not initially defined as initiated. Unspecified CFS include CFS with no on scene date and time information.

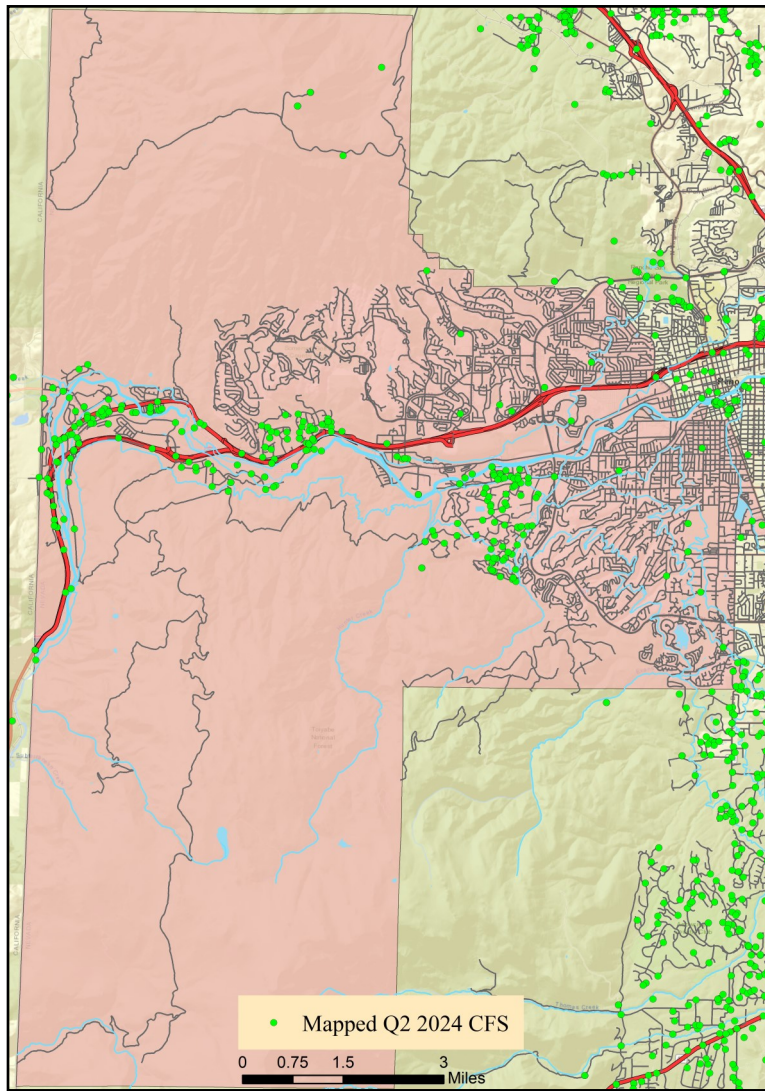
Warm Springs/Rural CAB



Offense Categories	Q2	3yr Avg	Up/Down	Offense Categories	Q2	3yr Avg	Up/Down
All Other Offenses	1	4	↓	Homicide Offenses	0	0	●
Animal Cruelty	0	0	●	Human Trafficking Offenses	0	0	●
Arson	0	0	●	Kidnapping/Abduction	0	0	●
Assault Offenses	4	5	↓	Larceny/Theft Offenses	3	1	↑
Bad Checks	0	0	●	Liquor Law Violations	0	0	●
Bribery	0	0	●	Motor Vehicle Theft	0	1	↓
Burglary	1	0	↑	Peeping Tom	0	0	●
Counterfeiting/Forgery	0	0	●	Pornography/Obscene Material	0	0	●
Curfew/Loitering/Vagrancy	0	0	●	Prostitution Offenses	0	0	●
Destruction/Damage/Vandalism	1	1	●	Robbery	0	0	●
Disorderly Conduct	0	0	●	Sex Offenses	1	1	●
Driving Under the Influence	0	0	●	Sex Offenses, Nonforcible	0	0	●
Drug Equipment Violations	0	0	●	Stolen Property Offenses	0	0	●
Drug/Narcotic Violations	1	1	●	Trespass of Real Property	1	0	↑
Drunkenness	0	0	●	Weapon Law Violations	2	1	↑
Embezzlement	0	0	●	CFS Status	Q2	3yr Avg	Up/Down
Extortion/Blackmail	0	0	●	Dispatched	39	52	↓
Family Offenses (Nonviolent)	0	1	↓	Initiated	48	67	↓
Fraud Offenses	0	3	↓	Unspecified	94	93	↑
Gambling Offenses	0	0	●	Total	181	212	↓

Note: Initiated CFS are defined by whether the created date and time listed in the CFS match the on scene date and time entered by dispatch. Additionally, follow up and assignment CFS types are included in this category. Dispatched CFS are defined by whether an on scene time is listed in the CFS, and the CFS is not initially defined as initiated. Unspecified CFS include CFS with no on scene date and time information.

West Truckee Meadows/Verdi CAB



Offense Categories	Q2	3yr Avg	Up/Down	Offense Categories	Q2	3yr Avg	Up/Down
All Other Offenses	6	12	↓	Homicide Offenses	0	0	●
Animal Cruelty	0	0	●	Human Trafficking Offenses	0	0	●
Arson	0	0	●	Kidnapping/Abduction	0	0	●
Assault Offenses	5	3	↑	Larceny/Theft Offenses	5	8	↓
Bad Checks	0	0	●	Liquor Law Violations	0	0	●
Bribery	0	0	●	Motor Vehicle Theft	0	1	↓
Burglary	4	4	●	Peeping Tom	0	0	●
Counterfeiting/Forgery	1	1	●	Pornography/Obscene Material	0	0	●
Curfew/Loitering/Vagrancy	0	0	●	Prostitution Offenses	0	0	●
Destruction/Damage/Vandalism	8	6	↑	Robbery	0	0	●
Disorderly Conduct	0	1	↓	Sex Offenses	0	0	●
Driving Under the Influence	4	3	↑	Sex Offenses, Nonforcible	0	0	●
Drug Equipment Violations	2	3	↓	Stolen Property Offenses	2	1	↑
Drug/Narcotic Violations	5	7	↓	Trespass of Real Property	1	0	↑
Drunkenness	0	0	●	Weapon Law Violations	1	2	↓
Embezzlement	0	0	●	CFS Status	Q2	3yr Avg	Up/Down
Extortion/Blackmail	0	0	●	Dispatched	122	171	↓
Family Offenses (Nonviolent)	0	1	↓	Initiated	236	350	↓
Fraud Offenses	8	6	↑	Unspecified	204	171	↑
Gambling Offenses	0	0	●	Total	562	691	↓

Note: Initiated CFS are defined by whether the created date and time listed in the CFS match the on scene date and time entered by dispatch. Additionally, follow up and assignment CFS types are included in this category. Dispatched CFS are defined by whether an on scene time is listed in the CFS, and the CFS is not initially defined as initiated. Unspecified CFS include CFS with no on scene date and time information.